

# scene

---

Sending off seven retiring faculty,  
page 4

---

President Loren Anderson talks  
about the future of higher education,  
page 7

---

Grad mixes environmentalism and  
fun with children's illustrations,  
page 16

---

## Celebrate!

### PLU Class of 2001



# scene

**EXECUTIVE EDITOR**

Greg Brewis

**AUTOR**

Drew Brown

**WRITERS**

Drew Brown, Katherine Hedland '88, Laura Gifford '00 and Greg Brewis

**GRAPHIC DESIGN**

Carolyn Reed Barritt

**PHOTOGRAPHER**

Chris Tumbusch

**CLASS NOTES**

Joni Niesz

**SPORTS**

Nick Dawson

**WEB EDITORS**

Drew Brown, Laura Gifford '00 and Kevin Freitas '02

**PLU OFFICERS**

Loren J. Anderson, *President*

Paul T. Menzel, *Provost*

David G. Aubrey, *Vice President, Development and University Relations*

Laura J. Polcyn '74, '79, *Vice President, Admissions and Enrollment Services*

Laura F. Majovski, *Vice President and Dean, Student Life*

Sheri J. Tenn, *Vice President, Finance and Operations*

**EDITORIAL OFFICES**

Hauge Administration Building, Room 207

Phone: 253-535-7430, Fax: 253-535-8331

Email: [scene@plu.edu](mailto:scene@plu.edu)

Website: [www.plu.edu/encore](http://www.plu.edu/encore)

**OFFICE OF ALUMNI AND PARENT RELATIONS**

Navig Alumni Center

Phone: 253-535-7415, 1-800-ALUM-PLU

Fax: 253-535-8555, Email: [alumni@plu.edu](mailto:alumni@plu.edu)

Website: [www.plu.edu/alum](http://www.plu.edu/alum)

**STAFF**

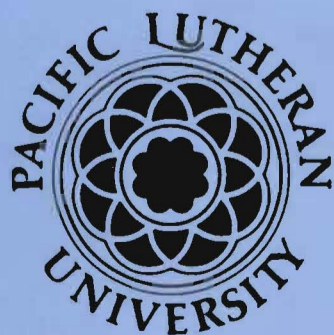
Scene (ISSN 0886-3369) is published quarterly by Pacific Lutheran University, S. 121st and Park Ave., Tacoma, WA 98447-0003. Periodicals postage paid at Tacoma, WA, and additional mailing offices. Address service requested. Postmaster: send changes to Development Data, Navig Alumni Center, PLU, Tacoma, WA 98447-0003.

**LETTERS TO THE EDITOR**

Your letters are welcome and should be addressed to Drew Brown, Editor, Scene, Pacific Lutheran University, Tacoma, WA 98447-0003, faxed to 253-535-8331, or emailed to [scene@plu.edu](mailto:scene@plu.edu). Letters may be edited for clarity and length.



*On the cover:*  
Graduates from the class of 2001, May 27.



# calendar

**CONCERTS**

**Jazz Under the Stars**

These Thursday evening concerts will be held in the Mary Baker Russell Amphitheater from 7 to 9 p.m. Jazz Under the Stars is sponsored by Starbucks Coffee, KPLU, the music department and Summer Sessions. Following each performance, the W.M. Keck Observatory will be open to concertgoers, and stargazing charts will be distributed. For more information, call 253-536-5116 or 1-877-254-7001.

July 12

**Seattle Women's Jazz Orchestra**

July 19

**Chuck Stentz, David Joyner, Wayne Bliss and Maria Joyner**

July 26

**Ryan Taylor Trio**

August 2

**Bill Ramsay**

August 9

**FWM**

August 16

**Jay Thomas**

**Other Concerts**

For more information, call 253-536-5116 or 1-877-254-7001.

July 27

**Final concert of Northwest High School Band Camp • 7 p.m.,**

Lagerquist—camp runs from July 22 to 27

**FRUIT FESTIVALS**

All festivals will be held in Red Square from 11:30 a.m. to 1 p.m. Dessert is free to the PLU community and \$2.50 for guests. For more information, call 253-535-7129.

July 25

**Raspberry Festival**

August 15

**Peach Festival**

**SCANDINAVIAN CULTURAL CENTER**

Public hours are 1 to 4 p.m. Sundays and 11 a.m. to 3 p.m. Tuesdays and Wednesdays. For more information, call 253-535-7332.

May 15 to November 12

**Caspersen Family Exhibit**

Exhibit focuses on one local Norwegian family that has continued to preserve and promote its heritage from generation to generation through music and art.

**OTHER EVENTS**

July 22 to August 11

**Summer Scholars at PLU**

Camp designed for talented students in grades four through 11—contact Summer Scholars at 253-535-8549 for more information, or visit the Summer Scholars Web site at [www.plu.edu/~sumschol](http://www.plu.edu/~sumschol).

**NOTE:** Not all events were scheduled at press time; check our website at [www.plu.edu/~newsinfo/calendars.html](http://www.plu.edu/~newsinfo/calendars.html) for updates.

Pacific Lutheran University School of Business  
Center for Executive Development

SERVING NORTHWEST BUSINESSES, GOVERNMENTS AND NON-PROFITS FOR OVER 25 YEARS THROUGH HIGH QUALITY SEMINARS, WORKSHOPS, CUSTOMIZED IN-COMPANY TRAINING, AND DEVELOPMENT ACTIVITIES.

The Center for Executive Development provides more than 2,000 days of training per year in a wide variety of subjects. Our programs serve business owners, supervisors, managers and executives without the time for long courses, and who enjoy unique interactive experiences.

**OUR UPCOMING SEMINARS ARE:**

**Understanding People Through Strengths**  
July 9-10, 2001  
Pacific Lutheran University

**Contract Writing**  
July 16-17, 2001  
Seattle Airport Marriott-SeaTac

**Operating Excellence**  
July 16-17, 2001  
Seattle Airport Marriott-SeaTac

**World Class Supply Chain Management**  
August 13-14, 2001  
Hilton Seattle Airport

**Electronic Commerce: Principles-Models-Strategies**  
September 17-18, 2001  
Pacific Lutheran University

[WWW.PLU.EDU/~EXECDEVE](http://WWW.PLU.EDU/~EXECDEVE) - [EXECDEVE@PLU.EDU](mailto:EXECDEVE@PLU.EDU) - 253-535-7330

*PLU Northwest & Scandinavian Gift Shop*

**Featuring:**

- "Backsplash" pottery by Julie Ueland, a PLU Alumni
- Big Sky Carvers
- Porsgrund China
- and many other Northwest and Scandinavian gifts

407 GARFIELD STREET  
TACOMA, WA 98444  
(253) 535-8397  
[luteworld@plu.edu](mailto:luteworld@plu.edu)



# KPLU JAZZ CRUISES

**Don't miss the Boat!**

The KPLU Summertime jazz & blues cruises sail Puget Sound on The Royal Argosy on Sundays, from 10:30 a.m. to 1:00 p.m.

Call KPLU 1-800-677-5758 Monday through Friday 8 a.m. to 5 p.m.

Guaranteed seating for each cruise is \$45 per ticket and is available only from KPLU.

Check in & boarding begin at 9:00 a.m., the day of the cruise, from Pier 56. Directions are available at [www.kplu.org](http://www.kplu.org)

JUNE 24  
PEARL DJANGO

JULY 8  
DUFFY BISHOP

JULY 22  
CONNIE EVINGSON

AUGUST 5  
LANCE BULLER WITH  
STEPHANIE PORTER

AUGUST 19  
KORLA WYGLE

SEPTEMBER 2  
DAN HECK AND STEVE KORN

SEPTEMBER 16  
LILY WILDE

SEPTEMBER 30  
JIM FERGUSON

# in the news

## 2001 Commencement highlighted by Lois Capps '59

U.S. Rep. Lois Capps '59 of Santa Barbara, Calif., received an honorary doctorate of humane letters, and 605 PLU graduates earned their degrees at Spring Commencement May 27. At this year's ceremony, PLU awarded 570 undergraduate degrees and 35 graduate degrees. PLU awards about 900 undergraduate and graduate degrees every year.

Capps was the honored speaker. She was elected in 1998 to succeed her husband, Walter, in the seat representing California's central coast after his death.

She earned her nursing degree from PLU, her master of arts in religion from Yale University and a master's in education from the University of California at Santa Barbara.

Capps is co-chair of the House Democratic Task Force on Medicare Reform and founder and co-chair of the bipartisan Congressional School Health and Safety Caucus, which educates House members and staff on important issues such as playground safety, school sports safety and nutrition in schools.

Also honored at commencement were retiring faculty members Stewart Govig, religion; Jerry Kracht, music; Jerome LeJeune, psychology; Jon Nordby, philosophy; Linda Olson, nursing and Paul Webster, languages and literature.



**TO READ LOIS CAPPS'S COMMENCEMENT SPEECH, GO TO [www.plu.edu/encore](http://www.plu.edu/encore).**

## Author, award winner to give Kohler Lecture

An award winning authority on the sociology of religion, Robert N. Bellah, will deliver the Kohler Lecture, Sept. 25, at 7:30 p.m. on campus.

Bellah's scholarship, ranging from American civic history and responsibility to East Asian religions, has affected trends, methods and current research in the academic study of religion.

Last year President Clinton awarded Bellah the National Humanities Award. The award honors individuals or groups whose work has deepened the nation's understanding of the humanities.

Bellah's best-selling 1985 book, "Habits of the Heart: Individualism and Commitment in American Life" won the Los Angeles Times Book Prize. It examines the tension in contemporary American life between radical individualism and the deep yearning for community.

Bellah is Elliott Professor of Sociology, Emeritus at the University of California at Berkeley.

## PLU becomes ROTC host institution

PLU will become a host institution for its award-winning Army Reserve Officers' Training Corps.

The move will establish a military science program at PLU and will provide cadets more scholarships and better Army assignments when they graduate. Currently PLU's ROTC program is affiliated with the parent program at Seattle University, even though PLU has 125 cadets, compared to Seattle University's 75.

The move to host status was controversial on campus because of the military's "don't ask/don't tell" policy. Gay and lesbian individuals are banned from military service, unless they keep their sexual orientation secret.

PLU has a non-discrimination policy that promotes inclusiveness for sexual minorities. Some faculty members and students opposed creating a department on campus that conflicts with this policy.

A majority of faculty members voted to approve the host status, and the Board of Regents followed their recommendation.

## PLU alum to take over choral activities and the Choir of the West

Master conductor, inspirational teacher and exceptional soloist Kathryn Lehmann Olson has been named conductor of the Choir of the West and new director of choral activities.

Olson, a 1976 PLU music education graduate who was a member of the Choir of the West, is the fifth person to hold the position and the first woman. She is the first woman to conduct a major choir at a Lutheran college. She will succeed Richard Sparks, who is leaving PLU after 18 years to work more closely with the professional choirs he conducts.

"Kathryn brings incredible energy," said Professor David Robbins, chairman of the music department. "She is not only a superb choral conductor, she is deeply committed to music education, and she's a performer of professional caliber, with an insider's knowledge of the physics and psyche of singing."

Olson most recently was an associate professor of music at the University of Oregon and conductor of the University Chamber Choir. She also has held positions at Oregon State University, Westminster Conservatory in Princeton, N.J., and in the Clover Park School District. She regularly performs, acts as a guest conductor and lectures on vocal performance. She earned her master's degree in vocal performance from Westminster Choir College in Princeton, N.J., and is pursuing her doctorate in musical arts at the University of Colorado, Boulder.

Olson is dedicated to preparing students to teach music in public schools and has an ability to work with voices that are just forming and those of more mature, well-developed singers, Robbins said.



She looks forward to returning to campus: "I have extremely good memories of how I was treated as a student at PLU," Olson said. "Since I've been a teacher, I haven't found that kind of atmosphere, where students are the priority and are so valued."

She said she is honored to conduct the choir in which she performed under Maurice Skones. She hopes to continue the traditions he and Sparks have maintained, as well as try some new things, such as introducing the choir to more ethnic and European music.

Olson will join PLU as an associate professor in the fall. The Choir of the West celebrates its 75th anniversary this year. Sparks will take the choir on a tour of Scandinavia in May and June, and a reunion concert with past members will take place at 2 p.m. Sunday, Oct. 14, at Lagerquist Concert Hall.

## Online...instead of in line

One of the longest standing and most aggravating student traditions—waiting at the bookstore to purchase textbooks—could be a thing of the past. Soon, the tradition will become a short stroll to a computer, as the PLU Bookstore makes online ordering available. Not only will students be able to purchase books online, but alumni, parents and other shoppers can order sweatshirts, CDs and other merchandise.

It will all be done through Luteworld, the PLU Bookstore's new Internet venture, scheduled to launch Aug. 1. Find it at [luteworld.plu.edu](http://luteworld.plu.edu).

"We're replicating most of the store online, and in some ways, we're going to expand the store," said Mark Mulder, BBA '93, MBA '00 director of Auxiliary Services.

The electronic store will reduce crowds in the bookstore and make items available to a much broader audience.

Students will be able to order books for their classes and have them delivered or ready for pickup. The Lutes Team Store will offer athletic wear and PLU clothing, and the "Uniquely PLU!" section hopes to showcase authors, artists and musicians with ties to PLU. Luteworld also will offer a New Lutes Center, with information for incoming students about how to find the right books, how to order a computer and other tips. Future plans include selling tickets to campus events online.

PLU MBA and marketing students helped the bookstore prepare to enter the world of e-commerce.

"These are things that have been researched by and for our students," Mulder said. "We surveyed our students and they even picked the name."

Items will be offered at the same price as in the store, and as with most online services, there will be shipping charges for delivered items. Gift-wrapping will be available.

"It is a huge service improvement," Mulder said. "And when you buy from Luteworld, all the money stays on campus. We give every dollar we make back to the university."



Continued on page 4

# encore!

## Encore! off and running

Thanks to all of you who have visited our new online supplement to Scene, Encore! ([www.plu.edu/encore](http://www.plu.edu/encore)). In this edition, we introduce a new design as well as expanded content. As some who have visited already know, you can find exclusive Web-only articles, links to various PLU Websites and information related to the articles you are reading in this edition. Keep your comments coming to [encore@plu.edu](mailto:encore@plu.edu). They have been extremely helpful in making Encore! a great site.

Along with many supplements to Scene stories, you will find these Encore! features:

### NAICU president discusses changing face of higher education

Higher education in the next 10 years faces challenges in the next 10 years exceeding any since the late 1940s, according to David Warren, president of the National Association of Colleges and Universities, who recently visited PLU. Only colleges that are prepared to meet the expectations of these students—from the food they eat, to the racial mix of the faculty and staff and the involvement of institutions in the community—will succeed in attracting and retaining these students.

### Student filmmakers make movies, spark PLU Film Society

While other students are trying to figure out what they want to do for a career, Ben Dobyns '02 is trying to figure out how to finance his next film. Dobyns, along with screenwriter/actor Matt Vancil '01, have created two back-to-back comic horror films, a PLU Film Society and their own production company, Dead Gentlemen Productions.

### Robot Building

His name is Morris, and he hopes to be a fully operational robot. See how a group of computer science and computer engineering majors, as a part of their Senior Capstone Project, built a robot using the Lego® Mindstorms™ Robotic Invention System.

### Dealing with a bearish market

Higher-education officials and experts around the country say fund raising has slowed in the past few months, as the major stock markets have looked more and more bearish. When the Chronicle of Higher Education investigated the situation, they went to PLU President Loren J. Anderson, among others. Kit Lively's special report investigates how President Anderson is planning instead of panicking.

### Q Club Banquet Photo Essay

Q Club held another successful spring banquet this May. This issue's photo essay, by Chris Tumbusch, consists of this year's highlights. You will also find associate provost Bill Teska's speech on the PLU study abroad experience and Mooring Mast coverage of the event.

## School of Education dedicates technology classroom

Education students have access to cutting-edge technology thanks to a generous gift from an alum in honor of two retired faculty members, including her grandfather.

Diana Pederson '86 contributed the funds to equip a classroom in the Administration Building. She made the donation to honor her grandfather, Arne Pederson, and Dr. Lynn Stein. Both taught at PLU for nearly 30 years before retiring in the late '80s.

"Long before care and service became core values of the School of Education, these gentlemen embodied those values," Associate Dean Dr. Myra Baughman said at the dedication of the Pederson-Stein Technology Enhanced Classroom.

In use since last fall, the room was formally dedicated in April. Equipped with computers, digital cameras, a video camera and other computer equipment, the TEC enables students to put together digital reports and develop innovative programs for use in the classroom.

President Loren J. Anderson thanked both retired teachers for their years of service to the university and Diana Pederson, who earned degrees in Norwegian and computer science and works for Microsoft.

"Today we also celebrate the accomplishments of one of our very young and successful graduates," he said.



**DR. LYNN STEIN CUTS THE RIBBON AT THE CLASSROOM DEDICATION.** (FROM THE LEFT) School of Education Dean Lynn Beck, Diana Pederson '86 behind Stein, Mr. Arne Pederson and David Aubrey, Vice President of Development and University Relations.

## Student Satisfaction Survey shows PLU's continued excellence

Students ranked PLU high in most components of campus life, academics and services on the USA Group Noel-Levitz Student Satisfaction Inventory, administered last October to a randomly selected group of 46 undergraduate classes. The survey is a national poll, taken by more than 300,000 students attending four-year private colleges.

The university has conducted the SSI for several years, and plans to continue using it on a biannual basis for monitoring student feelings and opinions.

"Student feedback is important to us," said Laura Majovski, vice president and dean for student life. The SSI is widely distributed on campus and is used in planning university initiatives, she said.

PLU ranked above the national mean in the areas of campus climate, campus life, campus support services, concern for the individual, instructional effective-

ness, recruitment and financial aid, service excellence and "student centeredness." It scored at the national mean in the area of registration effectiveness and scored below the national mean in academic advising, responsiveness to diverse populations and safety and security.

The registration effectiveness and recruitment and financial aid rankings both represent marked improvements over previous years—indicating that university officials have taken the SSI seriously.

"We've gotten better over time, and we've continued to excel where we are good," Majovski said, mentioning that the four factors students rate most highly in affecting their decisions to come to PLU—academic reputation, financial aid, size and cost—have remained stable throughout several years of survey results.

When asked how their college experiences have met their expectations, how satisfied they are overall with their experience so far, and whether they would enroll at PLU again, PLU students consistently rank the university significantly higher than the national mean. Ninety-two percent of students polled last October plan to graduate from PLU, and for 73 percent of them, PLU was a first choice.

## Students elect Vialpando, Holmes to hold ASPLU executive posts

New executive leaders of ASPLU for 2001-2002 were elected this spring. Junior Tim Vialpando, an English education major from Westminster, Colo. was elected president by a small margin over junior Sean Howell. Senior Cole Holmes, a communication and political science major from Lacey, Wash. won the vice presidential race over junior Tommy Gunston.



**Tim Vialpando**

Vialpando has served in a variety of student government positions, including Foss Hall president and ASPLU programs director. Holmes has also held a number of leadership roles, including Pflueger Hall president and Residence Hall Association president.



**Cole Holmes**

Better communication between ASPLU and the student body is a priority of the new officers. "I think one of my greatest strengths is the fact that I am so approachable," Vialpando told the *Mooring Mast*. "Students can come to me any time and share ideas or concerns that they may have."

The new executives also have plans to rework the ASPLU budget, increase free programming on campus and increase communication between students and administrators.

Vialpando and Holmes took office April 1 and will serve through March 2002.

## 2001 Faculty Retirees

### Stewart D. Govig

*Professor of Religion*

- At PLU from 1958 to 1960, 1961 to present
- Bachelor of Arts in History, St. Olaf College, 1948
- Master of Divinity, Luther Theological Seminary, 1952
- Master of Theology in Biblical Studies, Princeton Theological Seminary, 1954
- Ph.D. in Religious Education, New York University, 1966



### Jerry Krocht

*Professor of Music*

- At PLU from 1967 to 1968, 1969 to present
- Bachelor of Music, University of Iowa, 1963
- Master of Arts in Clarinet Performance, University of Iowa, 1965
- Master of Fine Arts in Orchestral Conducting, University of Iowa, 1967
- Doctorate of Musical Arts in Orchestral Conducting, University of Iowa, 1974



### Jerome P. LeJeune

*Associate Professor of Psychology*

- At PLU since 1972
- Bachelor of Arts in Classics, Gonzaga University, 1964
- Master of Arts in Psychology, University of Victoria, 1970
- Ph.D. in Psychology, University of Victoria, 1974



### Jon J. Nordby

*Associate Professor of Philosophy*

- At PLU since 1977
- Bachelor of Science in Philosophy and Art, St. Olaf College, 1970
- Master of Arts in Philosophy, University of Massachusetts, 1975
- Ph.D. in Philosophy, University of Massachusetts, 1977



### Linda N. Olson

*Professor of Nursing*

- At PLU since 1967
- Bachelor of Science in Nursing, University of Washington, 1959
- Master of Nursing, University of Washington, 1964
- Ph.D. in Education, University of Washington, 1986



### Alexander Szabo

*Assistant Professor of Social Work*

- At PLU since 1994
- Bachelor of Arts in Psychology and Philosophy, St. John's University, 1963
- Master of Social Work, Hunter College, City University of New York, 1968
- Master of Education, Columbia University Teachers' College, 1989
- Doctorate in Education, Columbia University Teachers' College, 1990



### Paul M. Webster

*Associate Professor of German*

- At PLU since 1969
- Bachelor of Arts in German, University of California at Los Angeles, 1964
- Master of Arts in German, University of California at Los Angeles, 1967



## PUBLISHED CORNER

**LYNN BECK**, professor and dean of the School of Education, co-authored a book titled "The Productive High School: Creating Personalized Learning Communities" (Corwin Press, 2001). Her co-authors included Joseph Murphy, Marilyn Crawford, Amy Hodges and Choris McGaughey. The book provides a historical overview of the development of the modern, comprehensive high school, and makes recommendations for improvement of the current system.

**MEGAN BENTON**, associate professor of English, co-edited a book titled "Illuminating Letters: Typography and Literary Interpretation" (University of Massachusetts Press, 2001) with Paul C. Gutjahr. The book is a collection of essays that examine the role of book design in shaping the meanings that readers derive from printed texts. Her own essay included in the volume is titled "Re-Masculating the Modern Book: Typography and Gender."



## FACULTY NEWSMAKERS

### Hacker awarded presidential citation

**COLLEEN HACKER**, Ph.D., PLU professor and assistant dean in the Department of Physical Education, was one of two members of the Washington State Psychological Association to receive presidential citations from the American Psychological Association. The award was presented by APA President Pat DeLeon at an awards dinner earlier this year.

The APA cited Hacker's approach to mental skills training from a practical, application-oriented perspective, and noted "Colleen's commitment to the diversity between and among team members, team chemistry and dynamics in concert with the coaching staff."

### History professor's innovative curriculum receives national notice

History professor **BETH KRAIG'S** innovative teaching methods are receiving national notice. Kraig's 20<sup>th</sup> Century U.S. History course, profiled in the Spring 2001 issue of Scene, was the focus of a March 2 column in The Chronicle of Higher Education.

The Chronicle, a national trade journal, devoted its weekly "Syllabus" column to a discussion of Kraig's plan for using service learning to make historical connections. Kraig will teach the course each fall.



**TO READ THE CHRONICLE ARTICLE, GO TO**  
[www.plu.edu/encore](http://www.plu.edu/encore).

# campus features

## Center for Learning and Technology brings PLU's future into focus

BY LAURA GIFFORD '00

The Center for Learning and Technology, the new facility that could be under construction as early as mid-2002, will continue to develop PLU's role as a trendsetter.

According to President Loren Anderson, there has been a clear need for a facility "that could advance the integration of new technology in teaching while helping to sustain the university's liberal arts focus."

The university will answer this need by providing a new home for the School of Business and the departments of mathematics, computer science and computer engineering. The new building will also house a variety of campus offices, including the dean of the Division of Natural Sciences, the Center for Executive Development and the Tacoma/Pierce County Mathematics, Engineering & Science Achievement Program (MESA).

Anderson and the planning committee see the structure promoting interdisciplinary activity.

"Graduates who attended our PLU 2010 sessions spoke of the excellent business education they received, but expressed regret that their education was not more oriented to the use and understanding of new technologies," Anderson said. "Those with degrees in computer fields said a better foundation in society-focused areas of the curriculum, such as business, would have helped them."

With the improved facilities that The Center for Learning and Technology provides, faculty members plan to foster this type of curricular interaction. The current M.B.A. program in Technology and Innovation Management will be mined for material helpful to undergraduates; programs drawing on the theoretical capacity of mathematics, the modeling capacity of computer science and the strategic dimensions of business are also planned for the future.

The Board of Regents approved The Center for

Learning and Technology concept at its January 2001 meeting, and now planners are refining issues of scope and budget. David Aubrey, vice president for development and university relations, said Regents authorized development of construction drawings last

month. Pending fund raising progress and approval by the Board at its spring 2002 meeting, construction is projected to begin in May 2002, with the building open for classes in September 2003.

The project budget is approximately \$18 million, and Aubrey said already \$6 million in gifts and commitments had been secured.

The Office of Development hopes to complete funding by the end of the 2001-2002 academic year. "In addition to counting on the support of all friends and alumni, we specifically are encouraging graduates of our School of Business, department of computer science and computer engineering, and department of mathematics to contribute," Aubrey said, "as well as graduates working elsewhere in the technology sector."

The Center for Learning and Technology is the second major project of three outlined in the Campaign for PLU: The Next Bold Step, which passed the \$83 million mark in May, en route to its \$100 million goal. The renovation of Xavier Hall will be complete this summer, with social sciences faculty scheduled to move back in August. A rededication of Xavier is planned for Homecoming weekend. Eastvold Auditorium is also scheduled for restoration as part of the Campaign.



**A LOOK INTO THE FUTURE:** This computer-generated model shows what the Center for Learning and Technology will look like from the front. The building will be constructed just west of Rieke Science Center.

**FOR MORE ON THE CENTER FOR LEARNING AND TECHNOLOGY, INCLUDING A 3-D VIRTUAL TOUR, VISIT [www.plu.edu/encore](http://www.plu.edu/encore).**

## Rainbow of Gifts nurtures a new generation of leaders

BY LAURA GIFFORD '00

Lutheran youth from throughout Region I of the Evangelical Lutheran Church in America will converge on campus July 29 to August 2 for a week of fellowship, multicultural events and activities and leadership training known as Rainbow of Gifts.

While the event might sound similar to many sponsored by various Northwest synods throughout the year, this program differs in one important—and groundbreaking—respect: the majority of the conference's participants are youth of color.

University Pastor Dennis Sepper and Registrar Julia Pomerenk '83 have joined Dave Ellingson of the ELCA Region I office in coordinating the annual event, which enters its fourth year in 2001.

Rainbow of Gifts is unique to Region I of the ELCA, and grew out of conversations about how to develop more minority leaders within the Lutheran church. About 100 participants, ranging in age from junior high to young adulthood are participating in the program.

"There are so few minority leaders within the church that we tend to burn them out," Sepper said. "We realized our particular synod, because of Alaska, a high Native American population and a high Hispanic population, has a lot of these underrepresented people. Then we asked ourselves,

"Why don't we start a youth leadership program for these students?"

The resulting program, he said, gives students the opportunity to be in the majority, many for the first time in their lives. It also gives PLU and Trinity Lutheran College in Issaquah, Wash., the opportunity to connect with bright, talented young people.

Two Rainbow of Gifts students enrolled at Trinity Lutheran College last fall, Sepper said, and he hopes PLU will also attract Rainbow graduates.

"It's fun to be in a room on the PLU campus where most of the faces are people of color," said Pomerenk, who became involved with the program last summer.

Participants in the program live together in Tingelstad Hall and participate in a variety of activities. Students of different ethnicities share their heritage through dance, crafts and music, and the program brings in a variety of speakers. Last year, students took part in a service project on the Nisqually Reservation.

Rainbow of Gifts also includes daily worship services and a concluding service at the end of the week when participants join students from three other church-related camps running simultaneously during the week at PLU.

Both St. Olaf College and Texas Lutheran University have expressed interest in the Rainbow of Gifts program, raising hopes that the program may expand in the future.

For more information or to participate in Rainbow of Gifts 2001, call the Region I ELCA office, 1-800-755-5831 or 206-624-0093.



**TRADITIONS TAKE CENTER STAGE:** Native American students demonstrate a traditional dance during the annual Rainbow of Gifts conference. Participants from a variety of ethnic backgrounds have the opportunity to share their heritage during the weeklong event.



IN THE LAB: Alayne Brown '03 and Dr. Stacia Rink (Chemistry) work with radiolabeled DNA behind a shield.

## Endowment now supports Natural Sciences undergraduate research program

BY ANITA WAHLER

While science can appear to be just facts and figures, its essence is profound curiosity about the natural world. Students in the Natural Sciences Undergraduate Research (UR) Program have a chance each summer to make the connection between what they learn from textbooks and their innate curiosity. Working one-on-one with faculty on research projects in the lab and field and at the computer, students find out firsthand how to formulate an important question. They also place it in the context of other work, devise experiments and equipment to test predictions, and determine the significance of results.

Research experience helps students become independent problem solvers and compete more effectively for scholarships, jobs, and acceptance into graduate programs. Faculty mentors receive concrete assistance in their research, and have the satisfaction of seeing students grow in competence, confidence, and sophistication. While student discovery is the critical element in the program, their collaboration with professors is also key.

"Modern science calls for collaboration," states Dean of Natural Sciences and UR Program Director Dr. Chang-li Yiu. "Skills in written and oral communication are both important components in training a scientist."

These skills are practiced when the 10 students and five faculty funded this summer through the division's second three-year grant from the M.J. Murdock Charitable Trust and PLU matching funds (along with those with other funding) meet weekly to talk about their projects. At the end of the summer the students prepare a report, give formal presentations at PLU, and present a poster or talk at the annual regional UR conference sponsored by the Trust.

"I believe in this program," says sophomore Alayne Brown, who did a project in plant molecular biology with Professor Mary Ellard-Ivey last summer, and is currently doing research on DNA mutations with Professor Stacia Rink. "It helps you in classes, and teaches you a different way of thinking."

PLU is in the process of establishing an endowment fund to support faculty-student natural sciences undergraduate research in response to a challenge grant from the M.J. Murdock Charitable Trust. Under the terms of this challenge, PLU's Office of Development has raised \$330,000 in gifts and pledges, and the Trust has made a partial award of \$130,000. To secure additional funding from the Trust, PLU must raise \$270,000 by March 2002. An endowment of \$1.5 to \$2 million is planned to fully support the program.

## PLU mourns sudden loss of James Holloway

Dr. James Dale Holloway, 40, an assistant professor of music at PLU and university organist, was shot to death on campus May 17 by a man who wanted to kill an innocent person. That such a gentle man could be the victim of such senseless violence has added to the grief of the many whose lives he touched with his teaching and his music.

When Holloway played the organ, you could hear his passion, feel his faith. His music was his worship, his inspiration, his celebration—and it is now his legacy.

But his family, colleagues, students and church friends find some solace in the gifts he left behind: the music he recorded, the songs he wrote and lessons he taught. He was a renowned performer and eloquent speaker who had won many prestigious competitions.

"Jim was not simply gifted, he was a gift," President Loren J. Anderson said. "When he played, we all sensed that the music came not from his hands or his head, but from his heart."

Holloway was born July 4, 1960, in Columbus, Ga. He earned a degree in music from Shorter College in Rome, Ga., and his master's degree from the University of North Texas. He completed his doctorate at the University of Washington.

Holloway joined PLU as a part-time instructor in 1990, when he was minister of music at Trinity Lutheran Church, and filled in during several sabbatical leaves. An enthusiastic and dedicated teacher, he was named university organist and full-time professor last fall after a national search. He reinvigorated the chapel choir, motivated students and was always looking for ways to involve more people.

Survivors include his wife, Judith Carr, dean of special academic programs at PLU, and her five children, Ben, Mark and Lauren Carr, Dulane Moran and Alexis Ashworth, and one grandson. To mark his contributions and encourage other music students, his family established the James Holloway Music Scholarship Fund at PLU.

To find out more about the James Holloway Music Scholarship Fund, and to read the address from the memorial, go to: [www.plu.edu/encore](http://www.plu.edu/encore).



James Holloway

## An impact beyond PLU: President Anderson discusses the future of higher education

**C**ollege population growth. Tuition. The economy. The relationship with the community. The dilemmas Loren J. Anderson faces as a university president are not exclusive to PLU, and he knows it. In the middle of a one-year term as chairman of the board for the National Association of Independent Colleges and Universities, Anderson is primed to make an impact that stretches to academic institutions across the country. In that role, he has been actively lobbying national lawmakers and serving as spokesman for the nation's 950 independent colleges and universities. Last month Anderson spoke with Scene about some of the key issues in higher education.

**SCENE:** Demographers predict a 20 percent increase in the nation's college-age population over the next 10 years, with more high school students than ever applying to college. What effect will this have on these students? Will it be more difficult to gain admission to good colleges and universities? What should students in the 9th or 10th grade be doing now to prepare?

**ANDERSON:** Students over the next 10 years will find ample places to go and rich opportunities for study. Higher education as an industry is overbuilt today and has the capacity to serve more people than we are currently serving.

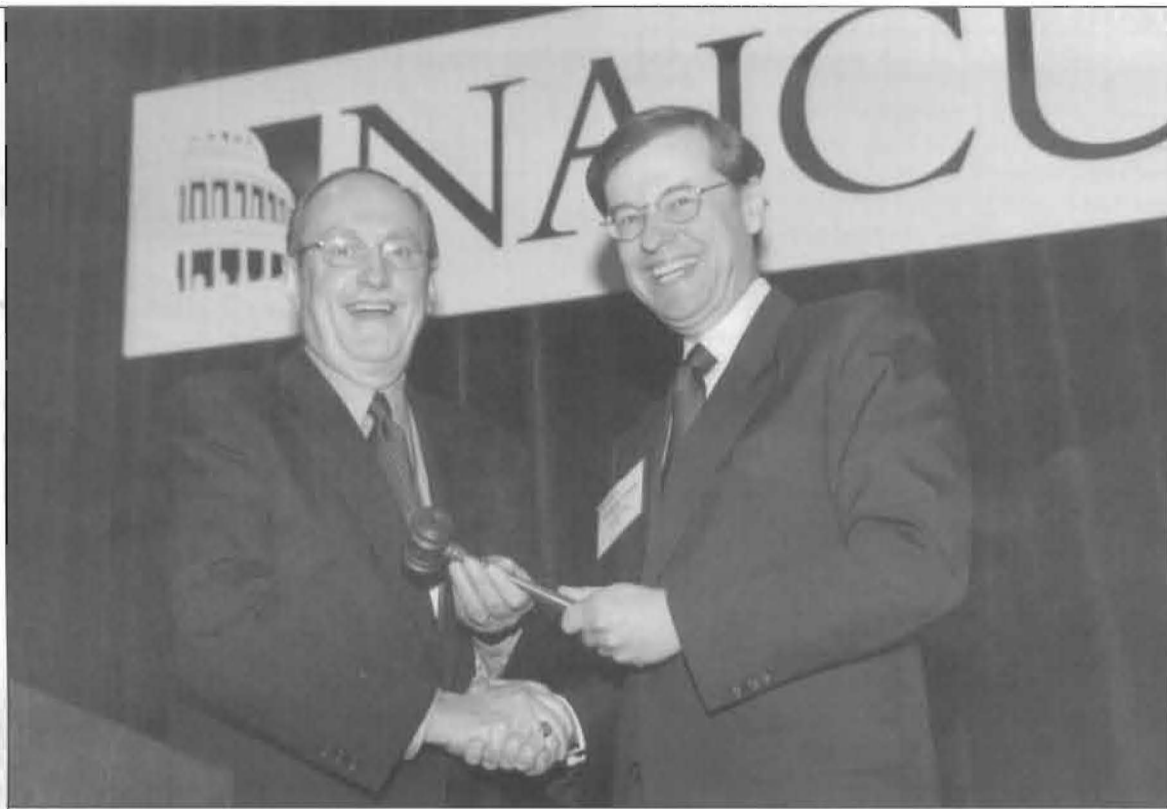
The admissions sorting out process among institutions is a complex one. There are certain institutions for which the demand will be even greater. But there are many institutions that will continue to work hard to attract top quality students. Students of good ability will have ample opportunity for choice.

Students considering college should be preparing themselves in the basic skill areas with the broadest possible curriculum through the high school years—demonstrating that they have learned, and more importantly learned how to learn.

**SCENE:** Are independent colleges and universities affordable for the average family? We hear a lot about tuition outpacing the consumer price index. Why is that? Do many students receive financial aid?

**ANDERSON:** The financing of higher education is a major issue for families. It's true at both public and independent institutions. If you look at the national statistics, the average family incomes of students attending independent colleges are modest. Nevertheless, independent colleges and universities are more affordable than ever. Indeed, financial aid is available to 80 to 90 percent to students at a given institution—funded by the institution, by the state and by the federal government.

Yes, tuition increases have, over the long term, run 1 or 2 percent above the consumer price index—in part due to the combination of costs faced by higher education. For example, right now we are facing energy costs, fringe benefit costs and technology costs that are all moving at a pace significantly above the consumer price index and all are a significantly larger percentage of institutional budgets than they are of the CPI formula.



**PASSING THE GAVEL:** At NAICU's 25th Annual Meeting in Washington, D.C., outgoing NAICU Board Chair William Trout, President of Rhodes College (right), hands the gavel to PLU President Loren Anderson.

**SCENE:** The stock market boomed and then crashed over the past year. What has this meant for college and university endowment funds? Has support from donors been affected?

**ANDERSON:** Colleges and universities like individuals enjoyed incredible investment experiences in the '90s. The result was huge increases—particularly for the largest endowment funds—and significant increases for all endowment funds.

FOR PACIFIC LUTHERAN UNIVERSITY THE MATTER OF REACHING OUT TO THE BROADER COMMUNITY COMES QUITE NATURALLY. IT FLOWS FROM OUR MISSION AS A LUTHERAN INSTITUTION AND OUR EDUCATIONAL PHILOSOPHY AS A NEW AMERICAN COLLEGE.

—PRESIDENT LOREN J. ANDERSON

At PLU between 1995 and 1999 we averaged 19.5 percent compounded annually on our endowment—just a tremendous track record. In the year 2000, we returned 4.6 percent. This year that experience is even less positive, and that is typical of schools across the country. It hasn't meant an immediate reduction in endowment income but clearly over time it means less income from the endowment to help with operations.

The stock market downturn has also meant that donors are naturally cautious and in many cases are simply deferring decisions to support higher education institutions. This has been true here at PLU and across the country.

**SCENE:** PLU seems to have built a strong relationship with Tacoma and the Pierce County community. Is that something that the university has deliberately encouraged? Why? Do most colleges and universities make that commitment?

**ANDERSON:** For Pacific Lutheran University the matter of reaching out to the broader community comes quite naturally. It flows from our mission as a Lutheran institution and our educational philosophy as a New American College. Our notion of education, taken from Dewey, is that the best learning is both theoretical and applied. Our Lutheran theology of education says that we are ultimately responsible to lend a hand and to make the world a better place. So both our educational and our theological impulse says we need to be an active, contributing, and positive member of our surrounding community.

**SCENE:** What other issues central to independent colleges and universities have you been addressing?

**ANDERSON:** We have been struck by the public's lack of understanding of the difference between public and independent higher education. Several recent national surveys show that people really don't perceive a significant difference between public and private higher education. They don't perceive the difference in terms of quality of instruction, personal interaction, opportunities for mentorship—all characteristics of the independent sector and not of the public sector.

So, one of the emerging issues for NAICU and other national affiliations of independent colleges and universities is to try to figure out how we do a better job of communicating that message.

TO LEARN MORE ABOUT NAICU, GO TO [www.plu.edu/encore](http://www.plu.edu/encore).

# leadership and service

## Jeff Rippey '78 reconnects to PLU through the Board of Regents

BY GREG BREWIS

PLU's well-deserved reputation as a warm and friendly place probably began well before Jeff Rippey '78 arrived on campus. But if you had to choose the personification of that PLU spirit, you'd be hard pressed to find a better choice than Rippey.

A member of the Board of Regents and the Alumni Board for almost two years, Rippey is a highly successful financial management expert. He is also the most upbeat, super-charged, positive personality around.

"When I arrived on campus for the first time I didn't know anything about PLU. I gave myself a self-guided tour and I couldn't believe it. I said 'Wow! This place is beautiful.' Within days I had checked it out with family and friends and made PLU my number one college choice," Rippey said.

"I didn't know a single person on campus when I started out as a freshman, but before long had many great friends who continue to be friends today." Rippey considers his time at PLU a major turning point in his life.

"I had a very good experience at PLU. The people I met here, the activities I was involved in, and even my academic work helped me grow spiritually," Rippey said. He didn't grow up attending church much—his interest in Christianity began only a year to two before he came to PLU.

Baptized at Trinity Lutheran Church as a junior, Rippey lived for several years with the Trinity pastor and seriously considered entering the clergy himself.

"Eventually I decided that instead of pursuing an interest in the ministry, I would concentrate on my skills in economics and finance," Rippey said. "I found myself—and my life's work—at PLU."

IT IS SUCH A GOOD FEELING AND UPLIFTING EXPERIENCE FOR ME TO BE BACK. PLU IS A SPECIAL PLACE. IT'S GREAT TO SEE HOW NICE AND FRIENDLY THIS CAMPUS AND THE STUDENTS STILL ARE.

—JEFF RIPPEY

Rippey worked part-time at Rainier Bank in Seattle in the trust department during his senior year evaluating financial statements of closely held companies. After graduation, he stayed with Rainier for three years.

He then returned to his hometown, Portland, Ore., and went to work for Columbia Management Company. Rippey has now been there for almost 20 years.

He eventually became a shareholder in the company. When it was

sold three years ago to Fleet Bank of Boston, he stayed on and managed one of the most successful high-yield investment funds in the nation.

"Except for being a Q Club member I didn't have much contact with PLU after I graduated," Rippey said. "The school was always in my mind, I just never reconnected." It was when President Loren Anderson and Alumni Director Lauralee Hagen asked if Rippey would serve on the Alumni Board, and as one of three Alumni Board representatives to the Board of Regents, that the reconnection was sparked.

"When I attended my first regents' meeting it probably had been 20 years since I had been on campus," Rippey said. "Here I am again, walking on campus thinking what a beautiful place this is—but this time I'm wearing a suit and a tie and carrying a briefcase. If it weren't for the gray hair I'm sure I could just walk right into class, sit down and fit right in."

Rippey has fit right into his new volunteer activities. He serves on the executive committee of the Alumni Board and on the Board of Regents' finance committee, where he helps with the management of the university's endowment investments.

"It has been personally rewarding for me to get to know the people on the Board of Regents, especially those



Jeff Rippey

who serve on the finance committee," Rippey said.

"Most students, faculty and alumni have no idea how much knowledge and expertise the high powered, talented people who volunteer as regents bring to help guide the university.

"I've learned a lot from them and feel fortunate to have a chance to donate my time back to the school to help them keep that special PLU spirit alive. It is such a good feeling and uplifting experience for me to be back. PLU is a special place. It's great to see how nice and friendly this campus and the students still are."

Some nice guys, like Jeff Rippey, finish first.

### BOARD OF REGENTS 2000-2001

Initial appt, Name, Location, Representing

#### 1998-2001 TERM

- 1995 Mr. Daniel L. Alsaker, Spokane, Wash., ELCA
- 1996 Ms. Becky Burad, San Francisco, Calif., Alumni
- 2000 Ms. Roberta Goodnow, Bellevue, Wash., At-Large
- 1995 Mr. Ken Hartvigson Jr., Seattle, Wash., ELCA
- 1998 Mrs. Kathleen Jacobson, Bend, Ore., ELCA
- 1998 Ms. Katherine Johnson, Shoreline, Wash., ELCA
- 1995 Dr. Mark Knudson, Shoreview, Minn., At-Large
- 1995 Mr. William W. Krippaehne, Jr., Seattle, Wash., ELCA
- 1995 Mr. Gary Severson, Kirkland, Wash., At-Large
- 1995 Rev. Rebecca Lucky Shjerven, Gig Harbor, Wash., ELCA
- 1972 Bishop David Wold, Tacoma, Wash., Bishop ELCA

#### 1999-2002 TERM

- 1996 Mr. Neal L. Arntson, Portland, Ore., ELCA
- 1996 Mr. Richard L. (Dick) Bauer, Boise, Idaho, ELCA

- 1993 Mrs. Linda M. Evanson, Steilacoom, Wash., ELCA
- 1996 Ms. Anne Hafer, Wheaton, Ill., At-Large
- 1993 Mr. James Hushagen, Tacoma, Wash., ELCA
- 1995 Mr. Kurtis K. Mayer, Tacoma, Wash., At-Large
- 1999 Mr. Donald Morken, Bellevue, Wash., At-Large
- 1992 Bishop Mark Ramseth, Billings, Mont., Bishop ELCA
- 1999 Mr. Jeffrey Rippey, Portland, Ore., Alumni
- 1996 Rev. John L. Vaswig, Edgewood, Wash., ELCA
- 1996 Rev. Dean Wigstrom, Silverton, Ore., ELCA

#### 2000-2003 TERM

- 1997 Dr. Cynthia Edwards, University Place, Wash., ELCA
- 1998 Dr. William Foegen, Atlanta, Ga., At-Large
- 1997 Mr. Roe Hatlen, Apple Valley, Minn., At-Large
- 2000 Mrs. Anne Long, Bellevue, Wash., ELCA

- 1995 Rev. Dr. Larry Neeb, Fenton, Mo., At-Large
- 2000 Mrs. Karen Phillips, Mercer Island, Wash., ELCA
- 1997 Mr. Martin Pihl, Ketchikan, Alaska, ELCA
- 1994 Mrs. Gerry Anne Sahlin, Bow, Wash., ELCA
- 1997 Mr. Jim Stauffer, Missoula, Mont., ELCA
- 1997 Mrs. Susan Stringer, Bellevue, Wash., Alumni
- 2000 Bishop Martin Wells, Spokane, Wash., Bishop ELCA

#### EX-OFFICIO

- 1992 Dr. Loren J. Anderson, Tacoma, Wash., PLU

#### ADVISORY ELCA

- Bishop Donald Maier, Seattle, Wash., Bishop ELCA
- Bishop Ronald Martinson, Anchorage, Alaska, Bishop ELCA
- Mr. Arne Selbyg, Chicago, Ill., ELCA
- Bishop Paul Swanson, Portland, Ore., Bishop ELCA

#### ADVISORY ADMINISTRATION

- Ms. Karin Anderson, Assistant to the President
- Mr. David Aubrey, Vice President for Development & University Relations
- Dr. Laura Majovski, Vice President and Dean for Student Life
- Dr. Paul Menzel, Provost
- Dr. Laura Polcyn, Vice President for Admissions and Enrollment Services
- Rev. Dr. Richard Rouse, Executive Director, Church Relations
- Dr. Sheri Tonn, Vice President for Finance & Operations

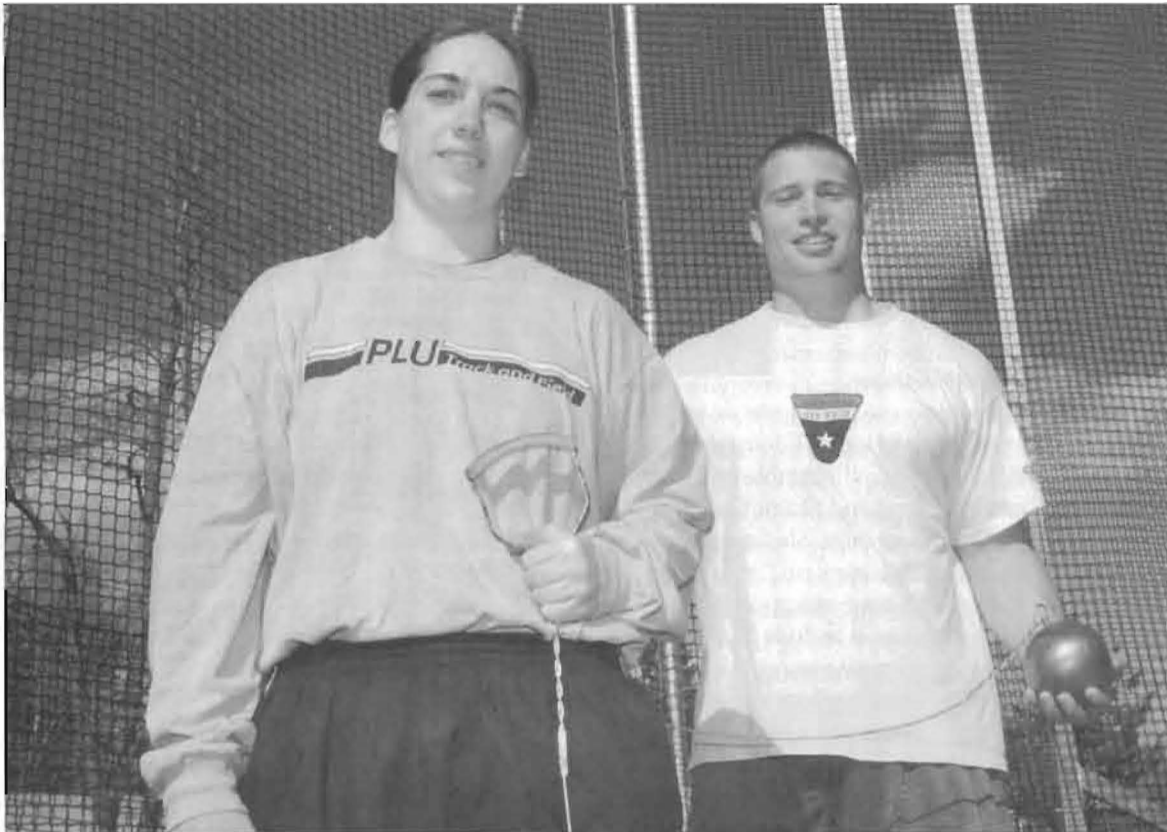
#### ADVISORY FACULTY

- Dr. Michele Crayton, Biology, Vice Chair of Faculty
- Dr. Linda Olson, Faculty At-Large
- Dr. Norris Peterson, Economics, Chair of Faculty

#### ADVISORY STUDENTS

- Mr. Keith Pranghoefer, ASPLU Vice President
- Ms. Aimee Sieverkropp, ASPLU Director of Finance
- Mr. Jason Weber, ASPLU President





**TRACK MASTERS:** Award winners Leslie Seelye & Ryan Dirks bring PLU track & field to the forefront.

## PLU crowned champs in four spring sports

It was another great spring for PLU sports. Here is a list of recently honored PLU sports teams:

**SOFTBALL:** PLU won the Northwest Conference softball title for the third straight year and the 14th time in the past 15 seasons. The conference title is the sixth for head coach Rick Noren in seven years at PLU.

"This year it feels like we have earned something," said Noren. "With the quality of opponents in our conference, along with the automatic berth to regionals, this makes the title unique and meaningful." The Lutes played in the NCAA Division III West Region tournament in May.

**MEN'S TENNIS:** For the ninth time in the past 10 years, PLU is the Northwest Conference men's tennis champion. The Lutes beat Linfield, 4-2, in the championship match held April 21 in Yakima, Wash. The Lutes, who improved their season dual match record to 16-5, rolled past George Fox, 7-0, then beat Puget Sound, 6-1, to reach the title match. Pacific Lutheran has now won the conference tennis title 25 times in the past 32 years. Senior Tyler Imig '01 and sophomore Reid Wiggins '03 earned all-conference honors.

**WOMEN'S TENNIS:** The Northwest Conference women's tennis championship came down to Pacific Lutheran and Linfield for the third straight year, and PLU made it three wins in a row with a 5-4 title victory over the Wildcats this spring. The squad reached the championship with a 6-3 first round win over Willamette and a 6-3 semifinal victory over tournament host Whitman. Stacia Marshall, who made a successful return as head coach of the PLU women's tennis team, was picked by her peers as Northwest Conference Women's Tennis Coach of the Year. Marshall originally served as PLU's head coach in 1985 and 1986, leading the Lutes to an impressive 32-12 dual match record and the 1986 conference championship. Seniors Whitney Freed '01 and Kalei Kowalski '01 were selected to the All-Northwest Team in a vote of the NWC coaches.

**MEN'S GOLF:** For the sixth time in the past seven years, PLU is the Northwest Conference men's golf champion. The Lutes fired a three-day total of 868 to win by 24 strokes. The 868 score was 38 strokes better than PLU's winning score of 906 in 2000. Junior Tyler Kalberg '02 earned medalist honors, shooting a seven-under-par 209. After shooting a 73 on the first round, he had the best scores in the final two rounds, firing a 67 and 69. Joining Kalberg on the all-conference team were seniors Uli Heitz '01 and Zac Thorpe '01, who was the defending conference medalist. Both Lutes shot three-round scores of 219, tied for third in the seven-team competition.

## Football, Track & Field grab top sports awards

BY NICK DAWSON

Chad Johnson '00 and Ryan Dirks '01 will share the Man of the Year in Sports Award, and Leslie Seelye '01 was given the Woman of the Year in Sports award. These and other award winners, selected by the PLU athletics staff, were honored at the annual All-Sports Dessert May 6.

### Man of the Year in Sports: Chad Johnson, Football

Chad Johnson played quarterback on the 2000 football team, helping take them to the second round of the Division III football playoffs after a national championship season in 1999. He was named winner of the Gagliardi Trophy, a national award presented to a Division III football player who excels in athletics, academics and community service. Johnson finished his senior season completing nearly 65 percent of his passes for 3,304 yards and 26 touchdowns. He earned Northwest Conference Offensive Player of the Year for the second straight season and was a first team all-conference pick for the third time. Johnson maintained a 3.5 GPA before graduating from PLU last December with a degree in business administration and a minor in religion.

### Man of the Year in Sports: Ryan Dirks, Track & Field

Ryan Dirks won the 2001 national indoor track & field title in the 35-pound weight throw for the second straight season, throwing a personal best 60-8 3/4. Dirks has led all Division III athletes in the hammer, throwing 185-8, and was national runner-up in 2000. Each of the past two years, Dirks has been on the leadership team of PLU's Fellowship of

Christian Athletes organization, and Bible study leader for the track team. A former undergraduate teaching fellow in the School of Physical Education, Dirks graduated this spring with a 3.3 GPA in physical education with an emphasis in exercise science.

### Woman of the Year in Sports: Leslie Seelye, Track & Field

Leslie Seelye is the defending conference champion in the women's hammer throw and has been ranked as high as fifth nationally in the event. She represented PLU at the national meet for the fourth straight year this May. Seelye has tutored elementary school students in reading for four years and in math for one year. A secondary education and English/language arts major, Seelye graduated this spring with a 3.62 GPA.

### OTHER AWARD WINNERS:

**DR. STAN MUELLER AWARD FOR ATHLETIC TRAINING:** Megan Morehouse '01

**LUTE SERVICE AWARD:** Matt Price '01, crew/ Lisa Lindsay '01, cross country and track & field

**LUTE INSPIRATIONAL AWARD:** Jess Nelson '00, football/ Betsy Ruud, basketball

**RUDY AWARD:** Randy Webster, swimming/Lucy Barker, basketball

**GEORGE FISHER SCHOLAR-ATHLETE AWARD:** Shane Ness '01, soccer (graduated last December with 3.64 GPA in Biology)/Lia Ossiander, cross country and track & field (3.95 GPA in Chemistry).

**SENIOR ATHLETE:** Alison Brennan, soccer

**SENIOR ATHLETE:** Katie Davis, crew

**SENIOR ATHLETE:** McKenna Dotson, softball

**SENIOR ATHLETE:** Tyler Imig, tennis

**SENIOR ATHLETE:** Alan Davies, cross country and track & field

**SENIOR ATHLETE:** Randy Webster, swimming

**FIND OUT HOW OTHER SPRING SPORTS TEAMS FINISHED. GO TO [www.plu.edu/encore](http://www.plu.edu/encore)**

## Homecoming 2001 Alumni Recognition Awards

### Distinguished Alumnus Award

For his work in the field of medical research and his dedication to Pacific Lutheran University, **Mark B. Knudson '70** receives the 2001-2002 Distinguished Alumnus Award.

Knudson received his B.S. in biology from PLU and his Ph.D. in physiology from Washington State University in 1974. He received the National Institute of Health Postdoctoral Fellowship and was a post-doctoral fellow and faculty member at the University of Washington School of Medicine from 1975 to 1979.



In 1983, he founded Arden Medical Systems and served as president and CEO until its 1986 acquisition by Johnson and Johnson, Inc. He was then president of Johnson and Johnson Professional Diagnostics until 1989. Since then, he has been a partner of Medical Innovation Partners, a venture capital firm. Knudson is currently chair and CEO at Venturi Group, and president and CEO of Pi Medical, Inc.

Knudson has numerous U.S. and foreign patents, has published articles and been called to testify before Congress on medical issues.

He is a member of the PLU Board of Regents. He and wife Susan (Voorhees) '70 are senior fellows in Q Club and members of the Heritage Society. They live in Shoreview, Minn. and have two daughters, Kirstin and Amy.

### Outstanding Alumnus Awards

For her achievement in the field of music as a teacher, lecturer, and composer of contemporary music, **Cindy McTee '76** receives a 2001-2002 Outstanding Alumnus Award, an honor that recognizes those who have excelled in a special area of life.



McTee, a native of Eatonville, Wash., received her bachelor of music degree from PLU, followed by a year of study at the Higher School of Music in Cracow, Poland. In 1978, she earned a master's of music degree from Yale, and in 1981 a doctorate from the University of Iowa. McTee taught at PLU from 1981 to 1984, then went to the University of North Texas, where she continues as a Regents professor of music composition.

Ensembles throughout the United States, Japan and Europe perform her compositions. She has received numerous awards including a Composer's Fellowship from the National Endowment for the Arts, a Goddard-Lieberson Fellowship from the American Academy of Arts and Letters, and a Fulbright-Hayes Senior Lecturer Fellowship.

McTee lives in Denton, Texas.

**Maureen (Pearson) Hoban '60** receives a 2001-2002 Outstanding Alumnus Award for her vast work in the field of education for the Tulalip Tribe near Marysville, Wash.

Hoban graduated with a bachelor of education degree in 1960. In 1972, she was hired by Everett Community College to work with low-income and

at-risk parents in setting up HeadStart programs in north Snohomish County.

In 1993, she established a branch of Everett Community College on the Tulalip Reservation.

Her 1991 master's thesis earned her an invitation to participate as an adviser to the Washington State Higher Education Coordinating Board. It also led to the establishment of the North Snohomish, Island and Skagit Counties Higher Education Consortium. She was recognized as a 1999 "Woman of Achievement," by the Seattle Chapter of Women in Communication.

Hoban's current projects include Technology Leap, a collaborative program connecting the Tulalips to the world of technology and the Internet.

Maureen and her husband, Thomas, live in Marysville, Wash., and have three children and 10 grandchildren.



### Outstanding Recent Alumnus Award

For excelling in the field of bioanalytical chemistry, **Neil Kelleher '92**, assistant professor of chemistry at the University of Illinois, receives the 2001-2002 Outstanding Recent Alumnus Award.

Kelleher received his B.S. in chemistry and B.A. in German from PLU. Upon graduation, Kelleher won a Fulbright Scholarship and went on to conduct organic synthesis research at the University of Cologne. Kelleher earned his Ph.D. in chemistry from Cornell in 1997. While at Cornell, Kelleher's research bridged the realms of analytical chemistry and microbiology.

After earning his Ph.D., Kelleher won a National Institutes of Health Postdoctoral Fellowship to Harvard University Medical School. He then joined the faculty at the University of Illinois. Kelleher has also been honored with the Burroughs Wellcome Fund Young Investigators Award, the Searle Scholar Award and the Henry Dreyfus Foundation Award for New Investigators. He has also formed the Kelleher Group, a 15-student team engaged in biological research for organisms with completely sequenced genomes.

He and his wife, Jennifer '91, live in Urbana, Ill., with their daughter, Emily.

### Heritage Award

For his years of distinguished service to the university and the community, **Brian Olson '83** posthumously receives the 2001-2002 Heritage Award.

After earning B.A. degrees in economics and mathematics in 1983, Olson served PLU as an admissions counselor before completing his M.B.A. at Southern Oregon State University in 1987. Soon after, he joined Hewlett-Packard in Boise, Idaho, where he worked until November 2000, most recently serving as a marketing manager. Olson made a lasting impact on diversity issues and employee recruitment.



He provided strong leadership to the PLU Alumni Board from 1991-2000, particularly as board president from 1997-99. Olson served as co-chair of the alumni and parent leadership team on the current Campaign for Pacific Lutheran University. He felt strongly about helping students succeed, and in his will, he helped establish the Brian C. Olson Scholarship Fund.

Olson was an active member of Shepherd of the Valley Lutheran Church in Boise, where he most recently served as congregation president and as a member of the worship band. He died in November 2000, of complications resulting from cancer.

Brian is survived by his sons, Daniel and Benjamin; their mother, Mary (Boyd) Olson '81; mother, Clarene (Osterli) Johnson '56; father, Robert '57; three brothers, Paul, David '83 and Knut '91; and sister Marianne.



### Special Recognition Award

**Larry Neeb** receives the 2001-2002 Special Recognition Award for his years of leadership and service to the university.

As a PLU Regent, he has been a member of the budget and finance committee since 1995, chair of the budget and finance committee since 1998 and co-chair of the Regents Fund of the campaign steering committee for the Campaign for Pacific Lutheran University: The Next Bold Step. Professionally, Neeb is the founder and president of Creative Communications for The Parish, Inc., an ecumenical publishing company based in St. Louis, Mo.

He contributes to a wide range of organizations including PLU's Q Club at the President's Circle level; the Campaign for Pacific Lutheran University: The Next Bold Step; and KPLU.

Neeb received his junior college education at Concordia Lutheran College in Austin, Texas, finishing at Concordia Senior College, Fort Wayne, Ind. He received a master's of divinity degree from Concordia Seminary, St. Louis in 1964; a master's of sacred theology degree from Concordia Seminary, St. Louis, in 1973; and a doctor of ministry from Eden Theological Seminary, St. Louis in 1975.

He is a member of Christ Lutheran Church in Webster Groves, Mo.



### Alumni Service Award

**Darcy (Berube) Johnson '78** receives the 2001-2002 Alumni Service Award for her volunteer efforts, which have helped to build affordable housing for low-income residents in communities on Lake Washington's Eastside.

Johnson received her M.B.A. in 1982, and worked as a portfolio manager for a number of years. It was while she was on leave from the investment business, and caring for her children

full-time, that she became involved with St. Andrew's Housing Group. Johnson served five years as president and chair of the housing group, which was founded by members of St. Andrew's Lutheran Church of Bellevue. She led the group through site selection, property negotiations, and fund-raising.

The St. Andrew's Housing Group's first project, Andrew's Arms in Issaquah, Wash., opened its doors in 1992 to low-income residents and senior citizens. The second project, Andrew's Heights in Factoria, Wash., opened in 1996.

Johnson has been in the investment management business for 21 years. She currently manages assets for endowments, foundation and high net worth individuals at Bank of America. She also serves on the equity strategy committee and is a member of the Seattle Society of the Association for Investment Manager Research.

She and her husband, Dan '76, and children, Matt, Sarah, and Joel, live on Mercer Island, Wash.



## Alumni Board Holds Spring Meeting

The highlight of each spring meeting of the PLU Alumni Board is to confirm the work of the Awards and Recognition committee. Their work is reflected on the previous page. The Board also approved a recommendation to create a new award to honor the extraordinary commitment and accomplishments of past alumni board president, Brian Olson, who died this past fall from complications following surgery for colon cancer. The Brian C. Olson Award is presented to a student who has demonstrated commitment to the university and the alumni association. By recognizing the importance of connecting students and alumni, this student has shown a potential for life-long service to the university.

The Nominations Committee submitted their recommendations to the Board for filling vacant positions on the Board (please confirm these nominations by voting on the ballot found on this page, or by going to the Alumni and Parent Relations Website which you will find at [www.plu.edu/~alumni/](http://www.plu.edu/~alumni/). In related business, the Alumni Board by-laws were changed so that in the future, one of three Alumni Board representatives to the Board of Regents will be the current board president.

Darren Hamby '84, '92 was recognized for his service as Alumni Board President these past two years. Rebecca (Nauss) Burad '74 will assume the role of President and Bev (Tranum) Knutzen '55 will become the Vice President at the fall meeting of the Board.

All other committees reported on their work and established goals for the 2001-2002

### OFFICIAL BALLOT

#### 2001-02 Alumni Board of Directors

The Alumni Board of Directors brings these candidates to the Alumni Association for confirmation. Please vote for two candidates; two response boxes are provided for alumni in the same household.

DETACH AND MAIL BY JULY 15, 2001 TO: Office of Alumni and Parent Relations, PLU, Tacoma, WA 98447-0003; OR CAST YOUR BALLOT ONLINE: [www.plu.edu/~alumni](http://www.plu.edu/~alumni)

- Clarence (Osterli) Johnson '56  
Lakewood, Wash.
- Christine Tye '91  
Salem, Oregon

DUE DATE: JULY 15, 2001

## Homecoming 2001 - October 12-14

"All The World's A Stage" is the theme of Homecoming 2001. This year we pay special tribute to members of the classes of 1951, 1956, 1961, 1966, 1971, 1976, 1981, 1986, 1991, 1996 and all Choir of the West\* alumni. However, Homecoming 2001 is for everyone! We look forward to offering many of the popular events you have come to enjoy, as well as several exciting new ones.

Xavier Hall will be rededicated during the weekend's festivities and plans for that will be released soon. If you remember Xavier as the library, or attended class in this grand building, you won't want to miss the celebration.

### Friday, October 12

Attend a regularly scheduled class; participate in the alumni career fair known as Java, Jobs and Jazz by serving on a panel or being available to talk with

current students; attend the annual Heritage Lecture; enjoy lunch while learning about several outstanding men and women being inducted into the Athletic Hall of Fame; and finally join us at the annual Homecoming Gala.

### Saturday, October 13

Class reunion brunch events, the Golden Club Brunch at the Gonyea House, the Alumni Tent and Lute Football game at Sparks Stadium, and the Class/Choir of the West reunion event at the Tacoma Country and Golf Club are just a few of the activities planned for Saturday.

### Sunday, October 14

Sunday worship with University Congregation and the Choir of the West Reunion Concert.

\*Choir of the West reunion information has been sent directly to past choir members. If you have not received the information, please contact us.

### PLU Gold Event

#### SEATTLE MARINERS

Saturday, July 14, 2001

GAME TIME OF 1:05PM

Join other Lute alumni from 1991-2001 for an exciting afternoon at Safeco Field as the Seattle Mariners take on the San Francisco Giants. After a sunny afternoon of cheering on the Mariners, we'll walk over to Pyramid Brewery for casual dinner and good times.

Registration for you recent grads is online only—visit us at [www.plualumni.com](http://www.plualumni.com) for details, costs, and to sign up!

## What's new with you?

MAIL TO: Office of Alumni & Parent Relations, PLU, Tacoma, WA 98447-0003; FAX: 253-533-8555; EMAIL: [alumni@plu.edu](mailto:alumni@plu.edu); INTERNET FORM: [www.plu.edu/alum](http://www.plu.edu/alum)

Please fill out as much information below as possible, including city of residence and work. Feel free to use another piece of paper for additional comments. Photos are welcome, but only one (1) photo will be used, and on a space available basis. Notes will be edited for content. **Deadline for the next issue of Scene is Friday, June 29, 2001.**

#### Marriage (no engagements, please)

SPOUSE'S NAME (first, middle, maiden, last)

DATE/PLACE OF MARRIAGE

SPOUSE'S OCCUPATION

#### Birth

CHILD'S NAME (first, last)

BIRTH DATE

GENDER:  MALE  FEMALE

SIBLINGS/AGES

#### Promotions/Awards

NAME

TITLE OF POSITION/COMPANY/AWARD/DATE ASSUMED

NAME (last, first, maiden)

PLU CLASS YEAR(S)

SPOUSE

SPOUSE'S PLU CLASS YEAR(S) IF APPLICABLE

STREET ADDRESS

IS THIS A NEW ADDRESS?  YES  NO

CITY STATE

ZIP

HOME PHONE

EMAIL/WEBSITE POST ON THE ALUMNI EMAIL DIRECTORY?  YES  NO

#### Job Information

JOB TITLE

EMPLOYER

WORK ADDRESS

CITY, STATE, ZIP

WORK PHONE

WORK EMAIL

## 1936

**Ellen Torongo** received the community service award and was inducted into the Clark County Hall of Fame sponsored by the East Vancouver Rotary Club. A rose, the "Anisly Dickson," and a plaque honoring Ellen were placed in the Orchards Rose Garden.

## 1941

**Lenore Taylor** died on Jan. 28. While at PLU she was a member of the Choir of the West. After PLU, Lenore taught elementary school and televised music education in the Clover Park School District. She was a member of Q Club and charter member of Christ Lutheran Church in Lakewood, Wash. She was preceded in death by her husband of 45 years, **Blair '40**. She is survived by two daughters, **Karan Vanderwarker '64** and Toni Hardman; five grandchildren and one great-grandchild.

## 1943

**Harold Peterson** died on Jan. 27. After PLU, Harold earned a master's degree from the University of Washington. He was a principal for 32 years in the Tacoma School District. He served in World War II and was a member of the WEA, NEA, Phi Delta Kappa, the Elks Lodge and a long-time member of Trinity Lutheran Church. Harold is survived by his wife of 54 years, **Bernice '43**, sons, Lanny and Davis; and eight grandchildren.

**Rolv Schillios** died on Oct. 2. Rolv spent his professional career as a journalist except for a term as administrative aide to a U.S. congressman in Washington, D.C. During WWII, he was the youngest combat correspondent in the U.S. Navy and at the end of the war, he covered the war crime trials in the Philippines. He worked for several years as a reporter for the Eugene (Ore.) Register Guard. In 1969, he became editor of Portland Magazine, published by the Portland Chamber of Commerce. Over the next 18 years, he turned the magazine into a national award winner. Rolv was also honorary consul general for the Republic of Korea and was twice elected Dean of the Oregon Consular Corps. Rolv is survived by his wife, Olive; daughter, Siri; son, Mark; and two grandsons.

## 1949

**Helen (Jensen) Weathermon** died on Feb. 6. After PLU, she taught school in St. Helens and Aberdeen, Wash., for several years before her daughters were born. She is survived by her husband of 49 years, **Richard '50**, and daughters, Kristine and **Karen '83**.

**Alvera (Johnson) Westberg** died on Feb. 27. Alvera attended Lutheran Bible Institute, received a bachelor's degree in education at PLU, and then completed a master's degree in education at the University of Oregon. She taught school at every grade level and served as a parish worker in Bremerton, Wash., where she married **Horace "Jerry" Westberg '49** in 1947. Alvera and Jerry served in ministry in Iowa, Oregon and California before retiring to Tacoma. She wrote or

co-wrote 10 books, contributed to several others and published poetry. She also led a Christian writer's workshop and numerous Bible study groups. Alvera was preceded in death by her husband, and is survived by her daughters, Judi, Ruth and Carolyn and seven grandchildren.

## 1950

**Lorry and Beth (Gottwald) Peterson** celebrated their golden wedding anniversary last June. They were married on June 24, 1950 in Castle Rock, Wash., after their graduation from PLU. They taught in the Longview, Wash., public schools for six years before moving to San Luis Obispo, Calif., in 1956, where they taught in the San Luis Coastal District. Larry received a Master of Arts degree in administrative education from Col Poly in 1959. Beth received a Master of Arts degree in education in 1969. They enjoy spending time with their two sons, Joel and Jeffrey, their daughters-in-law and six grandchildren. They lost their daughter, Janel, in a car accident in 1974. Larry and Beth are involved at Mount Carmel Lutheran Church as well as travel, golf and participate in elderhostel activities.

## 1955

**Faith Bueltmann Stern** was in China for five weeks in October and November. In March, she was in Whistler, B.C., skiing for ten days. This fall she is planning a trip to Eastern Europe.

## 1956

**Norma Borgford** is now fully retired. She keeps busy as a volunteer and looks forward to the 45<sup>th</sup> reunion for the class of '56 at Homecoming 2001.

## 1958

**Lind Karlsen** and Yoshiko Kaneda were married on Feb. 7.



## 1960

**Eileen "Paddy" (O'Callaghan) Myers** died on Jan. 31 in Yakima WA of ovarian cancer. She taught in six different school districts, earned a M.Ed. while in Oak Harbor, raised three children, drew, painted, did rosemaking, and quilted. She is survived by husband, Steve, daughters Jennifer and Kari, son Steven, and three granddaughters.

## 1961

**Kenneth Black** retired from the state of Washington after 28 years in the administrative offices in Yakima. He has been teaching in the Bachelor of Social Work program at Heritage College in Toppenish, Wash., for several years.

## 1962

**Orville Jacobson** and his wife, Donnalee, moved in October to Port Orchard, Wash., where Orville is the new associate pastor at First Lutheran Church.

## 1964

**Jeanne (Ogden) Nalbach** died on Jan. 30. A bluegrass musician, Jeanne played the piano, guitar, violin and mandolin and was a singer. She was also a published songwriter. Jeanne is survived by her husband, Larry; son, Scott; daughter, Lynne; and a grandson.

## 1966

**Willy (Baer) Ertsgaard** was promoted to vice president of the western region for McGraw-Hill/SRA on Nov. 1. The region includes 10 states. She was previously the Washington state sales representative for eight years.

## 1968

**Janice (Reinikka) Piper** is the resource coordinator at Kaiser Permanente Center for Health Research in Portland, Ore. She received a master's degree in public health from Lama Linda (Calif.) University.

## 1969

**Julie (Svendsen) Anderson** is in her second year as a language arts specialist for the Oregon Department of Education.

**Paul Dessen** retired after 31 years of teaching high school English. He continues to coach swimming at Astoria (Ore.) High School.

## 1970

**Peter Swanson** is a compliance officer at Affiliated Health Services in Mount Vernon, Wash.

## 1971

**Chris Boerger** is the pastor at Northlake Lutheran Church in Kenmore, Wash. Northlake was recently identified as one of the 300 best Protestant churches in the U.S., in a study conducted by Dr. Paul Wilkes at the University of North Carolina, Wilmington. "Excellent Protestant Congregations: The Guide to Best Places and Practices," (Westminster John Knox) was published as a result of the two-year study funded by the Lilly Endowment.

## 1972

**Jim Fischer** has a new position as parts director at Auburn Valley Cars, a multi-line automobile dealership. His fourth grandson was born on Jim's birthday, Feb. 6. All four grandchildren are under 3 years old.

**Colleen LeMagie** provides psychiatric services to the rural Bighorn Basin in Cody, Wyo. Her first grandchild, William Keith, is 1 year old.

## 1973

**Sara (Quigley) Wick** is back in the Pacific Northwest after 19 years in Texas. Her son, Brian, is a senior and her daughter, Sydne, is a sophomore, both at Wilson High School in Portland, Ore. Sara is the regional underwriting manager at Universal Underwriters Insurance Company.

**Evelyn (Peers) Bowen** died January 8, when she was struck by a vehicle while walking through a crosswalk in Auburn, Wash. Evelyn was a deacon for the last three years at St. Matthew Episcopal Church. The one-time nurse devoted her life to spiritual concerns and the care of others.

## 1974

**Suzanne Staub Tushkov** moved to Renton, Wash. She is a registered nurse case manager for Gentiva Health Service in Kent. Her son, Tyler, is a freshman at Central Washington University.

## 1975

**Daniel Eum** died on Jan. 9. He entered the U.S. Army in 1946 and served in Europe during the post-war occupation where he met his wife, Ruth. He also served in Korea, Alaska and Hawaii. Daniel retired as a major in 1966 and moved to Tacoma. While living in Tacoma, he was the director of the Advanced Technology Center at the Keyport Naval Station until his final retirement in 1995. He is survived by his wife; three daughters, Rose, **Patricia '76**, and Michele; seven grandchildren and one great-grandchild.

**Thomas Van Vleet** is a Lutheran Brotherhood district representative in Everett, Wash. He recently qualified for membership in the 2000 Top Club, one of Lutheran Brotherhood's most prestigious honors given to district representatives who are successful in helping their clients link faith, values and finances.

**David Nelson** is serving as administrative director of the global AIDS program in Lusaka, Zambia for the Centers for Disease Control and Prevention based in Atlanta, Ga. His wife, Ubon, and son, James, have accompanied him.

**Deuane Kuenzi** has accepted the position of Director of Music at Messiah Lutheran Church in Auburn, Washington. Deuane also conducts the professional choir *Gloriana* and is the organizing chairperson of the 75th anniversary celebration of the Choir of the West to be held at Homecoming in October. All PLU alumni are invited to come and sing with the Sanctuary Choir at Messiah Lutheran.

## 1977

**Linda (Weberg) Lair** is on the board of governors at Opportunity International.

**Ann Hafer** became a senior vice president at The Northern Trust Company, Chicago, in February. She is division manager of the Commercial Real Estate Group. Before joining Northern Trust as a vice president and division manager in private banking in 1998, Ann was associated with First Bank (U.S. Bank) in Billings, Mont., from 1992-1998, most recently as president. Ann received an M.M. degree from the J.L. Kellogg Graduate School of Management at Northwestern University. She is a board member of the Real Estate Investment Advisory Council, the Real Estate Finance Forum, the National Advisory Council of Rocky Mountain College and a member of the Board of Regents at PLU.

## 1978

**Linda Dyer** died on Dec. 10 after a battle with breast cancer. Her career included Army military intelligence, being the first female correctional officer at McNeil Island Federal Penitentiary, public affairs for the Tacoma Police Department and Army; work as an interior designer and TQM facilitator. She is survived by her husband, **Richard '80**; three children; and two sisters, **Leslie Watts '65** and Lauren Geer. Her parents and youngest son, Ian, preceded her in death.

**Daniel Luce** and Amanda Houston were married on June 9, 2000. Daniel is a principal in the Clover Park School District in Lakewood, Wash., and Amanda is a first-grade teacher.

**Karl Fritschel** is the MIS manager of the western division at WorldTravel BTL. He continues to be the organist at Maple Leaf Lutheran Church where he has served for more than 17 years.

**Carrie (Kipp) Howard** and her husband, Andy, announce the arrival of Lily Elisabeth. Lily was born on March 18, 2000, and adopted on March 6, 2001, in Anhui Province, China. She joins Tesso, 5, who was also adopted from China. Carrie is a writer and editor.

## 1981

**Susan Scott** and Christopher Hoffman were married on Aug. 12 on Orcas Island, Wash. They honeymooned on the island of St. John in the Virgin Islands.

## 1982

**Kathy (Johnson) Schaller** and her husband, Paul, announce the birth of Nicole Elizabeth, on Dec. 16. She joins Paul's son, Benjamin, 14.

**Mark Chesnutt** and his wife, Asha, announce the birth of Jack Nedathur, on Jan. 18. He joins Cameron, 5, and Mika, 4.

**Paul Mueller** and his wife have two children, Jon, 13 and Erika, 9. Paul is a remodeling carpenter. They live in Steilacoom, Wash.

**Jean (Johnson) DeWitt** and her husband, Rick, announce the birth of Frederick "Derick" William, on Feb. 25. On their first morning home from the hospital, they were awakened by the Ash Wednesday earthquake.

## 1983

**Todd Baxter** died in May 2000. He was vice president of operations of the Pam Companies in Sioux Falls, S.D. Todd also sponsored a foster child in Ecuador and corresponded with him frequently for the past 10 years. He was an avid reader, fluent in Spanish and enjoyed traveling abroad. Todd is survived by his parents, Patricia and Rod; brother, David; and sister, Pamela.

**Eric Dooley** and his wife, Jenny, have been missionary church planting in Southeast Asia for 15 years. They are now taking a one year furlough in Gig Harbor, Wash., with their five children, Emily, 15, Natalie, 13, Nicole, 9, Rachel, 7, and Ian, 4. They will be there until June 2002, and then return to Asia.

# Doctor excels in medicine—and hot-air ballooning

BY DREW BROWN, EDITOR



Dr. Clayton Cowl



LEVITATING: Cowl in his hot-air balloon.

One great PLU mystery is the origin of “Free Radicals” sign that hangs on the far wall of the Rieke open lab. It’s been there since 1987, when Clay Cowl ’88 (along with fellow chemistry alum Greg Schuster ’88) celebrated their underdog chemistry softball team’s championship by creating the sign. The banner is a symbolic, if not humorous tribute to what the PLU experience was for Cowl—working hard, playing hard, and having divergent experiences.

Cowl made most of his news at PLU away from chemistry. His senior year, he was editor of *The Mooring Mast*.

Cowl found one of his greatest PLU mentors in someone who would be considered odd for a chemistry major—Frosty Westering. Cowl didn’t play football, but covered the team extensively for the *Mast*. Cowl learned from Westering concepts and principles that he has used throughout his career.

“I brought Frosty’s Breakaway idea—taking people and focusing them on a single goal—to Northwestern,” Cowl said. “They’re still using those concepts.”

After graduating from PLU, Cowl went to medical school at Northwestern University in Chicago, completed two residencies and finally landed at the Mayo Clinic in Rochester, Minn. At Mayo, he completed training in pulmonary diseases and was appointed the research chair of the Division of Preventive and Occupational Medicine, as well as chief of the Aviation Medicine Section. He lives in Rochester with his wife, Cammy, and children, Andrielle, 7, Arianna, 5, Alicia, 2, and Adam, who was born Feb. 7.

Cowl spends much of his time on patient care, performing forensic pilot examinations for certification with the Federal

Aviation Administration and seeing referrals for occupational lung disease. He is also an active researcher and consults for Northwest Airlines on such issues as establishing aircraft oxygen standards.

Cowl has one distinct hobby—but for him, describing hot-air ballooning as a hobby may not accurately cover it. Since being commercially rated as a hot-air balloon pilot seven years ago, he has accumulated three balloons and spends his summer months participating in maneuvering competitions.

“It’s like levitating. There is no turbulence, because you are rising with the air currents, not fighting them. You can fly from as high as 10,000 feet to almost as low as you want to go,” Cowl said. “Riding through a thousand-acre cornfield over the tops of the tassels is like being on the ocean.”

Cowl has quite effectively found a way to merge his hobby with his profession. His research paper, “Factors Associated with Fatalities and Injuries from Hot-Air Balloon Crashes,” appeared in the *Journal of the American Medical Association*. “Balloons are very safe if you use common sense and don’t break the rules,” says Cowl. “Pilot error—not mechanical failure—is the biggest cause of accidents.” And the biggest risk to pilots? Power lines.

Since Cowl’s article was published, he has been considered a national expert on hot air balloon safety. While he enjoys helping the hot-air ballooning community through his advice, it’s a hobby first.

“It’s a nice diversion from medicine, and I get to meet a lot of different people” he says. “Everyone should experience it at least once.”

## 1984

**Kelly (Irwin) Townsend** is an educator and her husband, Rich, is a financial planner. They live with their daughter, Rikki, 7, on Marco Island, Fla.

**Rod Nubgaard** transferred from the U.S. Coast Guard to the Nuclear Regulatory Commission where he is chief of planning and budget operations. He also coaches U-10 select girls, U-7 coed and kindergarten soccer teams and coordinates a soccer clinic for 3 to 5-year-olds. The clinic has grown from 35 to 160 kids in four seasons.

## 1985

**Kevin Morrow** and DeAnna Cross were married on July 26, 2000 in Maui, Hawaii. Kevin is a teacher at Lincoln High School and DeAnna is an executive assistant.

**Trudi Strain-Truett** recently completed a four-book series on weather for Scholastic Books. The non-fiction books on clouds, rain/hail, storm chasing and the water cycle are geared to 10-12 year olds. She is now working on a new series on volcanoes, rocks, fossils and earthquakes. In February, Trudi experienced the Nisqually (Wash.) earthquake, but would have preferred not to do such firsthand research. She spent several years as a television news reporter and anchor before becoming a professional freelance journalist and writer. Her specialty is fiction and non-fiction for children and young adults.

**Linda Skibieli-Gossler** was promoted to assistant vice president at Safeco Securities, Inc.



## 1987

**James Diacogiannis** completed a master’s degree in ministry through Pepperdine University’s Seattle extension program in August 1999. He and his wife, Laurel, had their ninth child in April 2000. Josiah Daniel joined Hosanna, 4, Benjamin, 7, Joshua, 10, Carissa 12, Lindsey, 12, Jeremiah, 14, Cassie, 15, and Gregg, 16. After living in the Puyallup area for 16 years, the family was ready for a change. They bought Sunshine Blueberry Farm in Everson, Wash., in May 2000 and spent the summer learning all about harvesting blueberries. James recently enjoyed his second year of teaching at Cascade Middle School in Sedro Woolley.

**Theo and Margie (Ferguson ’91) Roe** announce the birth of Ferguson Edward Roe, on May 26, 2000. He joined Margaret, 2.

**Barth Merrill** is serving as the aide to the Surgeon General of the Navy. He will be transferred to the Bremerton Naval Hospital family practice department as a staff physician during the summer.

**Steve and Lisa (Mikulencak ’89) Danis** announce the birth of Dominic Albert, on June 5, 2000. He joins Matteo, 4, and Lorenzo, 2.

**Kathy (Nelson) Gibson**, the head women’s basketball coach at Issaquah High School, was named the 2001 Kingco Women’s Basketball Coach of the Year. The Kingco league is in the AAA division.

Her team posted an 18-7 record in league play, which advanced them to the district tournament. At Districts, the competition proved tough as they missed qualifying for one of the six spots to advance to the state tournament, and five out of the six



teams that advanced from their district, ended up in the top eight finishers at state.

Along with her coaching duties, Kathy is also a teacher. She has been at Issaquah High School for three years and was previously at Mt. Si High School in North Bend for six years.

## 1988

**Todd Kelley** was recently promoted to manager of media relations in a department-restructuring move at MultiCare Health System in Tacoma. He was in a similar position at MultiCare for 10 years. Todd has also been teaching public relations part-time at Tacoma Community College. He lives near Puyallup with his wife, **Suzanne (Capelli ’89)** and their daughters, Sara, 5, and Lisa, 2.

**Scott Campbell** is the business development manager at ESRI in Redlands, Calif.

**Michael Herlevi** and Jennifer Golle were married on Sept. 24, 1998 in San Diego, Calif. Michael is in sales at Bertek Pharmaceuticals and Jennifer is in real estate sales.

**Cynthia (Laur) Rivers** and her husband, Darren, announce the birth of their son, Kele Tamas, on Feb. 20. Their Super Bowl wedding last year was followed by a Super Bowl baby shower this year. Everyone is trying to figure out what Super Bowl 2002 will bring.

**Alexander Seidel** is a search consultant at lon Martin Technology Staffing in Bellevue, Wash.

**Susan (Donovan) Winton** and her husband, Craig, have returned to the Los Angeles area after five years in New Zealand and Australia. They return with a daughter, Mackenzie, who was born in Australia in May 1999.

**Julie (Allen) Fenedick** and her husband, John, announce the birth of Thomas Evan, on March 8. They live in Bellevue, Wash.

## 1989

**Cate Milburn and Deb Lambourn ’91** have been together more than 10 years. Their godchildren, Rocky, 15, and Stephanie, 12, have been living with them for more than two years. Deb has returned to school to obtain a computing degree. Cate has been a manager at Boeing for four years and loves her work.

**Kevin Eliason** and his wife, Kristin, adopted Halla, 4 and George, 2, from Monrovia, Liberia. They joined Jasmine, 8, and Reid, 6.

**Jonathan and Nancy (Cratsenberg ’88) Edmands** announce the birth of Ava, on Dec. 18. She joins Kohl, 6, and Brant, 4. Jonathan is a Lutheran Brotherhood district representative in Bellingham, Wash. He recently qualified for membership in the 2000 Leaders’ Club, one of Lutheran Brotherhood’s most prestigious honors given to district representatives who are successful in helping their clients link faith, values, and finances.

**Devin Dice** is employed by Justin Boot Company. He travels to rodeos and provides sports medicine coverage to rodeo athletes as a member of the Justin Sports Medicine team.

**Brad and Laura (Beck) Medrud** announce the birth of Paul, on March 1. Brad is a land use planner at AHB, Inc., in Tacoma.

**Heidi (Hermanson) Nagel** and her husband, David, announce the birth of Madison Paige, on Nov. 5. Heidi returned to work in April after taking five months off following Madison’s birth.

## 1990

**Robyn Wells** has released two solo classical piano CDs. The first, “A Grand Adventure,” includes the world premiere recording of the “Nostalgic Waltzes” by Ross Lee Finney. The second, “A Grand Italian Adventure,” contains works highlighting Italian life and culture. It also includes a Tarantella written by Robyn. The “Italian” CD was recorded at PLU last fall. Both CDs are available by writing to: A Grand Adventure, P.O. Box 11, Nampa, Idaho 83653-0011.

**Daren Skonord** is a Lutheran Brotherhood district representative in Spokane. He recently qualified for membership in the 2000 Leaders’ Club, one of Lutheran Brotherhood’s most prestigious honors given to district representatives who are successful in helping their clients link faith, values, and finances.

**Amy Drackert** and David Pelton were married on Sept. 23 at Lake Quinault Lodge. David is a software test engineer at Microsoft.

**Angela Coote-Clites** and Michael Considine were married on Feb. 24 in Concord, N.H. Angela is an agricultural statistician for the New England Agricultural Statistics Service and Michael is a bridge superintendent.

**Stuart and Jenna (Hayden ’89) Ashley** announce the birth of Owen, on March 3.

## 1991

**Jon Funfar** was named city communications coordinator for the City of Enumclaw, Wash., in August. He is in charge of Enumclaw Municipal Television and the city’s website. Jon appreciates the opportunity to live, work, and serve the public in his hometown, and the commute is great!

# alumni class notes

**Jeremy Desel** spent six weeks in Tallahassee, Fla., covering the presidential election for KHOU-TV in Houston, Texas. While he was in Florida he learned he was awarded a Dallas Press Club "Katie" award and two Suncoast region Emmy award nominations.

**Erika Somm** and her husband, Peter Davis, announce the birth of Vivien, on Dec. 31.

**Larry Deal and Lisa Simonsen** announce the birth of Bruce Lorence, on Dec. 9.

**David Hatlen** and his wife, Kari, announce the birth of Kate Christine, on Oct. 21. David is the vice president of HomeStreet Bank in Seattle.

**Brian Kampe** and his wife, Amy, announce the birth of Amando Grace, on Jan. 2. She joins Julianna, 3. Brian is the national accounts category manager for The Perrier Group.

**Lynne (Haney) De La Cruz** and her husband, Mike, announce the birth of Kira Lynne, on Feb. 22. Lynne returned to work in April as the health education coordinator for the acute and communicable disease program at the Oregon Health Division. She was previously at the American Cancer Society for seven years. They continue to live in the Portland area.

**Beth Anne Newbill** and Robert Percival were married on Dec. 2 at Northlake Lutheran Church in Kenmore, Wash. They live in West Seattle.

**Heidi (Porter) Stenzel** and her husband, Casey, announce the birth of Cole Thomas, on Sept. 19, 2000. Heidi continues to work part-time from home.

**Ben (Kauna) Shingenge** has returned to the states where he assumes the role of diplomat at the Permanent Mission of the Republic of Namibia to the United Nations. Ben will reside in New York with his wife, Justino, and three children.

**Michael and Amy (Ledgerwood '92) Kim** announce the birth of Jacob (Coby) Tyler on Dec. 5. He joins Noah, 4, and Noomi, 2.



## 1992

**Darin Johnson** and his wife, Beth, along with their daughter, Alyx, and son, Dean, moved to Proctorville, Ohio. Darin works for Amazon.com in Huntington, WV.

**Brandon McDonald** and his wife, Tracey, announce the birth of Ethan Martin, on Oct. 12. Brandon continues to work at Crate and Barrel Furniture in Washington, D.C.

**Tracie (Bernklau) Henninger** and her husband, Mark, announce the birth of Nathan James, on Nov. 1. Tracie is a teacher in the Newberg (Ore.) School District.

**Brett Hortvigson** is a Lutheran Brotherhood district representative in San Diego. He recently qualified for membership in the 2000 Top Club, one of Lutheran Brotherhood's most prestigious honors given to district representatives who are successful in helping their clients link faith, values and finances.

**Brian Watson** has been enjoying his new vocation as a full-time artist since December 1999. In December 2000, he had a solo showing of his artwork at Collective Visions Gallery in Bremerton, Wash., and in May, he had another solo show at Westsaud Bank, also in Bremerton. Brian has been married to Elizabeth Roberts for more than six years.

www.collectivevisions.com



**Angie (Saylor) Rutherford** and her husband, Jace, announce the birth of Jacob Isaiah, on Feb. 9. Angie is a stay-at-home mom.

**Tim Mitchell** was promoted to accounting supervisor at RREEF Management in March.

**Tracy (Wensel) Mitchell** received a Pharm.D. from the University of Washington and accepted a position in the pharmacy at Swedish Medical Center in Seattle.

**Jun Chea** and his wife, Jeannie, announce the birth of Isaiah, on Jan. 23. He joins Faith, 3. Jun is a vice president at Key Bank in Tacoma.

**Jennifer Nelson** and Bruce Ritchie were married on Nov. 11 in Edmonds, Wash. **Elizabeth (Hartmann '92) Schwerdt** was the maid of honor and **Marie Brice '92** was an attendant. Jennifer is a legal assistant in criminal records at the King County Prosecutor's Office and Bruce is a warehouse supervisor at NC Machinery. They live in Auburn.

## 1993

**Jenny Berk** and Alex Hoffner were married on Dec. 9 at the Lutheran Theological Southern Seminary in Columbia, S.C. Jenny is the director of youth and church growth at Our Saviour Lutheran Church in Johnson City, Tenn. Alex is a fourth year seminarian at Southern Seminary.

**Kriston (Miller) Ashbridge** and her husband, Tyler, announce the birth of Maxwell, on Sept. 20.

**Kevin Winder** is a Lutheran Brotherhood district representative in Salem, Ore. He recently qualified for membership in the 2000 Leaders Club, one of Lutheran Brotherhood's most prestigious honors given to district representatives who are successful in helping their clients link faith, values and finances.

**Sam Capps** is a Lutheran Brotherhood district representative in Seattle. He recently qualified for membership in the 2000 Leaders Club, one of Lutheran Brotherhood's most prestigious honors given to district representatives who are successful in helping their clients link faith, values, and finances.

**Stefan Damstrom** and his wife, Melissa, announce the birth of their son, Kai Anders Stuart, on March 13.

**Kristina (Kurle) Dolan** and her husband, Stein, announce the birth of Paige Mary-Elizabeth, on Dec. 18.



## 1994

**Heather (Carlson) Wheeler** and her husband, David, announce the birth of Hannah Ruth, on April 25, 2000. Heather completed her residency in family medicine in June and David is a pharmacist at Holy Family Hospital in Spokane.

**Tracy Perry** was a cast member in the musical, "Titanic," at the Civic Light Opera of South Bay Cities in Redondo Beach, Calif., during March.

**Tracy Kramer** has a new job as program manager at Aging and Adult Services in Olympia. She works with the training, communications and development unit.

**Val and Kristine (Johnson) Meyer** announce the birth of Jessica, on May 7, 2000. Kristine is taking time off from her fifth-grade classroom to stay at home with Jessica. Val will graduate this summer with an MBA from Seattle University. He recently joined Washington Mutual's mergers and acquisitions group.



**Micah and Julie (Thompson '96) McBride** live in Olympia where they just bought their first house. Julie is a school counselor in the Tumwater School District and Micah is a teacher in the North Thurston School District.

## 1995

**Doug Nicholson** and his wife, Susan, announce the birth of Kyle Douglas, on Feb. 1. He joins Kaitlyn, 2.

**Karen Frank** and John Goebel were married on Dec. 30. Karen is a certified registered nurse anesthetist at Johns Hopkins Bayview Physicians and John is the director of research at Higher Education Consulting.

**Kerri Schroeder** and her husband, Lance, announce the birth of Connor Daniel, on Nov. 27. He joins Brandon, 2. Kerri is the vice president of commercial lending at Bank of America in Bellevue, Wash.

**Robyn (Guntrip) LaChance** was promoted to director of marketing at Woodstone Credit Union in December. Her husband, Peter, is a team manager for government computer sales.

## 1996

**Shane Row** is pursuing a professional certificate at the Drummer's Collective in New York City where he lives with his wife, Erica.

**Rebecca (Bjork) Willman** and her husband, Christopher, announce the birth of their son, Quinn, on May 10, 2000. Rebecca is a voice teacher and Christopher is an engineer.

**Jenna Edlund** moved to Northern New Jersey, about 20 minutes outside of New York City, on Jan. 1. She was promoted to product marketing manager within Intel's Telecommunications Division of Dialogic.

**Gregory DeJardin** and Kelly Fredrickson were married on May 12, 2000 at First Baptist Church in Tacoma. **Rod Nash '96, Ryan McDonald '95, and Tracy DeJardin McDonald '92** were

attendants. Gregory is a teacher with Upward Bound for the Metropolitan Development Council.

**Lisa Balmes** is working in corporate human resources at Nordstrom. She was previously with the Seattle Seahawks.

**Rob Koll and Melissa (Missy) Davis** were married on Aug. 19 in Portland, Ore. **Scott Erickson '95, Erik Manick '96, Mike Liefeld '96, Kristen Summers '97, Jana Stott '98, Marci (Voeller) Bartholomae '98, Bobbi (Junell) Crist '98, and Karen Koll '93** were attendants. Rob is a network administrator for BEST Consulting of Kirkland, Wash., and Missy works as a nurse at Tacoma General Hospital in the neonatal intensive care unit. The couple lives in the Wallingford neighborhood of Seattle.

**Erika Richardson** and Luis Valdivia were married on Feb. 10 at Victory Harvest Church in Baton Rouge, La. **Ali Lauer '96, Hillary Carlson '96, and Kay Van Gohren '95** were in the wedding. Erika is the human resource specialist at the Safety Council of the Louisiana capital area. Luis works in construction and as a mechanic. Luis and Erika live in Baton Rouge and will soon travel to Danli, Honduras to visit Luis' family.

**Erika (Wood) Row** is working towards her master's degree at Mannes College of Music in New York City where she lives with her husband, Shane. She made her Mannes debut as Suor Genovieffa in Puccini's Suor Angelica and recently performed in a master class given by Renata Scotto.

**Mona Aboel-nil** is in her ninth year of teaching secondary level science. She lives in Seattle and teaches biology at Kent-Meridian High School in Kent, Wash.

## 1997

**Erica (Wood) Row** is working towards her master's degree at Mannes College of Music in New York City where she lives with her husband, Shane. She made her Mannes debut as Suor Genovieffa in Puccini's Suor Angelica and recently performed in a master class given by Renata Scotto.

**Erica (Wood) Row** is working towards her master's degree at Mannes College of Music in New York City where she lives with her husband, Shane. She made her Mannes debut as Suor Genovieffa in Puccini's Suor Angelica and recently performed in a master class given by Renata Scotto.

**Silas and Cindy (Andrew '96) Bowman** announce the birth of Sarah Michelle, on Jan. 26. She joins Andrew, 2.



**Tayah Lin (Rathje) Butler** is working on her MBA while working for PLU. Her husband, Rodney, will start his undergraduate work in the fall, after serving five years in the U.S. Army.

**Anneliese Gorne** received her law degree from the University of Washington in June 2000. She passed the Washington state bar exam during the summer and works at Insee-Best in Bellevue, Wash.

**Susan Wagener** received a master's degree in biomedical engineering from the University of California, Davis in June 2000. She is now working at ICON Clinical Research in San Bruno, Calif.

**Kim Schelin** and her husband, Todd, announce the birth of Payton Catherine, on Feb. 6. She joins Taryn, 2. Kim is the event coordinator for Multicare Healthworks in Tacoma.

## 1998

**Arild Lovaas** left his position as an investment adviser in May 2000 to become head of accounting for Score AS, a Scottish company that provides total value management for offshore installations in the North Sea.

**Allyson Weld** and Arik Tedrow were married on Aug. 27 at Indian Summer Golf and Country Club in Olympia. **Shannon (Robinson) Thompson '98** was a bridesmaid. Allyson is a substitute teacher in the Spokane Valley and Arik is an engineer in sales at Siemens Building Technologies. Allyson previously taught physical education at Timberline High School in Lacey, Wash.

**Erin Romine** and Andrew Albaugh were married in May 1999 and moved to Boston, Mass., where they volunteered with Americorps in an inner-city intergenerational program, Generation Inc. They are now working toward master of arts degrees in teaching at PLU.

### OFFICIAL BALLOT

## 2002-03 Alumni Award Nominations

The PLU Alumni Association encourages alumni, friends and students to submit names of persons to be considered for awards recognizing their contributions to the university or their community.

### Distinguished Alumnus Award

Through years of dedication and service, this alumnus has achieved professional or vocational distinction.

YOUR NOMINEE

### Outstanding Alumnus Award

Award to an alumnus, beyond 15 years of graduation, who has excelled in a special area of life.

YOUR NOMINEE

### Outstanding Recent Alumnus Award

Award to an alumnus, within 15 years of graduation, who has excelled in a special area of life.

YOUR NOMINEE

### Alumni Service Award

Awarded to an alumnus who has demonstrated outstanding volunteer leadership and/or service to the community.

YOUR NOMINEE

### Heritage Award

Awarded to an alumnus for years of distinguished service to the university.

YOUR NOMINEE

### Special Recognition Award

Awarded to an alumnus or friend of the university who has uniquely served the university.

YOUR NOMINEE

YOUR NAME

ADDRESS

CITY/STATE/ZIP

PHONE

In order to be eligible, nominations must include supporting letters or documentation, and be returned to the Office of Alumni and Parent Relations by Friday, Dec. 28, 2001

MAIL TO: Office of Alumni and Parent Relations, PLU, Tacoma, WA 98447-0003

**DUE DATE: FRIDAY, DEC. 28, 2001**

**Jacqueline Harman** starred in the Broadway Center for the Performing Arts production of *Blackbird Singing*, a one-woman show that celebrates the legacy of African-American divas and their contribution to opera music. It toured Tacoma and Seattle middle and high schools, stopping at PLU in March. Jacqueline is also the administrative assistant at The Wood Products Consortium and The Engineered Wood Research Foundation.

**Wendy Rygh** and her husband, Mark, announce the birth of Megan Jo, on July 26, 2000. Wendy is working on her master's degree in teaching at George Fox University.



**Matt Iseri** was promoted to senior consultant at Cap Gemini Ernst.

**Nathe and Alicia (Manley '98) Lawver** announce the birth of Abigail Anne Marie, on Nov. 18 at home in Tacoma. Nathe is working at Northwestern Mutual Financial Network and Alicia is a full-time mom and part-time copy editor for The Olympian newspaper. They live in Tacoma's North End neighborhood. [lawvern@wwdb.org](mailto:lawvern@wwdb.org)



**Sara Reibel** and Aaron Locke were married on Sept. 2. Sara is a special education teacher in the Puyallup School District and Aaron is a software support specialist.

## 1999

**Bonnie Hoarnstra** is a high school Spanish and history teacher and ASB adviser at Life Christian Academy.

**Lori Johnson** and Royce Cannon were married on July 15, 2000 in Federal Way, Wash. Lori is a teacher for the Department of Defense at Seoul (Korea) American Middle School and Royce is a para-educator.

**Wally and Corina (Wynn) Sims** announce the birth of Megan, on Dec. 23. Wally and Corina are medical students at Flinders University School of Medicine in Adelaide, Australia.



## 2000

**Carolyn Cichanski** is a research coordinator at the University of Washington.

**Vanessa Kramis** is a Suncore sales representative for South Beach Sun.

**Jennifer Richards** and Avery Kerr were married on June 17, 2000 in Hillsboro, Ore. Jennifer is a registered nurse at the Avalon Clinic in Lakewood, Wash., and Avery is a U.S. Army Ranger. **Andrea (Anderson) Stevens '99** was the maid of honor. Drew Melton, son of Ordal Hall's past resident director, was the ring bearer.

**Erik Wells** and his wife, Cara, announce the birth of Ethan James, on Jan. 26.

**Veronica Paulson and Jason Kaipainen '99** were married on Oct. 7 in Tacoma. Veronica is the lead teacher at Immanuel Preschool and Jason is a web developer and graphic designer for LaborReady at corporate headquarters in Tacoma.

**Scott Schuler** is a financial consultant at Merrill Lynch in Tacoma. He received his certification as a financial manager on March 30.

**Sara Simpson** and Courtney Drebes were married in September at St. David's Episcopal Church in Shelton, Wash. Sara is a charge nurse at Western State Hospital in Steilacoom. They are living in Olympia.

**Jennifer Vredenburg** is the new recreation manager for the Franklin Pierce School District. She manages the sports program at the Summit-Parkland Youth Association.

## AUTHOR'S BOOKSHELF

1985

**Tim Rundquist** is the author of a newly-published "travel novel" about Alaska, titled "How Heavy Is The Mountain." The book is based on his eight seasons as a professional tour guide in Alaska and the Yukon Territory during the 1980s and 1990s. It is available online at Barnes and Noble ([bn.com](http://bn.com)), Amazon.com, other Internet retailers and at the PLU Bookstore.

## in memoriam

1936

**Laura (Hauge) Adams** died on Feb. 27.

1940

**Dennis Gallagher** died on Sept. 28.

1941

**Lenore Taylor** died on Jan. 28.

1943

**Harold Peterson** died on Jan. 27.

**Rolv Schillios** died on Oct. 2.

1949

**Helen (Jensen) Weathermon** died on Feb. 6.

**Horace "Jerry" Westberg** died in December.

**Alvera (Johnson) Westberg** died on Feb. 27.

1950

**Jacqueline (Stephenson) Holt** died on Jan. 22.

1958

**Eileen (O'Callaghan) Myers** died on Jan. 31.

1964

**Jeanne (Ogden) Nalbach** died on Jan. 30.

1973

**Evelyn P. (Peers) Bowen** died on Jan. 8.

1975

**Daniel Eum** died on Jan. 9.

**Carol (Sanders) Smith** died on Dec. 17.

1978

**Sharon Ganser** died on Dec. 7.

**Linda Dyer** died on Dec. 10.

1983

**Todd Baxter** died in May 2000.

**Kris Geldaker** died on March 20.

## FACULTY AND FRIENDS

**Gary Peterson**, math professor emeriti, died on March 1. Professor Peterson taught in the math department from the late '60s to the mid-'90s. He graduated from Iowa State University, completed his master's degree at Western Washington University and received his doctorate from the University of Kansas in 1972. He is survived by his wife, Kathleen; daughter, **Christine '93**; and two grandchildren.

PLU mourned the loss of freshman **Monica Lightell** of Steilacoom, Wash., who died Feb. 25 when a deck collapsed at an off-campus party. Several other students were injured.

Monica was a member of the PLU crew team and worked in the Counseling and Testing office.

She was born Dec. 29, 1982, in Monterey, Calif. She grew up in Panama and attended the International School of Panama. A 2000 graduate of Steilacoom (Wash.) High School, she was president of the International Club and lettered in volleyball and javelin.

About 1,500 people attended an on-campus celebration of Monica's life. PLU President Loren J. Anderson urged the PLU community to remember her gifts and to turn to God to cope with their grief.

An endowed scholarship fund was established in her name.

To find out more about the Monica Lightell Scholarship Fund, and to read the address from the memorial, go to: [www.plu.edu/encore](http://www.plu.edu/encore).

## ALUMNI PROFILE

# Phyllis Cavens '61 serves as a doctor to the world

BY LAURA GIFFORD '00



**A LIFE OF SERVICE:** Dr. Phyllis Cavens '61 comforts a child in Somalia during a 1992 visit to the war-ravaged nation. This photo appears in "Being a Pediatrician," (Lake Publishing, 2000), a book written by her husband, Dr. Travis Cavens.

In 1979, after a decade of closed borders, repression and systematic killings, news of Cambodia's "Asian Holocaust" leaked to the international media—and hundreds of thousands of refugees began streaming into Thailand by any means possible.

First lady Rosalynn Carter paid a visit to refugees in Sakeo, a Thai border camp. The desperate needs she outlined in a Time magazine cover story prompted a Portland, Ore. businessman, Ron Post, to call a press conference discussing the refugee problem and calling for volunteers for a new relief organization.

Dr. Phyllis Cavens '61, a pediatrician in the southwest Washington town of Longview, read the article and heard Post's press conference. Within two weeks, she was on a plane to Thailand, and her 22-year association with the newly formed Northwest Medical Teams had begun.

Since 1979, Cavens leaves her pediatric practice in Longview to make war and disaster relief visits to Ethiopia in 1985, Somalia in 1992, Honduras in 1998 and multiple trips to Mexico and other areas where Northwest Medical Teams has ongoing programs.

"Basically, the international relief response begins as soon as CNN tells us there's a problem," Cavens said. When Hurricane Mitch ravaged Honduras, Cavens was there within a week.

Once in a country, Cavens' disaster relief team coordinates with local agencies to determine which areas are hardest hit. After traveling to those areas, Cavens and her fellow workers make contacts with local officials.

Many of the cases Cavens sees while on a war or disaster relief mission are directly tied to the disaster at hand. In Honduras, for example, she treated pneumonia in people who had lost their homes, diarrhea from contaminated water and sores on the legs and feet of children who walked barefoot through bacteria-laden mud after sewage systems flooded.

"The solution for diarrhea costs 10 cents," Cavens said. "For pneumonia, we use penicillin—under 50 cents a shot. Very inexpensive medicine can do a lot. It can save a life."

In addition to disaster-related ailments, however, Cavens sees dozens of children whose basic health needs have not been met. In Honduras, a mother brought her 10-month-old daughter to Cavens for an examination. One of the girl's pupils was completely white. Cavens knew the child was suffering from retinoblastoma, or cancer of the eye, and needed an operation to save her life.

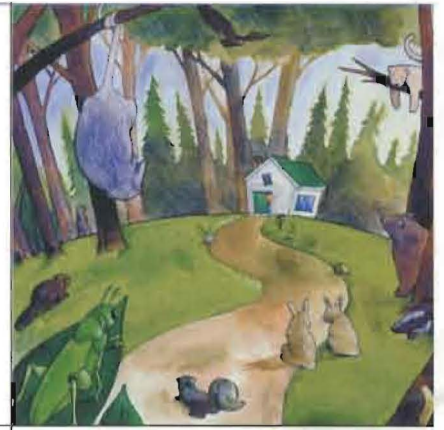
Because Northwest Medical Teams had already made contacts with local officials, Cavens was able to coordinate additional assistance through a Catholic priest in Morazan. After Northwest Medical Teams left, the girl and her family were transported to the Honduran capital by Caritas, a Catholic relief agency. The agency flew in an American surgeon to remove the cancerous eye, saving the little girl's life.

"That's really why I keep going," Cavens said. "There's so much acute need in these situations that without care, children will die. Just being there and being a pediatrician can save a life."

# perspective

## Bivens '85 blends environmentalism & fun with children's illustrations

Zack peers out of his house to see his furry neighbors.



Christopher Bivens '85 shows off his latest book at his Dream Factory Books studio in Enumclaw.

**C**hristopher Bivens '85 has worked his way into the hearts of children and environmentalists with two new books featuring his whimsical artwork.

Bivens, who earned a bachelor of fine arts degree, has illustrated two children's books that combine a fun story with practical tips about protecting the environment. Written by his

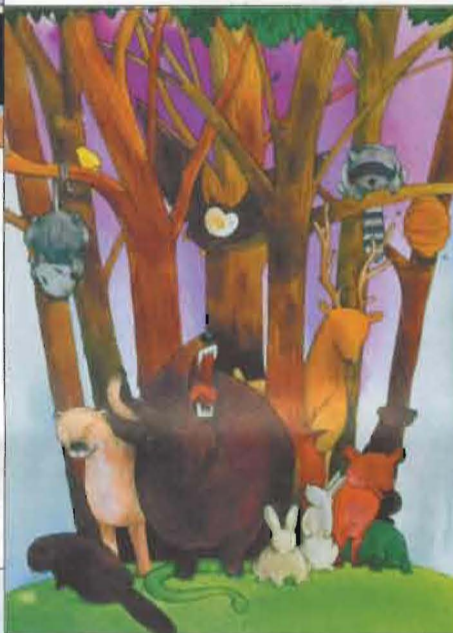
The latest books aim to teach children and families how people and wildlife can live peacefully together. Both are published by Dream Factory Books in Enumclaw, owned by Sensel and Bivens.

"The plan is to be largely environmental and educational," Bivens said.

"Bears Barge In" features a boy named Zack who lives in the forest along with bears and other wildlife. Zack's human neighbors multiply, and he must find a way to make room for both.

"The Garbage Monster" brings recycling to life and explores conservation on a scale young children can relate to. When young Jo is slow to take out the garbage one night, the trash comes to life and takes her out instead. She takes the monster apart, finding uses for all his parts and showing readers resourceful ways to recycle.

Both books are available at [dreamfactorybooks.com](http://dreamfactorybooks.com), or [amazon.com](http://amazon.com), and at area bookstores.



RIGHT: Bivens' books feature a cast of animal characters. BELOW: From "Bears Barge In," Zack wakes to find a passum before his eyes.

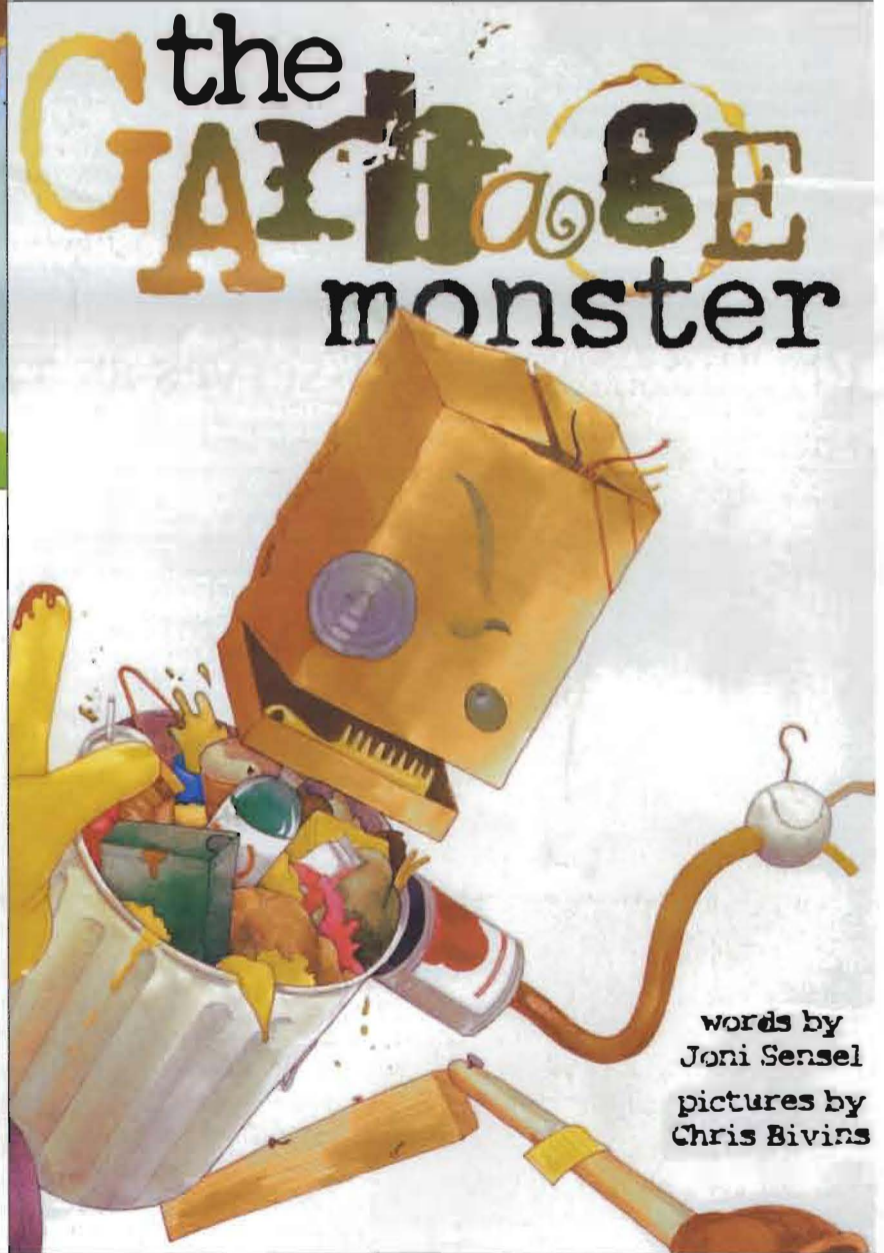


wife, Joni Sensel, "Bears Barge In" and "The Garbage Monster" were released in April in conjunction with Earth Day.

Bivens has worked as a designer and illustrator for many corporate clients, including Weyerhaeuser, AT&T Wireless, REI and the National Park Service. He handled the design and layout of PLU's Business Scene for several years before and after graduation and lent his creative mind to other PLU projects. Illustrating children's books gives him a chance to be as creative as he wants with no restrictions.

"It's pretty much all mine," he said. "I get to figure out what it's going to look like, and I do it. It's just more fun than corporate work."

Bivens worked in watercolor and colored pencil for both books. He also illustrated "The Perfect Tree" in 1990.



words by  
Joni Sensel  
pictures by  
Chris Bivens



PACIFIC LUTHERAN UNIVERSITY  
Tacoma, Washington 98447-0003

If this copy of Scene is addressed to your son or daughter who no longer maintains a permanent address at your home, please notify the Office of Alumni and Parent Relations with his or her new mailing address. You can reach us by phone at 253-535-7415, or 1-800-ALUM-PLU, fax us at 253-535-8555 or email [alumni@plu.edu](mailto:alumni@plu.edu) with the new information. Thanks!

\*\*\*\*\*5-DIGIT 98444  
0000019915 21475 254  
MS. KERSTIN E. RINGDAHL  
11812 PARK AVE S  
TACOMA WA 98444-5236

