

11 Compete Tonight For Lucia Bride Title

By Barbara Leaf

An old tradition will be revived tonight at 8 o'clock when Pacific Lutheran College's "Lucia Bride" comes up the aisle of the Student Union to take her place at the royal throne. She will be robed in white and her crown will be of candles to symbolize the "Light Festival."

A program has been planned in "Lucia's" honor by Lucille Lentz. Performing for Lucia will be Connie Fuller and many other talented PLC students.

Among the candidates who are hoping to become "Lucia Bride" we have:

Diane Bassett, sophomore from Tacoma, who is sponsored by the Alpha Phi Omega.

Jane Gildaker, sophomore from Portland, Oregon, who is representing the sophomore class.

Gloria Kvinge, a junior who hails from Seattle. Gloria is the candidate for the junior class.

Alta Prestbye, a junior from Kallispell, Montana. She is sponsored by Blue Key.

Eunice Siverson, a sophomore from Antioch, California, sponsored by the Viking Club.

Carol Falk, a freshman from Kennewick, Wash., is representing the freshman class.

Judy Bureker, a freshman from Eugene, Oregon, is being sponsored by the Associated Women Students.

Martha Coolick, a senior from Tacoma, is representing the Future Teachers of America.

Mary Ann Richardson, a freshman from Parkland, is being sponsored by Delta Rho Gamma.

Charlotte Brandt, a senior, is the Linne Society's candidate and Ann Nielson, a freshman from Seattle, is representing the Nurses Club.

Voting on these candidates was held on Wednesday and Thursday but results will be secret until the festival tonight.

Patio To Cost Six Thousand

Six thousand dollars is the sum that backers of the student lounge-patio project hope to attain, John Rydgren, associated student body president, recently announced.

"The Class of 1951 may make some contribution," he said, "and there might possibly be something about a joint action with the Saga carnival."

A fund-raising campaign among the students is being planned and there has been some indication that the senior class will donate a sum of money.

The lounge would be built off the south end of the Student Union building and contain an indoor barbecue, folding picture windows, a fireplace, and an outdoor patio.

A drawing of the lounge is on display in the front hall of Old Main and the project will be discussed further during the student body meeting Tuesday morning.

Innocent freshman: Could you learn to love me?

Unattached sophomore: I might. I learned to like spinach.

WAA Will Sponsor Ice Skating Party

The Women's Athletic Association is sponsoring an ice skating party Saturday night, December 5, from 10:30 to 12:30, according to Kathryn Biery, president.

"The whole school is invited to come for an evening of fun. The place is the Lakewood Ice Arena and the price is 50c per person," she said.

"Ministry is the highest calling in the world."—Dr. C. Koosmann.

14 Seniors Chosen For Collegiate 'Who's Who'

By Jo Hanssen

Fourteen Pacific Lutheran College seniors were chosen to be included in "Who's Who Among Students in American Universities and Colleges," Dean Philip E. Hauge disclosed this week. The publication is an annual list of the outstanding senior students in American institutions of higher learning.

The faculty made the choice, basing their decisions upon excellence and sincerity in scholarship, leadership and participation in extra-curricular and academic activities, citizenship and service to the school, and promise of future usefulness to business and society.

The students chosen are:

Priscilla Asper — Linne Society vice-president 3, Tassels president 4, band secretary-treasurer 2-3, chorus vice-president 3, junior class treasurer 3, AWS Council 4.

John P. Carlstrom—ASB treasurer 4, Ski Club president 1, vice-president of Ivy Hall 2, junior class vice-president 3, Drama-Music Festival art exhibit director 4, Campus Devotions 3-4.

Janet Carson — Spurs secretary and junior advisor 2, Student Congress 1-2-3-4, sophomore class treasurer 2, delegate to Spurs' national convention 2, delegate to WEA state convention 4.

Edith Engel — Student Congress 1-2-3-4; director 4, Pi Kappa Delta secretary-treasurer 4, Alpha Psi Omega president 4, Omnibus of Arts director 3, Tassels 4.

Jeannette Foss—Mu Phi Epsilon president 3-4, Tassels vice-president 4, Spurs 2, Chorus accompanist 3-4, Lutheran Daughters of the Reformation 1-2-3-4.

Joyce Genz — Organ Guild vice-president 1, Spurs president and delegate to national convention 2, sophomore Inter-club Council representative 2, co-chairman of Saga Carnival 3, co-chairman of Homecoming 4.

Kathleen Hinricks—Curtain Call president 3, Tassels vice-president 4, Future Teachers of America secretary 4, junior class secretary 3, AWS publicity chairman.

Glenn Johnson — Curtain Call president 2, Alpha Psi Omega treasurer 3, junior representative to Student Council 3, ASB vice-president 4, Blue Key 4.

Donald Keith—French Club president 1, Linne Society president 3-4, Blue Key president 4, freshman class president 3.

Janet Klippen—American Chemical Society vice-president 4, secretary 3, Pi Kappa Delta vice-president 4, German Club secretary 4, Student Congress chairman 3, Debate 1-2-3.

John Osburn—Mooring Mast editor 3, Pi Kappa Delta president 4, Debate 1-2-3-4, sophomore class president 2, Blue Key 4.

John Rydgren—ASB president 4, radio announcer 1-2-3, Curtain Call president 2, representative to Alumni Board 2-3, Student Congress 2-3-4.

Joanne Schief—Mooring Mast editor 1, Pi Kappa Delta secretary-treasurer 3, Lutheran Daughters of the Reformation president 3, Debate 1-2-4, Organ Guild 1-2-4.

Richard Stuhlmiller — Lutheran Students Association treasurer 2, sophomore class president 2, Student Council 1-3, ASB treasurer 3, Toastmasters 3-4.

Confirmation Class Receives Communion

By Joan Kittelson

This coming Sunday, at 7:30, the eleventh PLC confirmation class under the direction of Professor Kelmer Roe will receive their first communion. The ceremony is to take place in the Trinity Lutheran Church Chapel with Doctor Eastvold presenting the sermon. Anyone who wishes to attend may take part in the Lord's Supper with the confirmants. A reception is to follow in the Friendship room of the Parish House, directly after the service, when Mrs. Roe and Miss Anne Knudsen will be the hostesses.

The group to be confirmed is composed of five PLC students and one other. They are Kathryn Chase, Joan Ellertson, Donald Goddard, Joanne Swartzwalter, Janie Wilson and Mrs. Barbara Rosenboom. "This has been an extremely eager group to conduct," said Pastor Roe. "They were so eager that they arranged for an afternoon period of discussion which lasted two hours, besides an extra evening class this week." This class was begun September 29 and they have had 12 meetings which were held at Roe's home on Tuesday nights.

Beginning in October of 1948, there have been two classes a school year. 116 have been confirmed and of this group 45 have been baptized. The classes have varied in size from five to seventeen members, with the spring enrollment usually the largest. There are from 10 to 17 meetings a term, depending on the class.

When asked how the classes are assembled, Professor Roe said, "How do these classes gather? (For

(Continued on Page Four)

Curtain Call Club to Produce Dickens' "Christmas Carol"

By John Shannon

Another of Pacific Lutheran's greats will take place on December 16, as Curtain Call Club, campus dramatic society, presents the annual "Christmas Carol," a well-known play by Charles Dickens.

One performance will be given, on the stage of the Chapel-Music-Speech building, directly following the Christmas banquet. Proceeds will be donated to charitable organizations.

PLC Debators Place Highly

Pacific Lutheran College debators won one of the sweep-stake trophies and 15 berths in the final round of the Western Speech Association tournament at Fresno, California, November 23-25. The PLC team of four men and four women competed with 400 students from 52 colleges and universities, in 11 western states.

Janet Carson was first in senior discussion, and Joann Schief took second place. Miss Schief won first place in senior extemporaneous speaking; Joyce Genz was fifth.

A team composed of John Osburn and Eugene Perry won their way into the elimination round of senior men's debate before they were eliminated. Osburn also made the semifinals in interpretive reading and extemporaneous speaking.

"One of the things that I thought made the tournament more interesting, was the fact that PLC returned to a position of power on the west coast," Osburn said.

In senior interpretation, Edith Engel took second place honors; Misses Carson and Schief tied for fifth.

David Hestenes took fourth place

(Continued on Page Four)



PLC LUCIA BRIDE CANDIDATES—Balloting is taking place at Pacific Lutheran College Wednesday to select one of the girls to reign over the Lucia Bride festival at the college Friday evening. Left to right the coeds are: Alta Prestbye, Kallispell, Mont.; Char-

lotte Brandt, Sheridan, Ore.; Ann Nielsen, Seattle; Carol Falk, Kennewick; Eunice Swenson, Antioch, Calif.; Martha Coolick, Tacoma; Gloria Kvinge, Seattle; Judith Bureker, Eugene; Janet Geldaker, Portland; Mary Ann Richardson, Diane Bassett, Tacoma.

The Mooring Mast

Published every Friday during the school year by students of Pacific Lutheran College.
 Entered as second class matter, October 2, 1952, at the Post Office at Parkland, Washington.
 Office: Student Union Telephone GRanite 8611
 Subscription price—\$1.50 per year.

EDITOR-IN-CHIEF.....JO HANSSEN
 NEWS EDITOR.....JOHN SHANNON
 FEATURE EDITOR.....BARBARA LEAF
 MAKE-UP EDITOR.....JOAN KITTELSON
 SPORTS STAFF.....TED SIEK, CATHERINE SANNERUD
 SPORTS WRITERS.....ROGER BJERK, DUANE BRANDT, DAN ROSE, WALLY BURTON.
 BUSINESS MANAGER.....MARY ALICE DREXEL
 AD MANAGER.....DONNA MILLER
 AD SOLICITORS.....BETTY SOINE, PEGGY HARPSTER
 REPORTERS.....DAVE NESVIG, DELORIS BECK, LOIS SAND, ANITA SCHNELL, NATHALIE HO, ED KENNEDY.
 CIRCULATION AND EXCHANGE STAFF.....JEAN COGBURN, LORIS ZELLMER, PHYLLISS CASPERSON, MAUDIE STRAUB, CAROL EDLUND, JANET GELDABER.

We Should Raise Polio Fund

Students in the nation's 1,800 colleges and universities who join the 1954 March of Dimes this January will be part of the largest polio fund raising drive in history.

According to Basil O'Connor, president of the National Foundation for Infantile Paralysis, an estimated 3,000,000 volunteers in all parts of the country will seek \$75,000,000 in voluntary contributions needed to finance the organization's new program of polio prevention and to support existing programs of research patient aid and professional education in 1954.

By allocating \$26,500,000 to polio prevention, the National Foundation moves from defense to attack for the first time since it was founded 16 years ago. Of the total, Mr. O'Connor said, \$7,500,000 will pay for mass testing of a trial polio vaccine and \$19,000,000 will provide more than 2,000,000 inoculations of gamma globulin.

Meantime, he continued, there will be no let-down in March of Dimes-supported research. Contributions from January 2 to 31 also will sponsor professional training of physicians, nurses and physical therapists in the latest treatments for polio.

In 1954, the National Foundation's patient aid program, which since 1938 has assured the best available medical care to polio victims, will continue to care for more than 66,000 carry-over cases in addition to assisting new patients.

Commenting on the 1954 gamma globulin and trial vaccine programs, Mr. O'Connor said:

"It must be remembered that polio prevention is a beginning program—not a finished one. Although our hopes are high, we cannot count on fewer cases of infantile paralysis in 1954 and must be prepared, as ever, to help all those who need assistance.

"Even if the vaccine tests are successful," he continued, "this cannot be known until after the next 'polio season,' so there will be no proven vaccine available in 1954. Gamma globulin, our only weapon at present, is a stopgap measure, offering only temporary protection. Therefore, although we are grateful there is something that can be used now to minimize or eliminate polio crippling, we know our job is far from finished. Long-term protection can be won only if the crucial nature of the period just ahead and provide the funds during the March of Dimes in January for the next, and, we hope, final steps to victory."

RON AND FUN CLUB

You've heard of the TVA and the CVA; well, I propose another project for the Department of the Interior. Since a great deal of opinion exists on campus concerning the student project, I believe I have originated a project that should be very popular.

A good many people desired a swimming pool, and others wanted a place at which they could have informal dates. I have included these two ideas, and also solved the bitter financial problem. If things were developed right, this would be one of the few colleges in the United States with its own private lake.

Since winter is approaching and water seems to be everywhere, my idea is very apropos. Of course, I expect a little plate to be planted near the project, designating me as the originator and designer. Above my name would be these four letters C.C.V.A., and that would be all. The Clover Creek Valley Authority, with headquarters at PLC, would soon be widely known throughout the country.

You are all familiar with that area located between the north side of the gym and the bank below the CMS. The Powder Puff game was played there, and a sidewalk runs through the middle of it. My proposal is to construct a concrete levy at the west end of this particular area, running from the gymnasium to the bank. Within a few months, water would be eight to ten feet deep all over that area.

A dock could be constructed, extending out into the lake some 75 feet, with a concession stand and numerous benches at the end of it. This would also provide more student employment. Ten or fifteen boats or canoes could be purchased, and rented to students only. They could be rented by the hour. This takes care of the informal dating problem.

During the spring, diving boards could be erected, and swimming would certainly be very popular. Also, the Washington State Game Commission would assuredly be more than glad to plant the lake with rainbow trout. Boats could be rented to local fishermen and students, and thus eliminate the financial problem.

During the winter, the lake would probably be frozen over. Thus, ice skating would be a popular pastime, and skates could be rented and defray costs even more.

This is only an idea by this writer, but I rather like it. If any of you readers would like more details, this writer would be glad to elucidate further.

WANT AD

For Sale: Two police puppies. Prize-winning parents. Both male.

Band Will Give Concert At Rainier School

The college band, under the direction of Dr. Larson, will present a concert at the Rainier State School for mentally retarded at Buckley on December 8. This is the third annual concert the band has presented at the hospital. The hour-long program consists of various Christmas selections and some classical numbers.

Overheard: In marriage, like boxing, the preliminaries are often more entertaining than the main event.

Reply to 'Ron and Fun Club'

By Arlene Dow

Not meaning to disprove your recent brainstorm, but—does it sound very feasible to call your little project CCVA? What about calling it ILIA (Ivy League Improvement Association)? I think that Ivy Hall has done quite a bit to improve lower campus.

I can see it now, the Ivy Hall girls shelling out a quarter every morning to paddle over for breakfast. Of course, since Ron is the chief originator, designer, etc., he could arrange to man the oars himself.

Another point: If the proposed lake is ten feet deep and it freezes about once every four years... ice skating—HA HA!!

Yes, water does seem to be everywhere, even on a few brains. One must admit that even with the help of the Johnson lode it would be difficult to flood the Mall.

Scene a few years from now: An enormous concrete monstrosity sitting high and dry above an infinitesimal little puddle. A sign sticking out of the mud with this legend written upon it: PLEASE DO NOT PET THE PROTRUDING BACKS OF THE PRECIOUS PLC FISH. Above the Strunkian nightmare will rise a monument dedicated to the genius who created this Okefenokee No. Two.

Now I am not personally prejudiced but even for an idea this seems far-fetched. I realize that the government has set quite a few projects, but for a private lake for PLC I have my doubts.

Boy Scouts Are Sought

The Mooring Mast is cooperating in an initial survey to locate all former scouts and scouters of the Pasadena-San Gabriel Valley, California, Council, Boy Scouts of America.

The purpose of this survey is to measure, through a subsequent questionnaire, the benefits a boy receives in his earlier scouting years as measured by advantages gained in adult life—because of his Scouting experiences.

This is the "follow-through" on everything the Boy Scout program was intended to accomplish and the findings compiled will be turned over to the National Council.

All former scouts and scouters effected by this initial survey are requested to send their name, present address and former troop affiliation at once to: Matt Grandon, Survey chairman, Boy Scouts of America, P. O. Box 3033A, Pasadena 3, California.

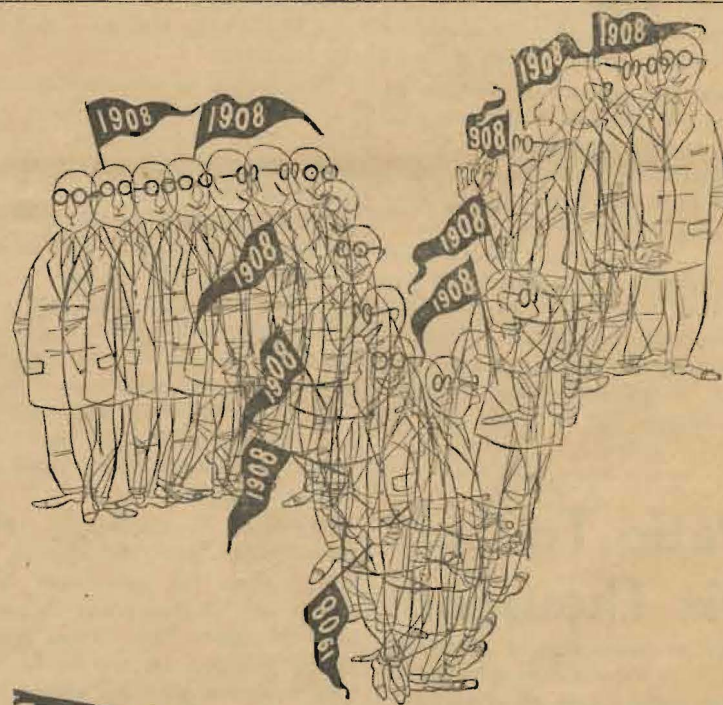
ART'S SHOE SHOP

Garfield Street

QUALITY REPAIRING - DYEING

Centre Cleaners

Parkland Centre



When you pause... make it count... have a Coke



BOTTLED UNDER AUTHORITY OF THE COCA-COLA COMPANY BY

COCA COLA BOTTLING, INC., TACOMA, WASH.

"Coke" is a registered trade-mark.

© 1953, The Coca-Cola Company

Late Model UNDERWOOD Typewriters FOR RENT
 SPECIAL STUDENT RATES
 Underwood Corp.
 1610 Center St. MA 4801

Parkland Jewelers
 CHRISTMAS GIFTS for the whole family
 E. L. GABLE, Prop.

Clothes Need Cleaning? . . . Bring Them To
PARKLAND CLEANERS
 11004 Pacific Avenue GRanite 3221

LUBRICATION BRAKE SERVICE
DILLINGHAM'S RICHFIELD MOTOR TUNE-UP
 GARFIELD & PACIFIC PARKLAND

Squad Leaves For Kennewick

The PLC basketball squad will be off to the wars this week as they travel to Kennewick to play in the Columbia Shrine Club tournament starting Friday night.

Four teams will be present in this fray. The Lutes meet Whitman in the opener while Whitworth and Central Washington battle in the other game. The winners of Friday night's games will tangle Saturday night, while the losers battle it out in the consolation game.

Marv Harshman isn't sure of his starters yet, but it is probable that Bob Ross, Garnet Lund and Phil Nordquist will be up front while Don Koessler and Vern Hanson, or Ron Billings and Al Gubrud will guard the back court.

Others from whom the 12-man squad will be chosen include Jim Ball, Larry Eggan, Jack Hoover, Del Brown, Sam Gange, Lowell Hubble and Jack Sinderson.

This tournament will give the Lutes an opportunity to get ready for next week's heavy schedule. The Lutes play four home games, starting with Seattle U., who invades us Tuesday night; CPS Loggers Wednesday night, and Pacific U. Friday and Saturday nights.

Good luck, gang! Bring back a couple of victories to set the stage for the rest of the season.

News from the Bench

By Ted Siek

Parklanders and local fans will get a full dose of basketball next week when the Gladiators make a four-game home stand in the Memorial gymnasium at PLC.

First of the invaders to tangle with the Lutes will be the lean and lanky Seattle University Chieftains. Al Brightman, Seattle U. coach, has dubbed his team the "Stork Club." He can start a quintet averaging 6 feet, 6½ inches. This five would have 6-9 Pehanik at center, 6-8 Bob Godes and 6-4 Stan Glowaski at forwards, 6-4 Giles and Sanford at guards. Gone, however, are the famed O'Brien twins, mity-mites of basketball. Ed and John O'Brien were chosen on many All-American teams; John made first five on everybody's All-team.

Marv Harshman and Al Brightman, rival coaches of the game, have been teammates and opponents in the last ten years of Northwest basketball. They were opponents in the Northwest Pro Basketball League; Harsh played for the Tacoma Mountaineers in the winter of '45 and '46 and Brightman at that time played for the Seattle Athletics. Marv and Al teamed up on several local aggregations, which have gone under various names such as the Tacoma All Stars. Brightman's fine coaching record stands at 114 wins against 48 losses. Harshman in the same 5-year period has led the Lutes to 102 wins against 46 losses, without the help of the O'Briens. The PLC-SU contest should be one of the most colorful spectacles of the season. Seattle University is highly favored, but the Lutes have stunned the Chiefs in the past, spilling them 75-70 in 1951 and nearly upsetting them in a 65-67 game in '52.

On Wednesday night, the Loggers (CPS) roll into Parkland. They boast five lettermen, a 80-62 win over Seattle Pacific, and some good frosh players. After rest and classes on Thursday, the Lute squad takes on Pacific U. in a two-game series.

Congratulations to Ron Billings, who for the second year in a row was selected on the Little All-American dream team. This year Ron was placed at a halfback position.

Sidelights: PLC was selected as the site for the Evergreen Conference Track and Field meet to be held May 21 and 22. Tennis and golf teams in the league will also compete at the same time. One thing in the Lutes' favor this year is the fierce competition among the players to make the eleven man traveling squad. Harshman feels that some of his talented frosh might force him to leave a few lettermen home. He mentioned freshmen Jack Sinderson and Gail Bloom in this respect.

Marv Harshman on the Kennewick tournament: "On paper we will be the weakest ball club, but I'm sure we'll make a good showing."

Bob Marvanik on Kennewick tournament: "As an assistant to the chief, I'll string along with him and say I too think that the Lutes will make a good showing. A team is as good as its coach, and we have the best coach in the land. A team also responds to its rooting section, and if we have a large cheering section the boys might bring home the trophy."

Garnet Lund on the tournament: "We'll be playing some good teams over there and about all I can say is that we'll be in there trying all the time."

Lutes Win First Game of Season; Bellingham Loses by Four Points

The PLC basketball team, in their first game of the season, outscored the Western Washington five, 48-44, in a game at Bellingham. The Lutes were on the short end of the score for three quarters, but rallied in the final period of the game to gain the victory.

At the start of the contest, Garnet

Lund stepped into the center circle for the initial tip-off and Bob Ross, Vern Hanson, Don Koessler and Phil Nordquist took slowly, taking time to set up their shots, but missing a good percentage of shots. The Western Vikings led 11-9 at the end of the first, making use of Ron Billings, Lowell Haeffely, Larry Eggan, Al Gubrud, Sam Gange, Del Brown, Jack Sinderson and Jim Ball. The Vikings held at 21-17 edge when the half-time buzzer sounded.

At one time in the third period, the Western Washington bunch had a six point lead. Seconds after the fourth period started, Al Gubrud sank a long one to tie up it, 32-32. In a hectic see-saw last quarter, Ross dunked in a few lay-ins and free shots. Galen Reimer, the Vikings' stellar guard, was hitting from all over the court and he kept the Vikings in the game down to the final minute. The Lutes led by one and two points during most of the final quarter, and in desperation to get the ball, the Vikings fouled Koessler, Ross, Billings and Lund, repeatedly. These foul shots, 6 of them by Koessler, were enough to give the Lutes a hard earned victory.

Harshman was glad that he won, but he saw a lot of flaws in the Lutes' game. Bob Ross led the team with 15 and he was followed by Lund with 10.

Ron Billings Makes 'Little All-American' Squad Again

By Roger Bjerk

It is said that history repeats itself, and in this instance it has. Ron Billings has achieved the honor of Little All-American on the Associated Press Little All-American squad for the second time.

This honor bestowed upon Ron did not surprise many of us, for we

tions with 21, in touchdowns with three, and led the team in pass interceptions with five. His rushing average was 3.6 yards per carry and his kickoff returns averaged 21.6 yards.

These statistics speak for themselves, but there is more to being an All-American than just being a great performer. It takes guts, perseverance, fight, and the will to win. Ron has all these qualities and even more. He is a fine field general, a great competitor and a great all around guy.

Ron Billings isn't the first All-American from PLC—Marv Tommervik, Rick Daniels and our present football coach, Marv Harshman, have received this honor.

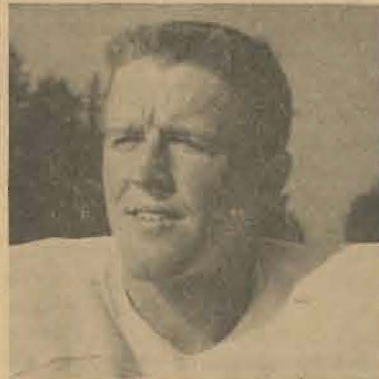
When the Mast interviewed Ron he had these comments to make: "Of the positions I played I liked the backfield the best."

"Play football in the service? I think not; I guess my football days are over."

He said the most thrilling game he ever played in was the Whitworth game this year. A close second was the CPS game last year.

Although his football days are over he has basketball and baseball yet to play, and in these sports he will continue to display his fine competitive spirit.

Our hats are off to you, Ron Billings, to a great football player and a great guy.



RON BILLINGS

felt he deserved it, but Billings was more surprised than anyone.

As everyone knows, only great players, the best, gain such recognition in the annals of football. It is only right that we acknowledge him as one of the best in college football this year.

Last year Ron was also picked on the Little All-American list. He gained this recognition by his fine defensive play in the Lute backfield. He intercepted twelve passes, which is just one short of the national collegiate record set by George Show of Oregon in 1951.

That achievement alone showed that Ron was tops, but this year he literally ran off with the honors with his all-around superb playing.

If you remember, Ron started the season as an end, but was quickly shifted to halfback; then to quarterback and finally finishing the season at fullback.

He led the team in most of the offensive departments. PLC total offense for the season was 1356 yards; Billings' amounted to over half of that margin with 726 yards in 97 plays. He led in pass recep-

PATRONIZE OUR ADVERTISERS

McKEWEN'S STUDIO
Please pick up all pictures ordered before Thanksgiving

DANIELS HARDWARE
On the Highway Corner
PACIFIC AVE. & GARFIELD

If You're Hungry,
Come in and
SEE US
Parkland Grill
OPEN 'TIL 10 EVERY NIGHT
EXCEPT SUNDAY

Madden's Men's & Little Men's Shop
Parkland Center Bldg. GRanite 4242

Since 1887
JOHNSONS
1141 BROADWAY
Quality PAINTS

YOUNG'S GIFT SHOP
Surprise your folks with a Scandinavian Christmas gift from Young's
CHRISTMAS CARDS
Garfield Street Parkland

DILL HOWELL Sporting Goods
929 Commerce St. Tacoma
MA. 5665

For the Smartest in
COLLEGE CLOTHES
For Men
see
Norman R. Smith
928 Pacific Ave.

Milkshakes
Hamburgers Coffee
Parkland Coffee Shop
Next to Theatre on Pacific Ave.

CALL HA. 3372
for
Sanitone Approved
Cleaning
City-wide
Daily Pick-up and
Delivery Service
FASHION CLEANERS
3820 South Yakima

SWEATER CENTER for Guys and Gals!
Washington HARDWARE CO.
EST. 1884
918-24 PACIFIC • 923 COMMERCE
SPORTS SHOP

Chapel Quotes . . .

"If we believe we are placed in this life for conditioning and training, then life is doing pretty well by most of us."—Dr. S. C. Siefkas.

"You have to see the historical background in order to see the future."

"The message of Christ must be carried to the infinite."—Dr. Dahl.

"A lot of our American holidays have lost their significance down through the years."

"In order to be truly thankful we must have a spiritual discernment and understanding."

—Dr. O. K. Davidson

"Education without the Christian viewpoint is doomed."

"You cannot teach any subject and leave God out."—Dr. Roy Olson

PATRONIZE OUR ADVERTISERS

PLC Nurses To Receive Caps

Twelve Pacific Lutheran College nursing students taking their clinical training at Emanuel Hospital, Portland, will receive their caps in a ceremony Saturday night.

Roy E. Olson, PLC director of public relations, will give the address at the candlelight capping rites to be held in St. Paul's Lutheran Church, Portland.

Miss Elaine Kraabel, R.N., director of nursing education at PLC, will introduce the class, bring greetings from the college, and will then present the class for capping to Miss Esther Jacobson, R.N., director of nursing at Emanuel.

Capping marks the end of an 18-week pre-clinical training period. The girls took one year at PLC, prior to going to the hospital. After two years at Emanuel they will return to Parkland for a year of study upon completion of which they will receive a B.S. degree.

The 12 girls to be capped include: Adonna Bondahl, Spokane; Norma Borgford, Seattle; Laurella Frazier, Pierce, Idaho; Velma Harmon, Bainville, Mont.; Kathryn Jerstad, Gig Harbor; Marilyn Krug, Connell; Oretta Marion, Connell; Eleanor Martin, Tacoma; Carolyn Pritchard, Richland; Mary Simonsen, Baker, Oregon; Sandra Standal, Seattle; and Sigrid Tollefson, of Fairfield, Mont.

Two freshmen were overheard in Memorial discussing their favorite radio programs. The first stated he liked the crime program "Man Trap." The second replied in astonishment, "I never listened to that program because I always thought that it was a program of helpful hints for girls."

PATRONIZE OUR ADVERTISERS

For Distinctive Sportswear
Come to
"THE SUZY SHOP"
at
HELEN DAVIS
917 Broadway

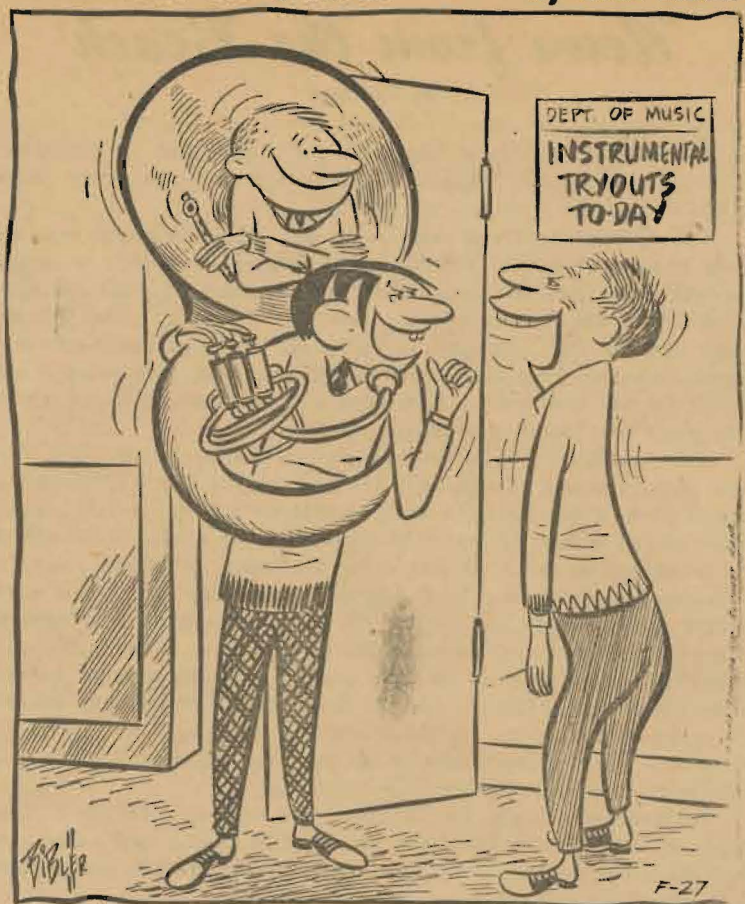
McCAY'S
ICE CREAMERY
SHAKES - SUNDAES

NEAL E. THORSEN
TRICKS - JOKES - MAGIC
Costumes, Tuxedos, Serpentine
926 1/2 Broadway MA 4861

Wilma's Beauty Shop
Permanent Waves
Hair Cutting - Tinting
CHRISTMAS CARDS
11002 1/2 Pacific Ave. GR. 5852

LITTLE MAN ON CAMPUS

by Dick Bibler



"Ya should'a seen th' look on th' professor's face when Floyd started playin' his piccolo!"

Confirmation Class Receives Communion

(Continued from Page One)

they do gather; they are not gathered up.) Well, we hardly know from one semester to the other. Especially in the fall, we have no idea who will be in the class since this extra, no-credit class is announced soon after school opens.

"The class is on a voluntary basis. The students either are suggested to me by others, or they approach me themselves. Students are freely invited to attend the class and they know they are under no obligation to be confirmed. There were five others in this present class who will not be confirmed with this class but who attended the meetings nonetheless."

"The students join for various religious reasons. Students without a church home who are willing to listen in class or chapel form their faith in their hearts and from there become people of the Bible and finally people of Christ. One of the members of a former class said, 'I don't want my children to have to wander from church to church as I have and unless the family remains together in Christ, a true Christian require you to bring is the Bible, a pencil, and a willing heart.' home cannot be possible.' These and many other reasons have been expressed by my students."

Pastor Roe will have another class beginning February 9. He will send out letters to those who have mentioned interest or have been mentioned by a friend. "All that I

Attending a conference in Minneapolis this week is Miss Margaret Wickstrom, dean of women.

PLC Debators Place High at Fresno, Calif.

(Continued from Page One)

in interpretive reading and Stuart Glibreath made the semi-finals in oratory.

Coaching the team was Professor Theodore O. H. Karl, director of the department of speech. Stanley D. Elberson accompanied the team as assistant coach.

College Cleaners

FREE PICKUP & DELIVERY
11416 So. Park Ave. GR. 5361

From the President

This year we have tried something new and different in the way of Student Body Day entertainment, through the medium of inter-club competition. Those who have prepared programs have expended a good deal of effort. Those of you who came to S.B.D. Chapel have showed appreciation through your response and continued attendance.

It is a real thrill to see so many there on our non-compulsory days, but we naturally desire to have everyone attend, including the entire faculty.

I want to invite all of you to our Tuesday festivities, whether the program be entertainment or business. Take a few moments to relax and come together as a student group. In doing so we cannot help but grow in unity of purpose and relations, an essential we definitely need as we consider our Student Project.

I'm not going to write a booklet entitled "Let's Go to Chapel"—I'm merely extending an invitation to "See You in Chapel!"

John Rydgren

PATRONIZE OUR ADVERTISERS

Stella's Flowers
ARTISTRY IN FLOWERS
We Deliver
Parkland Center GR 7863
Eve. GR. 5417

Stop In at **VERN'S**
for a
DELUXE HAMBURGER
Old Fashioned Fish and Chips
Home-baked Pies and Cakes
FULL FOUNTAIN SERVICE
Ninth and Pacific

There's always **TIME** for friendly banking service at **4** convenient offices of **PSNB** OF TACOMA
Main Office Lakewood Branch
Lincoln Branch K Street Branch
Member: Federal Deposit Insurance Corporation Federal Reserve System

For Distinctive Sportswear Come to **"THE SUZY SHOP"** at **HELEN DAVIS** 917 Broadway
McCAY'S ICE CREAMERY SHAKES - SUNDAES
NEAL E. THORSEN TRICKS - JOKES - MAGIC Costumes, Tuxedos, Serpentine 926 1/2 Broadway MA 4861
Wilma's Beauty Shop Permanent Waves Hair Cutting - Tinting **CHRISTMAS CARDS** 11002 1/2 Pacific Ave. GR. 5852

BARGAIN . . For Sale--
MEN'S BLACK SKI PANTS
White Stags — 32-inch Waist
WATER-PROOF — WARM — BRAND NEW
Originally \$19.00 — On Sale Now, \$13.00
CALL SYLVIA KIRKEBO — ROOM 328, OLD MAIN

PRINTING? . . . THAT'S OUR BUSINESS!
LaCrosse Printers
PARKLAND, WASHINGTON
GRanite 7100

Every Year . . . since its first year, Lutheran Brotherhood has shown a steady and consistent growth. Always operated on the sound foundation of the time-tested legal reserve plan. Lutheran Brotherhood is a mutual society — it belongs wholly to its policy owners.

LUTHERAN BROTHERHOOD
LIFE INSURANCE SOCIETY
608 Second Ave. So. Minneapolis 2, Minn.

THIS IS Your LIFE INSURANCE SOCIETY