



PRACTICING A SCENE from the all-school play "Little Foxes" are Paul Siqueland, Fred Bindel, Steve Goff, and John Fray. This presentation will begin its run next week in CB-200, using the theatre-in-the-round type of staging.

Adult Drama, 'Little Foxes', Begins Three-Day Run Tues.

"Little Foxes" is not a children's production as many seem to have thought, but a mature adult drama," stated Mr. Stan Elbersson, director of the play which begins its run during the coming week. Dennis Knutson will act as student director.

This dramatic presentation, which is the all-school play, opens on November 16, and will continue through November 18, with the possibility of a performance on November 15; all of these dates beginning at 8:30 p.m.

Play Uses Central Staging

Though originally scheduled for the GMS stage, it will be presented in the Classroom Building, using what is known as three-quarter central staging, which means that the action will take place both in the theatre-in-the-round fashion and also utilize the CB stage for some of the scenes.

"Little Foxes," by Lillian Hellman, is concerned with matters of social importance, and is the story of greedy brothers and a greedy sister who coldly devour the earth.

PLU Debaters Take Top Honors In Competition

PLU speakers, under the direction of Professor Theodore Karl, debate squad coach, captured eight awards in the Practice Debate Tournament held on campus last weekend, in which about twenty Pacific Northwest colleges and universities participated.

Judi Sannerud earned two first-place awards, one in the Senior Women's Division of Extemporaneous Speaking and the other in the Senior division of Impromptu Speaking. Another winner of awards was Zane Wilson, who won first place in Senior Men's Oratory, and tied for second place in Senior Impromptu Speaking.

Other individual winners for PLU include Merle Overland, second in Junior Men Extemporaneous, and Andrea Hagan, third place in Junior Women Extemporaneous.

Two teams of senior debaters placed in a six-way tie for second place in Debate; these were Dick Helstrom and Zane Wilson, and Jack Wilson and Andy Carlson.

The events of the weekend were practice runs for the Western Speech Association debate tournament to be held November 21-23. Only individual awards were given, which will be displayed at the winners' schools.

MOORING MAST

VOLUME XXXVIII

FRIDAY, NOVEMBER 11, 1960 — PARKLAND, WASHINGTON

NUMBER VII

Kennedy Captures Presidency During Closely Fought Battle

Democrat John F. Kennedy, in winning the presidency, will be the youngest man and the first Roman Catholic ever elected to the nation's highest office.

This election was the closest presidential race for some 76 years. Another close one was the re-election of Democratic Governor Albert D. Rosellini, who won by the narrowest margin in a Washington governor's race since 1940.

Democrats Gain Victory

On the national scene this was a victory for the Democratic party, for it retained its control of the two Houses of the Congress and held the large majority of the state governorships.

In this sixteenth election of the century—the Republicans have won 8 and the Democrats 7 of the other 15 — both major political parties were trying to establish a new generation in the White House.

Election Gives Another First

This was the first time that both parties had nominated presidential candidates born in the twentieth century.

During his 14 years in political life, as a member of the House, senator and vice-president since 1953, this was Nixon's first election defeat.

New President's Background

Kennedy is a man of many interests, who entered the campaign with a background as a war hero, a Pulitzer Prize winning author and a phenomenal vote-getter.

He graduated cum laude from Harvard and later attended the London School of Economics.

Wins Pulitzer Prize

In 1940 Kennedy wrote "Why

the presidential race the second time where Kennedy has at least indirectly defeated Lodge.

Wins Office With Margin

He was reelected as a senator in 1958 by almost 800,000 votes, the largest plurality ever in a Massachusetts senate race.

Kennedy will officially become President of the United States when he is inaugurated on Jan. 20, 1961.

PLU Balloting Different

The national presidential election had a far different outcome from the straw ballot recently held at PLU, in which Kennedy lost to his opponent Nixon by a wide margin.

In the Washington gubernatorial race Rosellini lost to Andrews by an even larger number of votes.

Interest in the election had been at a high point at PLU throughout the campaign due to the efforts of the Young Republicans and Young Democrats organizations, with their guest speakers and other events.

LODGE BY 70,000 VOTES. THIS MARKS

Board of Regents Considering Proposal Of Loan Refund from Ocean Shores

The Pacific Lutheran University board of regents has taken under advisement a proposal from Ocean Shores Estates, Inc., to refund the university's loan and to cancel a gift pledge of Ocean Shores to the university.

Investments Made

Last June the executive committee authorized the investment of \$250,000 of the university's investment fund in Ocean Shores Estates, Inc., a resort and real estate development on a Grays Harbor peninsula, 18 miles south of Hoquiam. The university holds one-million dollars in first-lien real estate contracts as security for the loan.

Gift Pledge Made

Ocean Shores Estates, Inc., made

a gift pledge last June in the amount of \$1,000,000 to be paid to the university over a period of 10 years.

Dr. Foss Comments

Dr. H. L. Foss, Seattle, chairman of the board of regents, said today, "The board of regents of Pacific Lutheran University is in receipt of a proposal from Ocean Shores Estates, Inc., to refund the university's loan and to cancel the intended gift pledge by Ocean Shores to the university. Meeting at PLU Monday, the board directed its chairman to appoint a committee of the board to study the proposal, and to report its findings on or before the next regular meeting of the board."

No date has been set for the next meeting.

Public Hearings on Education Held Throughout Washington

Public hearings on recommendations of the five citizen subcommittees of the Legislative Interim Study of Education have been tentatively arranged throughout the state for November 16, 17, 18, and 30.

On the local scene a hearing will be held in Tacoma, reviewing the study made by these committees covering the improvement of instruction, education beyond the high school, school finance and organization, the teacher, and efficiency and economy of school management.

Song Fest Set For Nov. 19th

PLU's Annual Festival of Song will be held on Saturday, November 19, at 8:00 p.m., in the GMS.

This event will be sponsored by Harstad Hall to help celebrate the official change of its name from Old Main.

The Festival of Song is a program in which each residence hall will enter two selections, one a sacred and one a secular piece.

Judging will be done on the quality of the performance, and the winner will be awarded a trophy which they will keep until next year's Song Fest.

"Through good attendance by the public and participation through voicing reactions, the people of the state can inform the committee whether the reports reflect their desires," states Senator Andy Hem, chairman, "and this response can in turn be carried to the Legislature in January.

After the public hearings the interim committee and advisory council will adjust the reports and recommendations to the public wishes and then present its proposals to the Legislature.



Friday, November 11

"Mr. Roberts," starring Henry Fonda, James Cagney, Jack Lemmon, and William Powell, will be the campus movie tonight at 7:15 and 9:35 p.m. A Three Stooges short will be shown at 9:15 and 11:35 p.m. There will be no campus movie tomorrow night.

"Christmas Carol" tryouts are this afternoon from 3:30 to 5:30 p.m., in the Radio Studio.

The Toastmasters' roller-skating party is tonight from 9:30 p.m. to 1:00 a.m., in the Tacoma Roller Bowl. Meet in front of the CUB for rides at 9:30 p.m.

Co-rec will be in the gym tonight from 7:30 to 9:30 p.m.

Monday, November 14

ICC meets in A-101 at 7:00 p.m.

Tuesday, November 15

Irene M. Norton, YWCA Recruitment Visitor, will be on campus from 9:00 a.m. to 5:00 p.m., to talk with faculty members whose students might be interested in professional opportunities in the YWCA.

There will be a donut sale in North, South, West, Ivy, Clover Creek, Harstad, Evergreen, and Stuen Halls.

Thursday, November 17

Tassels Scholarship Tea will be in South Hall Lower Lounge at 8:00 p.m. Chairmen of the event, for women who have earned a 3.00 the previous semester, are Carolyn Ericksen and Judy Struthers.

Please submit your ideas (serious design) for the ASPLU annual Christmas Card Contest. There is a cash award. Turn them in to Mary Rogers, Linda Blomquist or the ASPLU office by November 15.

The registrar announces that grades will come out the beginning of next week, and asks students please not to call the office to ask about them.

Campus Political Leaders Given Internships, Funds

Political internships amounting to a stipend of \$25 each were awarded to Roger Hildahl and Louis Wagner.

The money was in return for practical experience of at least 25 hours working in a Pierce County party headquarters during the month preceding the election. This program is a local division of the nation-wide effort to encourage student participation in politics and provide improved training and understanding for instructors and students.

Under Dr. Donald Farmer, a trustee on the board of the Citizenship Clearing House, it has been affiliated on the nation-wide level for three years. Now with the creating of a local division, there is a greater opportunity to actually have students participating, it is felt. Dr. Farmer now hopes to extend this program in future years so that more students may work on the local level and also be chosen for the national program.

Roger, a junior, gained his experience working in the Republican center and in his capacity as president of the Young Republicans.

Louis, a freshman member of the Young Democrats, worked at the Democratic headquarters.

Plan for Yule Decorations

Contributions are being sought from the student body to support a drive to purchase Christmas decorations for the large fir tree in front of the PLU Library.

After the coronation of the Lucia Bride on Friday, December 2, in the CMS, she will officially light the tree, as she makes her way to the festivities in the Classroom Building.

Interested students will decorate the tree with the lights obtained through the fund.

Anyone wishing to aid this plan may do so by placing contributions in the designated places, situated around campus for this purpose.

Your City

Junior College Views Expressed

An educational committee has recently been organized to study the possibility of a junior college for Pierce County.

Next Monday a meeting will be held at Ivars for further discussion and decision on this issue.

Committee member I. T. Coppin stated, "We don't have all the information yet. We haven't established yet if it is a desirable project."

Another view expressed by co-member Robert Thompson is "Yes, a junior college is desirable in view of the increased numbers having trouble getting courses they desire on this level."

Factions in support of a local junior college are groups centralizing through the Puyallup Chamber of Commerce, including Kiwanis, Rotary and Women's Business and Professional clubs.

Local Debate Teams Attend Oregon Event



Professor T. O. Karl

Two teams from the PLU Debate Squad have been selected to attend a tournament at Pacific University in Forest Grove, Oregon, this coming weekend, November 18 and 19.

Attending the Western Speech Association debate tournament which will be held November 21-23 at Oregon State College in Corvallis, Oregon, will be five teams.

Gives Team Names

Entering the Senior Women's Division will be Judi Sannerud and Karen Hegstad; Senior Men's, Zane Wilson, Dick Helstrom, Andy Carlson, and Jack Olson; Junior Men, Merle Overland and Gordon Gray; and Junior Women, Joan Maiers and Jean Adair Leppa.

The debate topic is resolved: that the United States should adopt a program of compulsory health insurance for all its citizens.

Other Division Use Topics

Further discussion will be in the individual events with extemporaneous speaking on Government Policies in Mass Communications Media; and impromptu participants concerned with our foreign relations; plus the oratory and interpretative reading divisions.

Future activities for the squad include tournaments at Seattle Pacific College, and at UPS for the whole squad; a High School debate tournament in February; one at Oklahoma in March for Pi Kappa Delta members; plus two members of the squad who will be selected to go to Hawaii in the spring.

TV Highlights

Schedules of the television programs and events broadcast on KPLU Channel 2, PLU's closed circuit television station, will be presented here weekly in the Mooring Mast.

- Monday, November 14**
- 10:00 p.m. News
- 10:15 p.m. Trio
- 10:30 p.m.—Devotions, led by Pastor John Larsgaard.

Low-Cost Travel Provided by NSA

Low-cost, educational travel programs to Europe, Latin America and the Far East are offered to students by a non-profit travel office of the National Student Association.

NSA offers forty different programs to Europe including: "Drive-It-Yourself" groups, Festivals of Music, Art and Drama tours, East-West tours visiting Scandinavia, Russia, Czechoslovakia, Poland and Central Europe, Israel and Western Europe tours visiting Israel, Greece, Italy, Switzerland, France and England, study programs to Europe, Latin America and Africa.

Programs Are Varied

Programs are arranged allowing the participant to visit four, five or six countries during a summer. The groups are transported to Europe via one-class, student ships manned with an NSA orientation staff who give lectures and lead discussions in European languages, political science, art, history, music, and travel tips.

In Europe the participant is met by a graduate student guide who is a representative of the student union in his country and familiar with his country's art, history, customs, and culture.

Includes All Expenses

A fifty-four day program visiting five countries costs \$820, including trans-Atlantic transportation and all expenses in Europe; a seventy-day program visiting six countries costs \$920, including round-trip trans-Atlantic transportation, and all expenses, including such extras as opera, concert, and theater tickets.

For further information write: National Student Association, 2161 Shattuck Avenue, Berkeley 4, California, Department S-Y.

Students Receive Financial Aid

One-third of the 12,000 students enrolled at colleges and schools of the American Lutheran Church depend at least in part on financial aid, a recent survey showed.

St. Olaf College of Northfield, Minnesota, the largest of the schools also has the largest of the programs, with a total of \$366,497 in aid to students, during the 1958-59 school year.

PLU was third on the list of total support given, according to this distribution: scholarships \$78,113; loans, \$2,356; student work, \$80,139, making a total of \$160,808.

Chilean Students Face Disaster

One thousand students are without housing at the University of Concepcion in Chile.

The earthquakes May 21-27 in Chile not only collapsed dormitories at the University, but also devastated boarding houses where 787 students lived. A first-hand report from Concepcion states that "the students suffered considerable personal losses, and since most of them were living in the older houses which were the pensions and which were almost totally destroyed, the students are now living in all kinds of makeshift tents and shacks."

World University Service is making a program allocation to purchase a pre-fabricated living unit which will accommodate twenty students, and it hopes that if extra-budgetary money is raised, more units can be given to the university.

WUS is also soliciting gifts-in-kind to re-equip the physics laboratory. The Institute of Physics at the University has submitted a list of equipment which was damaged beyond repair amounting to \$33,000.

STELLA'S FLOWERS

Flowers for All Occasions

12173 PACIFIC AVE. LE. 7-0206
(Foot of Garfield) We Deliver

JOHNSON'S DRUG

(All Students' Needs)

GARFIELD AT PACIFIC AVENUE
Thurs., 9 a.m. to 10 p.m.; 12-8 Sun.
PRESCRIPTIONS - COSMETICS
Complete Camera Department

TOWNE HOUSE

Donut Bar and Quick Lunch

HOME-MADE PIE
DONUTS TO GO

Order Today for Tomorrow



OFFICIAL PLU RINGS

Custom Made to Your Stone, Engraving and Size

Ron Soine Extension 79

RECORDS

LP's, Singles — large selection at

ABC ELECTRONICS

325 Garfield Street

Free Bonus Records for Record Club Cards



Elementary...

my dear Watson! From the happy look on your physiog, from the cheerful lift you seem to be enjoying, I deduce you are imbibing Coca-Cola. No mystery about why Coke is the world's favorite ... such taste, such sparkle! Yes, my favorite case is always a case of Coke!



BE REALLY REFRESHED

Bottled under authority of The Coca-Cola Company by Pacific Coca-Cola Bottling Company, Tacoma, Washington

BEST SELLER LIST

FICTION

1. Advise and Consent, Drury.
2. Hawaii, Michener.
3. The Lovely Ambition, Chase.
4. The Leopard, Di Lampedusa.
5. To Kill A Mockingbird, Lee.
6. The Chapin Report, Wallace.
7. Mistress of Mellyn, Holt.
8. The Child Buyer, Hersey.
9. The Last Temptation of Christ, Kazantzakis.
10. Diamond Head, Gilman.

NON-FICTION

1. The Waste Makers, Packard.
2. Born Free, Adamson.
3. Taken at the Flood, Gunther.
4. Kennedy or Nixon: Does It Make Any Difference, Schlesinger.
5. Folk Medicine, Jarvis.
6. The Conscience of a Conservative, Goldwater.
7. The Politics of Upheaval, Schlesinger.
8. The Liberal Hour, Galbraith.
9. How I Made \$2,000,000 in the Stock Market, Darvas.
10. Enjoy, Enjoy! Golden.

The Following Observations Picked Up Along the Way . . .

by Roy Olson

While making my pitch one day to some high school seniors about PLU, I threw out this challenge, "PLU is a friendly campus. Suppose we make a deal. If you will come to the campus some day, I will meet you at the front entrance. We will wait for a between classes break when the students are out of doors. If you can get across that campus, all alone, without at least a half dozen students saying hello and perhaps even asking you what they can do for you, I will take you over to the College Union and set you up to the juiciest hamburger and thickest malted milk in the place. On the other hand, if you lose, you stand the treats." A girl got up and said, "Don't take him up on that! You would lose, I know because I have been there."

That was an awfully nice compliment to our PLU student body. As we grow, we need to guard that reputation jealously. The bigger we get, the easier it will become for us to pass people up as we meet them. When that day comes, something wonderful which has been part and parcel of our campus will be only a memory.

That will be the sorry day when Alums will come back and go away saying, "It isn't like it used to be." We can prevent that but it will mean that we shall have to watch ourselves.

Do you remember when you were a freshman, you seniors? Of course you do. Do you remember what it meant when an upper classman rolled out the welcome mat? Now go back a year or two to the time you visited the campus with an eye to choosing a place for your college career.

Do you remember what it meant when a PLU student said such a little thing as "Hi!" So what if you should happen to ask somebody who is a fellow student if you might show him around. That would be good for a laugh and it might be the beginning of a beautiful friendship.

Campus Dress-up New; Solid Reasons Cited

by Alice Wenness

This university year has brought many changes to the campus of Pacific Lutheran. Not the least of these is the Associated Men Students' idea of dressing up for dinner on Thursday nights.

According to Ted Johnstone, AMS president, the purpose of the "Thursday Night Dressups" is to improve the general attitude of the students on our campus. "We tend to act more mature when we are dressed up," Ted explained. "Our campus attitudes change in everything. For example, we tend to walk on the sidewalks rather than the grass. In this respect we can change even our university's appearance by taking pride in our own appearance."

Thursday night was chosen by the AMS because that is the night our Artist Series are usually scheduled. They have suggested that there would not be any need to change clothes after dinner to attend the Artist Series which would be very handy for the off-campus students. The fellows could ask their dates to dinner and then to the Artist Series without any extra cost or waste of time.

"However," Ted cautioned, "don't get the idea that the AMS is trying to enforce this. If the students want this then it will be up to them to



cooperate."

The Associated Women Students is already cooperating by encouraging all women students to dress up to look their best on this night.

If you have an opinion or comment on this change, drop it in the suggestion box in the student body office or write a letter to the Mooring Mast. The AMS and the student body would like to hear from you.

Heard Around Campus

After the elections:

"Kennedy is a bum."

At the end of a lecture:

"Each of us is a magnificent experiment. Each of us is his own peculiar freak."

Concerning Watne:

"I guess I'm reactionary, but he takes sin so seriously."

During the elections:

"I'm for Brother Homer."

When told to support a certain Lucia Bride candidate:

"Is she Republican or Democrat?"

At church:

"Don't look for a perfect church to join, because it will no longer be perfect the minute you join."

National Growing Pains

(Quoted from Hugh Seton-Watson)

"The poverty in which three-quarters of the human race live is a challenge to the rich nations. It is also the underlying cause of the revolutionary movements that threaten both internal and international peace in the greater part of Asia, Africa and Latin America. These threats to peace provide the opportunities for totalitarian imperialism.

"In countries still directly ruled by European colonial powers, the aim of the intelligentsia, the social group which provides political leadership, is national independence. No amount of economic aid by the metropolitan private business, however useful or however well administered, can be accepted as a substitute for independence.

"Suspicion of Western attitudes does not end when independence is won. The new rulers need rapid industrial progress to remove poverty, to keep pace with population growth, to satisfy their longing for national greatness and to provide lucrative and honorific jobs for their ambitious followers. They expect as of right that their countries be soon endowed with Western levels of industry and Western standards of living. When Western experts, now no longer their masters, but their advisers, argue that these things took centuries of toil and experimentation to create in Western Europe, they suspect an imperialist trap, yet another excuse to conceal the aim of exploiting them, by means more subtle yet no less deadly than the old colonialism.

"Even if in rational argument Asian or African intellectuals may admit that there is some truth in the Westerners' case, yet at a deeper irrational level the same men will hate the Westerners for not at once providing them with all that they themselves have. When their former rulers, or the American allies of their former rulers, to whom they automatically attach the same 'imperialist' label, present themselves as anxious to protect their new-won independence from the new threat of totalitarian communist imperialism, the suspicion grows. They do not consider themselves threatened, they wish to have no part in the quarrel between the Great Powers of West and East. The Western offer of alliance and military aid is clearly yet another imperialist maneuver, designed to reassert Western dominance in a concealed form."

(The above entire quotation is from Hugh Seton-Watson, Professor of Russian History, University of London; "Neither War Nor Peace," U. S. News and World Report, August 29, 1960).

By the Bootstraps

Under Foot

Four things of which I have been reminded this week I ask you to do:

WALK AROUND

our university seal in the administration building. Respect it in this way.

WALK TO

the student discussions Sunday mornings at 9:30 in Jacob Samuelson chapel. Along with your classes be a student of the Bible.

WALK REMEMBERING THAT

there are men whom you don't even know exist who are expending their lives in causes of lasting value. Where have you been?

WALK ACCORDING TO

the fear and love of God so that you "neither belie, betray, slander nor defame your neighbor; but defend him, speak well of him, and put the best construction on everything." Ponder this.

David Crowner, editor

A Letter Home

Dear Mom:

I thought it was about time to write a letter. I really like college and living in the dorm. Do you remember the ten dollar fee for the health service? Well, I made use of it last Saturday night.

I was taking a shower before taking my date to prayer fellowship meeting, and a bunch of the guys flushed all the toilets in the unit at once and I got second degree burns on my back. I went right over to the health center as soon as I found out where it was and they fixed me up right away. I was really impressed. They have a reception room, a couple of offices, some examining rooms, a doctor and two good looking nurses. And to think they operate on only thirty-two thousand dollars a year from student fees.

Another thing that impressed me is all the cute girls in my class. Boy, they are really sharp. During freshman week I thought that I was really going to have a ball. But after the upperclassmen came back I noticed that they were taking the freshmen girls out and us freshmen fellas were getting aced out. I asked my unit leader what the score was and he said that the upperclassmen are afraid of the upperclasswomen because they are over-eager to get married. He told me to either check up on the upperclasswomen or get busy looking over Who's New. I chose the latter because the upperclasswomen didn't impress me.

I finally found a girl that didn't already have a date and she's the one I went with Saturday night. When they turned the lights out at the meeting she put her head on my shoulder. I kinda got goose bumps all over and that hurt the burns on my back so I told her to quit it.

I got a job in a store downtown. Remember Dad told me to or I'd starve. The boss is real nice. He told me that since I was pursuing a college education he'd give me a chance to run things. And he did. I run the marking machine, the vacuum cleaner, and the floor buffer.

I forgot to tell you the most important thing of all. I got elected as a freshman senator. During Orientation Week, I put up a lot of signs, took out one girl from each dorm and I was in.

I'm really glad I came here instead of the "U" because we have chapel service every day. Some of the upperclassmen don't like it. I guess it's shorter than last year and a lot of them don't have time to read all their mail.

If you see Shirley tell her I'm sorry I haven't written. I really don't know just what to say. I guess it's out-of-it to have a girl back home so why don't you say something to her for me. See you this weekend. I'll be home Friday night because there aren't any classes Saturday because it's a special homecoming.

Willy

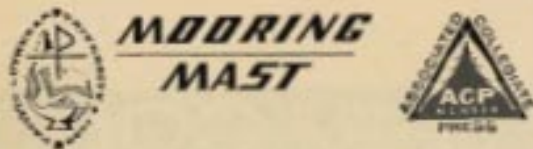
(Taken from the October 21, 1960, issue of the Concordian, the school newspaper of Concordia College in Moorhead, Minnesota).

America's Fighting Force

College students may easily lose contact with what's going on in their communities. All across the nation, the 1961 Red Cross fund drive began last month.

An example of Red Cross aid took place recently when the biggest force of volunteers and staff to work on a hurricane emergency operation in all ARC's disaster-fighting history swung into action on Hurricane Donna.

Chapters from Puerto Rico to Massachusetts operated 720 shelters, feeding and housing 69,518 persons forced to flee from their homes.



Editor.....David Crowner
News Editors.....Carol French, Ann Haggart, and Jean Adair Leppa.

Reporters: Margy Eash, Donna VanGilder, Lavonne Erdahl, Deanna Hanson, Eleanor Bousfield, Judy Kragh.

Feature Editor.....Ruth Walker
Reporters: Alice Wenness, Judy Munger, Dick Halvorson, Ann Schnaackenberg, Deanna Hanson.

Sports Editor.....Kent TeKrony
Reporters: Bob Rydland, Creighton Germeroth, Bob Mattson, Randy Stime, Mike McIntire.

Intramurals Editor.....Gordon G. Gradwohl
Make-up Editor.....Larry Iverson

Typists.....Doug Johnson, Nancy Berntsen, Kathy Moore
Photographers.....Frank Netter, McKewen Studio

Business Manager.....Warner White
Assistant Business Manager.....Deanna Haugland

Advisor.....Mr. Milt Neving

The Mooring Mast is published weekly during the school year by the students of Pacific Lutheran University. Subscription price: \$3.00 per year. Phone LE. 7-8611.

Watne Stresses Need For 'Home Missionaries'

Rev. John Watne, from the mission field in French Equatorial Africa, was interviewed by Maureen Udman, PLU junior, before leaving campus on Tuesday. The questions and answers follow:

In what way have the PLU students impressed you?

By their sincerity and interest in spiritual things.

What, if anything, do you regret to see or not to see in us?

It would be desirable for all to show the interest that many do.

Have denominational difficulties arisen on your mission field?

No, because there are almost no other groups on this particular mission field. Anyway, there is great cooperation through the Federation of Christian Protestant Missions. (All members of this group are quite fundamental: the old Presbyterian groups, Baptists, some Brethren (National Fellowship of Brethren Churches).

However, cooperation doesn't necessarily mean unionism, that is, not organic union where matters of compromise on the essentials of our faith would be involved. Nevertheless, cooperation in the fullest sense is the true unity of the Church. It is not necessary to agree in all forms, traditions, and customs, but it is important to agree on essentials.

Is there any one passage in the Bible that can be directed to us students—some challenge that is of special urgency?

Acts 20:24, "But I do not account my life of any value nor as precious to myself, if only I may accomplish my course and the ministry which I received from the Lord Jesus, to testify to the Gospel of the Grace of God."

This should be the calling of each

of us, that in our youth we may be on fire with a purpose, a course in our life!

Would you advise students heading for any vocations to think of fulfilling their jobs as Christians in other lands where their skills are needed along with the witness?

Not necessarily in other lands, because we need Christian leadership above all else in this country; especially in the coming times. We can be "missionaries" wherever we are, wherever there are people who are lost and to people who have been baptized, confirmed, and are going to church, but who haven't experienced the joy of being a Christian—the precious fellowship of being in Christ, a personal growing relationship with our Lord. The greatest sin in our churches is taking for granted all our members are true Christians.

This is the difficulty in many of our churches at home. Many of our people haven't experienced the whole joy, the life-permeating fellowship in the Lord.

As students we might open our eyes here and be, not preachers, but living, talking Christians, "on fire" so to speak when we are home in our own congregations, when we are here at school, and when we will be joining a congregation some place when we get out of school.

This starts with the individual, friend to friend, our goal bring that each might appropriate joy and full living in the Gospel.

What do you think of segregation in America?

Rev. Watne answered to the effect that he was in favor of desegregation. And added, "The basis of all trouble in the world is sin. Problems of one kind or another will continue unless men are 'born anew.'"

What \$100 Can Do Through WUS

PLU gives to the World University Service through its Campus Chest program. Here is an example of what \$100 can do when given to the WUS:

- \$17.54—3 meals a day for 70 days for a girl in a hostel in Florina, Greece.
- \$ 8.68—2 week's hospitalization for a Japanese student in a TB sanitarium.
- \$10.00—2 weeks' maintenance of an Algerian student in a refugee camp.
- \$14.00—Room for 2 months in a WUS hostel in Korea.
- \$16.00—Room and board for 2 weeks for a girl in Utkal University in Cuttack, India.
- \$17.40—A scholarship for a Korean refugee student.
- \$16.38—2 weeks' full tuition and room and board for a work scholarship for a refugee student in Hong Kong.

\$100.00

After the Ball Is Over

I can hear all the protestant-Nixon fans singing, "O happy day when we shall stand . . ."

It really makes me feel good to be encouraged to vote on such rational grounds such as: "Vote against the playboy initiative" or "Vote for initiative 205—it will increase job opportunities and the profits can be used for research." (They didn't say research on alcoholism, did they?), or "Vote for Andrewini, he's honest, sincere, and the right man for the job!" . . . Oh, well! If it weren't for civilization it's doubtful that the H-bomb would have been developed. And how about Nixon and Lodge and Kennedy and Johnson? "That's what I say. How about them?"

"I'll tell you how I feel about it, Sam: to say something like that would be as foolish as to say that Stoicism didn't divide philosophy into logic, physics, and ethics."

"That's the way I feel about it, too. I mean, it's a cinch that to say something like that would be as silly as to say he didn't even divide it into those things."

P.S. Join the Young Democrats—politics can be fun!

—Art Ellickson (non-partisan)

PLU Russian Class Fulfills Demand

Languages are fascinating studies—and the awareness that the language being learned might some day be the tongue of our conquerors or conquests makes Russian an especially interesting study.

About 24 students and teachers at Pacific Lutheran are taking the first year Russian course offered each Tuesday and Thursday evening at 7. The class, new this year, and the reaction to it are significant signs of the coming times. Many more students would "love" to take Russian if they could fit it into their schedule; several plan to take it after graduation.

As for the select 24 now enrolled, although several are teachers both from the Tacoma area and PLU, the

attended University of Washington for four years. He also teaches world history.

His main reason for going into teaching Russian is summed up in one word: need! In proportion to the growing emphasis on the Russian language, there is a huge shortage of qualified teachers.

In his high school class, he finds the students soon realize that Russian is difficult. "They have to have a real interest, and then study," he said, explaining the successful Russian student. As for his college class, the students are "much easier to teach." Mr. Smith would like to visit Russia, but at present is too busy teaching the language.

His class is highly enthusiastic about Russian. Mr. Charles Haydon, who heads the French department and has taught some four foreign languages, is auditing the class. Not only is Russian the major slavonic tongue, he explained, but it also has "more political importance than any one language." Mr. Haydon stressed the importance of Russian in graduate schools and scientific work as reasons for his interest.

Tim Ferguson, student, is a German major who decided to take Russian and has found it "not at all difficult." He attributes this to the complete and explicit teaching of Mr. Smith. Ann La Grélias, a PLU coed, finds the alphabet difficult, as many of the letters are pronounced differently, but she claims that Russian isn't as hard as most people think. She first decided to take Russian as a language, but now her plans include taking the two years offered her, then learning enough more to be able to teach it some day. She enjoys Russian writings immensely; her great ambition is to be able to read these novels in Russian.



Mr. Canfield Smith

majority of the class is students who needed a language to graduate and decided on Russian. Four credit hours are given for the class and special arrangements have been made for the language lab to be open on certain evenings for the part time students who work during the day.

Mr. Canfield Smith, the instructor, is also teaching Russian at Clover Park High. He went to Willamette University for one year, then

YOUNG'S Gift Shop
SCANDINAVIAN GIFTS
516 Garfield LE. 7-5559
(Across from Old Main)

ECON-O-WASH
12171 Pacific Avenue
Wash 20c, Dry 10c
SHIRTS AND DRY CLEANING

LAURINAT'S apparel
We Outfit Coeds
406 Garfield LE. 7-5317

EDWARD FLATNESS
"Your Lutheran Mutual Agent"
P. O. Box 2275, Parkland 44,
Washington—LEnox 1-0826

PARAGON PRINTERS, INC.
FINE PRINTING - LITHOGRAPHY
11802 PACIFIC AVE. PHONE LE. 7-7100

Marv Tommervik's
PARKLAND FUEL OIL SERVICE
CHEVRON GASOLINE
LUBRICATION
12002 PACIFIC AVENUE PHONE LE. 7-0256

SKI EQUIPMENT
Rental and Sales
PARKLAND Sports CENTER
JUST 15 SHORT BLOCKS FROM CAMPUS
Corner 112th and Pacific Avenue
Phone LE. 7-5677

JOHNNY'S DOCK
Specializing in . . .
Steaks and Seafood
Combining Excellent Service and Smart Decor to Provide the Ultimate in Quiet, Relaxed Dining
Pier 3 - Port of Tacoma Road

— Daybreak —

ACCENT ON CAMPUS SPORTS

IM Football Ends for 1960 Season: Evergreen, Basement Co-Champs; 3rd Floor Tumbles to Third Place

EVERGREEN AND BASEMENT TIE FOR CO-CHAMPIONSHIP

Monday in a hard-fought clash the Basement and Evergreen fought down to the wire in the league game that foretold the championship outcome. A determined Basement eight jumped out in front at the outset scoring twice in the first three minutes of play. But Evergreen fought back with a Frank Waterworth to Roger Reep pass-play to make 12-6 in favor of the Basement at the mid-point.

The Basement again tallied early in the second half as Bill Peterson's passing arm did the trick. The "Feds" of Evergreen, using their "goon-squad," or defensive unit on the offensive, struck back. Dave Haaland, defensive end, playing quarterback, threw twice to Roger Bakken on the goal line to knot it at 18-18. Evergreen's Jack Lensing intercepted a Peterson pass and the runback put Evergreen on the Basement 20 yard line, but the fates were against them as the clock ran out.

Evergreen 18: Waterworth, 1 TD pass; Haaland, 2 TD passes; Roger Reep, 6 points; Roger Bakken, 12 points.

Basement 18: Bill Peterson, 3 TD passes; Tom Alden, 6 points; George Lechner, 6 points; Gary Jonson, 6 points.

WESTERN OUTLASTS EASTERN, 12-6

Eastern, outmanned but not outplayed, lacked the necessary strength in the final half against Western on Monday, as they were defeated by "six." A Ron Hanna to Darwyn Eikum pass-play was Eastern's only tally. For Eastern Ivar Eliason threw twice, both to Norm Dahl, to put Eastern on the board with the winning points.

Western 12: Norm Dahl, 12 pts.; Ivar Eliason, 2 TD passes; Leo Eliason, Dick Hagerty, Dick Davenport, Ken Gaal, John Johnson, Pete Gahlhoff.

Eastern 6: Ron Hanna, 1 TD pass; Darwyn Eikum, 6 points; Loren Hildebrand, Boomer, Flatness.

EVERGREEN CLINCHES TIE FOR TITLE IN FINAL WIN OVER WESTERN

Wednesday, the final day for this year's football intramurals, saw Evergreen who tied the Basement the previous game, out-winded Western 12-0. Evergreen again deployed two units and again used their defensive unit on the offensive in the second period. A sparkling pass-lateral-and run play, Waterworth to Bakken to Peterson, in the final minutes of the first period put Evergreen ahead 6-0 at the half. Western poised many a serious threat, but could not make the necessary plays click when it counted. Leo Eliason, Peter Gahlhoff, and Ivar Eliason were the important passers for Western, but they failed to put a score across in the final minutes. Another Waterworth pass, to Roger Bakken, wrapped it up at 12-0.



THE BASEMENT—Coming through the heap to dominate second round play the Basement tied for the 1960 title. Back row (l. to r.) George Lechner, end; Bill Peterson, quarterback; Larry Peterson, back; Jim Boeshans, back; Bob Sanders, back; and Tom Alden, end. Front row (l. to r.) Linemen Neil Christianson, Don Samuelson, Jerry Lohn, Gary Jonson, and John Poulsen. Not pictured is Pete Quam.

IM Football Final 1960 Standings

Team	Won	Lost	Tied	PF	PA	FPP
BASEMENT	10	1	2	242	74	11
EVERGREEN	10	1	2	207	108	11
3rd Floor	8	1	4	233	84	10
Western	6	5	2	148	116	7
Eastern	5	7	1	129	156	5½
4th Floor	3	9	1	181	245	3½



EVERGREEN COURT "Federals"—These are the "man of Evergreen," who somewhat successfully defended their 1959 IM Football Title by tying with the Basement for the 1960 co-championship. Back row (l. to r.): Gary Kieland, end; Ron Sletta, end; Roger Reep, end; Chris Halvorson, back; Darryl Ashpole, back; Frank Waterworth, back and co-captain; Gary Olson, back and co-captain; Roger Anderson, back; Rog Bakken, end; Ken Ruud, end; Larry Peterson, end; Tony Reynolds, end; Dave Haaland, end and co-captain; and Kent TeKrony, coach. Front row (l. to r.): Linemen Ron Hammond, Frank Lehman, Dave Savage, Eric Lindholm, Matt Ernst, Jon Olson, Dan Haasenpflug, and Bob Gross. Not pictured is Jack Lensing.

3RD DOWNS 4TH IN "CONSOLATION" 18-6

Demanding at least third place in the league, 3rd Floor stunned 4th Floor again in Wednesday's game. 4th didn't see a win in the second round of play and couldn't come close to victory in their final.

3rd Floor 18: Rod Cillo, 2 TD passes and 6 points; Al Bloomquist, 6 points; Dan Bechtel, 1 TD pass and 6 points; Lars Johnson, Gerald Gettis, Warren Willis, Dick Clark, Don Jensen, Ed Velure, Lowell "Red" Stordahl, Al Johnson.

4th Floor 6: Snard Hanson, 1 TD pass; Bob Mattson, 6 points; Stan Fredrickson, Lloyd Soine, Phil Yorkers, Jerry Evanson, Bill Brooks, and Gary Sund.

Grad Gabs

by G. G. Gradwohl

For sale cheap, 400,000 "I like Dick" buttons! I really didn't think Robert Finch and his young Democrats were that serious; hope they gloat themselves to death! Well, I'll have to suffer through the next four years and bear it.

Intramural basketball will begin league play November 29; that's the Tuesday after we come back from Turkey vacation. There will again be three leagues (A, B, C), but if the number of teams substantially increases, and we suspect they will, provision will be made to set up a fourth (D) league.

George Pikes

Also

Wound up the intramural football action this week with 2 for 4, doing the season we picked 22 out of 34 for a season average of 66 percent. Will start pick'en B-ball right after Tukey-Time. Last Week: 7/10—One perfect! Season: 18/27 for 66 percent.

PLU vs. EASTERN

Two in a row and pluu-ens are on their way to a new winning streak. In the final of the '60 season both teams will be glad to get it over with, but with some hope of finishing with a big stick. Could forecast a tie (it's a thought); but we'll say goodbye to "Buck" Alexander and the other men on the Five-Year Plan by picking—and not out of courtesy:

PLU over Eastern by 16 points!

UW vs. CALIFORNIA

Fans that thought Washington ran wild over USC last Saturday will be in for a repeat tomorrow in Seattle. Although Cal did knock over a OSC team that was run in the ground the previous game, they will be no offensive match for the "UW McKeta's." It's Homecoming at the "U" and the alums will be WILD! Go, you Fleming, Mitchell, Jones, Jackson, go-go!

Washington over California by 34 points

Without any explanation I'll pick these winners:

UCLA over Air Force by 32 pts.

Baylor over USC by 1 point.

Oregon over W. Virginia, 33 pts.

Ore. St. over Stanford by 11 pts.

WSU over Idaho by 27 points.

Utah St. over COP by 21 points.

Pitt over Army by 9 points.

Syracuse over Colgate by 23 pts.

Iowa over Ohio St. by 10 points.

Minnesota over Purdue by 7 pts.

Navy over Virginia by 38 points.

Missouri over Oklahoma, 41 pts.

Ol' Miss. over Tenn. by 6 points.

Geo. Tech over Alabama, 21 pts.

Kansas over Colorado by 1 point.

Mich. St. over Northwestern by 18 points.

Wisconsin over Illinois by 3 pts.

IM Basketball

Intramural basketball practices will begin next week, between 6:30 and 9:30, Tuesday and Thursday evenings. Check the posted schedules for time and court.

All-Star Ballot For IM Football

This year we are starting a new service of letting you, the participants, nominate the 1960 IM Football AllStars. Of course the final selection of the 16 players will still rest in the hands of the IM committee (of two). Clip out the ballot and write in your selection, the first 16 are serious and as for the remainder use your better judgement. After completing the ballot drop it in the boxes which are located in the Student Union and Old Main. Let's hear from you by Wednesday, Nov. 16.

ALL-STAR FOOTBALL BALLOT

Offense:

RE.....

RG.....

C.....

LG.....

LE.....

B.....

B.....

B.....

Defense:

RE.....

RG.....

LG.....

LE.....

RLB.....

LLB.....

B.....

ALL-OPPONENT CHOICE

1).....

(Loudest Griper)

2).....

(Most Ugly)

3).....

(Most Clumsy)

4).....

(Always Best Dressed)

5).....

(All-American Material)

6).....

(One-Man Team)

7).....

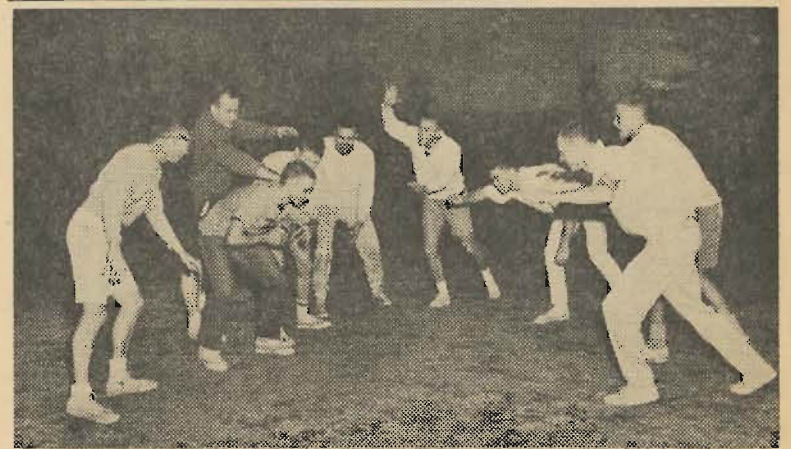
(Constant Cheater)

8).....

(Cry-Baby, Always Hurt)

Extra).....

(Most Honest Ref)



EVERGREEN 18, BASEMENT 18—Evergreen's Chinese Bandit unit or the defensive "goon-squad" as they are commonly called, rush in on two Basement backs (simulated), in Monday's championship playoff. Left to right: Haaland, Bakken, Quam and Boeshans of the Basement, Lensing, Kieland, Reynolds, Peterson, and Anderson. (Photos by McKewen).

Knights Raise Lance to Third Straight

Pacific Lutheran University will be looking for its third straight Evergreen Conference win tomorrow night at 8:00 in Lincoln Bowl when the Knights plan to avenge Eastern Washington's 13-12 early season victory.

The Lutes have been picking up steam from a stunning 14-8 crushing of the Central Wildcats. Last week the Knights clouted arch-rival UPS, 13-0. Thus, sniffing the humiliation of a previous 21-14 loss

to the Loggers. This is fair warning to the league, the Lutes will be conference contenders next fall.

Inexperience was the most potent obstacle to hurdle enroute to glory. Coach Gabrielsen summed up the gridiron Cinderellas:

"We had a psychological barrier built up over the past few years that we couldn't win. Our game philosophy was play hard, have fun and see what happens. The spirit was always there, but

too often we played on spirit only, instead of thinking smart football like we have the past two games. Now, the boys expect to win and we don't need to worry about spirit. Secondly, we are basically a sophomore team that has nowhere reached its peak."

Coach Gabrielsen stressed the red shirts contribution to the team. When you have a bunch of kids pushing the regulars, morale is sure to be high. Fellows like Gary Stubbs,

Denny Harris, Warren Lee, Enoc Johannson, and George Viglund who seldom suit up have played an unmeasurable part in late season victories.

The Lutes, win or lose, will be closing out the best season in two years. In 1958 and 1959 the always tough football team could only muster one win each year. This fall the pattern has improved tremendously with three wins under its belt and one game remaining.

Closing out the schedule on a harmonious note will entail sewing up the Eastern attack led by quarterback George Stephens. Speedy back Dave Milan, and bruising Dave Crowell lend variety to coach Chisus' winged-T variations. Bill Palmer at tackle, Rich Hilty at center are Savage interior defenders.

Eastern has won one game in Evergreen Conference play, that one against the Lutes at Cheney. A large crowd is expected for the lats game

Gabrielsen Sends Men Thru Practice Before Final Game

by Mike Macdonald

With only one game remaining, the Pacific Lutheran University Knights have been working hard to make sure they end the season on a winning note. This past week coach Gabrielsen has put his gridders through four workouts that should have his team ready for the battle against Eastern Wash., tomorrow.

Monday night the team was on the field for an hour and a half running through plays and sharpening the passing attack. After the workout the squad saw movies of the UPS game and talked over the mistakes that were made.

On both Tuesday and Wednesday Gabrielsen put his boys through all-out offensive scrimmages where considerable improvement was shown in both their running and passing game. With the return of big Bruce Nunes to the lineup, the offensive clevelen is now at full strength with the exception of Dick Johnson, who is out with a bad shoulder.

Thursday the first team defensive squad got a chance to show its stuff against the meat squad. The meat squad, composed of the second and third teams, ran Eastern's offensive and gave the defense a good look at what they can expect tomorrow night.

The Green Giant, Marv Snell, is expected to be ready for the game tomorrow even though he had missed this week's practices due to an infected arm.

After Thursday's workout Gabe praised the club for its hard work and good hustle.

Tonight the Knights have a light workout scheduled in which they will sharpen up on some of the specialties such as kicking and punt returns. Gabrielsen had this to say about his ball players, "The team has worked hard all week and now the only thing left is to play the best football they know how and beat Eastern tomorrow.

Lutes Lose Six To Graduation

On November 12 at 8:00 p.m., six seniors will play against Eastern Washington College of Education in their last PLU football game. All are regular starters, except one.

Bruce Alexander, "Alex," as he is called by his teammates, is happily married and the father of three, the latest additions being twins. Bruce plans on going into education or YMCA work.

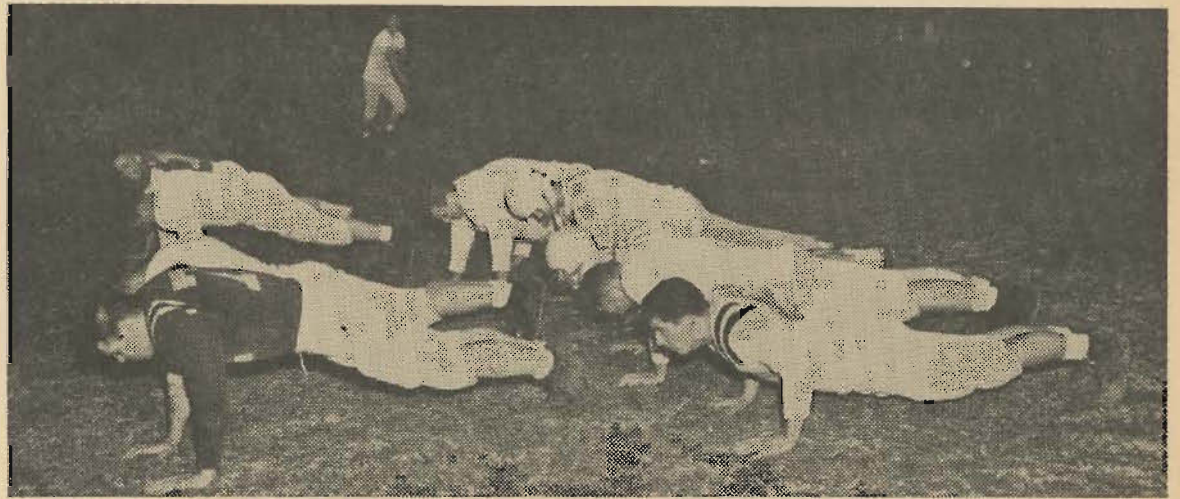
A transfer from a San Mateo J. C. championship team, Bruce Nunes has done a tremendous job at the right tackle spot. At the conclusion of this, his second year in a Lute uniform, Bruce would like to go into an accounting job.

At twenty-five years of age, Bill Lennon is the oldest player on the team. Upon graduation, Bill plans on going to Luther Seminary to prepare for the ministry. He has played two years for the Lutes.

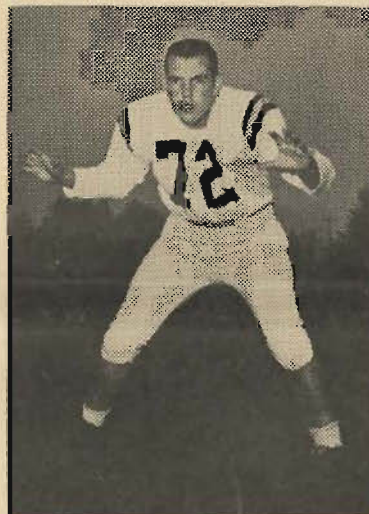
Don Keppler transferred to PLU as a sophomore from the University of Washington, and has played for the Lutes for two years.

Lou Blaesi has played all four of his school years. Lou, a defensive standout, plays linebacker and end. He plans on going into teaching upon graduation in the elementary level.

Ron Coltom started his first game this year against Eastern, causing the Savages trouble all night.



WHERE GAMES ARE WON—The practice field is the mold where plans and perspiration mix. Sweat and guts go into every PLU football practice. The Knights were snapped during warm-ups, just before contact began.



Bruce Nunes

PLU Grabs 13-0 Totem Pole Win

by Bob Mattson

Coach Jim Gabrielsen's Knights looked like "world beaters" last Saturday afternoon as they brought the Totem Pole trophy back to the Parkland campus for the first time since 1955.

Led by the running of halfback Dave Reynolds, the Knights blanked rival University of Puget Sound, 13-0, before a packed Logger home crowd.

A near-perfect defense played a major role in the Knights' second straight Evergreen Conference victory. Backs Jack Cocchi, who intercepted two passes, and Gary Nevers teamed with linebackers Don Keppler and Dave Bottenmiller to choke off the Logger passing attack.

Stalwarts in the line were John Mades, John Aune, Marv Snell, and Norm Juggert.

PLU scored once in the first period when Keith Shahan powered over from the two-yard line to score his first college touchdown. The drive was highlighted by two Doug McClary passes, one each to Bottenmiller and Bill Lennon.

A strong UPS defense twice shut off Lute touchdown drives on the one-yard line. This was the only factor that didn't indicate the rout that the game was.

Nunes Plays Hard Nosed

by Creighton Germeroth

Senior, Bruce Nunes will be playing his last college football game tomorrow night when the Lutes tangle with Eastern Washington.

Bruce was born at San Francisco, California, and later moved to San Carlos, California. He attended Carlmont High School in Belmont, California, where he was a four-year letterman in football. He also lettered three years in track, a sport in which he held the school discus record.

After spending his first two years of college at San Mateo Junior College, Bruce transferred to PLU, where he has lettered two years in football as a tackle. Bruce, who is commonly referred to as "the bear" by his team mates, lists fishing and golf as two of his favorite leisure time activities.

"The bear" is a business major and after graduation he hopes to become an accountant.



PLU SPIRIT

Last Saturday was a great day in the annals of football history for Pacific Lutheran University. The team played a tremendous game and deserves all the credit that was extended to it for its victory. It is just too bad that someone cannot shake the hand of the student body who gave its team such great support on Saturday at UPS. In two years I have never seen greater spirit exhibited during and after a PLU football game.

Now that we have once again acquired this lost spirit, let's aim it in the right direction and make PLU once again known for its tremendous, spirited rooting sections along with its championship athletic teams. I extend my hand to each and everyone of you for your great showing last Saturday. Keep up the good work.

Mark Salzman, PLU athletic director, once told Jim Gabrielsen that he played tackle for the Baltimore Colts at 160 pounds while the other tackle on the team, Big Daddy Lipscomb, tipped the beam at 285.

"That," replied Jim with a straight face, "must have been the start of the unbalanced line."

BLOCK PUNTS

Have you wondered why all the girls go for Norm Juggart, alias Jug-head? Informed sources tell me it is because of his low cut tennis shoes. . . . What is this about five girls from C.P.H.S. coming over to see Ron Ratliff and John Hanson after the game Saturday. . . . Some sort of record must have been set last week when Whitworth played Eastern. Spurlock from Whitworth threw 57 passes and completed 29 for a total of 288 yards. That is more attempted passes for a game than the pros try. . . . Rod Cillo, Randy Stime and Jerry Capps are starting a club on campus to help support all events. If you are interested, contact anyone of the three. This is open to both sexes, according to Rod.

GIVE 'EM A RIDE

Since this is the final big home game of the season we want to be sure everyone has a ride to Lincoln Bowl tomorrow night. If you are driving, be sure to fill your car with Lutes. If you haven't found riders ahead of time, just drop by the GUB when leaving and you'll find more than enough. Just tell your date to cuddle up and make room for more.—by the Knife.



PLU SENIORS PLAYING their last game tomorrow night are (top, left to right) Bruce Nunes, Bruce Alexander, Lou Blaesi, (bottom, left to right) Don Keppler, Ron Coltom, Bill Lennon.