

# The Mooring Mast

VOL. 30

PUBLISHED BY THE STUDENTS OF PACIFIC LUTHERAN COLLEGE,

APRIL 17, 1953

NO. 20

## Two One-Act Plays By Curtain Call Tonight

"Wheat Fire" and "East am East," two one-act plays sponsored by Curtain Call, will be dramatized in the SUB tonight at eight, with Marian Christensen and Glenn Johnson directing. The scene of "Wheat Fire" is set on a wheat farm in southeastern Washington. The plot centers around a city bred girl who has been misinformed about farm life. The cast includes Bob Beatty as Martin, the farmer with an eye for Anna, who is played by Kathy Hinrichs; Ursula is played by June Wigdahl and Dick Brown plays "a man". Mariah Christensen directs this play.

Jerry Slatum assists Glenn Johnson in directing "East am East," the drama of a sophisticated New York actress played by Loris Zellmer. Bob Johnson will be Steven; La Wanna Huber, DeHlah; Spencer Aust, Twig, and Bob Nielsen, Archibald.

Between the two one-act's Bev Green and Bob Fleming will perform some old-fashioned songs in a "rinky tinky" fashion.

Committee members who assisted in producing the plays are: Marion Leonard, Marian Taebe, Marlys Saiterbeck, Thelma Nygaard, publicity; Barbara Brewer, Clarice Mittelstaedt, Jean Hansen, costumes; Edith Engel, Joanne Moeller, Mary Lou McDonald, Lorna Pals, Make-up; Anita Hellbaum, Sharon Kinser, programs; Mark Freed and Paul Running, stage.

See Picture on 4

## Augustana Choir to Sing Here April 23

Singing their Tacoma concert in the PLC auditorium, the seventy members of the Augustana Choir will be presented by the Women's Auxiliary of the Lutheran Welfare Society next Thursday evening, April 23, at 8:00 p.m. Student tickets and 75 cents.

Founder and director of the choir is Henry Veid, nationally recognized conductor. He is in constant demand to judge musical events and to teach in summer sessions.

Eleven RCA Victor Red Seal records have been made by the Rock Island, Illinois choir and in May, 1952, the choir gave an hour-long ABC-TV program.

## Seniors to Show 'Post Grad Days'

Plans are now under way for the May 15 senior production "After Graduation Day." The Chapel-Music Speech Building will see not only seniors performing during this evening of entertainment, but also members of other classes and a well-known TV star, reports Vern Lesterud, chairman of the program.

Seniors featured in this year's show will be Bill Rieke, Eleanor Hansen, Herb Nove, Vern Lesterud, Bob Nielsen and Bob Johnson. A skit has also been planned.

## Band On 4-Day Tour; Stanwood First Stop

Leaving at 1:00 this afternoon, on a four-day tour, the 52 piece PLC band will start its third annual tour.

The first program will be given at Stanwood at 8:00. Residents there will be host to band members.

## Mission Meet To Be Led by Syrdal

In answer to the petitioning by one-hundred fifty students for a Foreign Mission Conference to be held at PLC this year, Dr. Rolf Syrdal will be on the campus to lead in activities in this field Sunday, April 19 to Wednesday, April 22.

Dr. Syrdal is active in inter-synodical Lutheran foreign mission activities throughout America and holds the position of Executive Director of the Board of Foreign Missions of the Evangelical Lutheran Church. He will give the chapel address Monday, Tuesday, and Wednesday mornings. On Sunday evening at the JSA meeting and on Monday and Tuesday evenings as well, Dr. Syrdal will show films on mission work in the upper SUB.

The over-all chairman of the Conference is Herb Nove, president of Mission Crusaders. Under him is the committee for displays, headed by Larry Peterson, and consisting of the following persons: Bob Haycraft, Norma Borg-

(Continued on Page 2)

Crossing the Cascades by way of Stevens Pass Wednesday morning, the group heads east to Cashmere, Moses Lake, Ephrata, Ritzville and Connel.

"Orpheus Overture," Mannin Veen, "If Thou Be Near," "Fairest of the Fair" and "Dry Bones" are among the numbers from which

BAND TOUR SCHEDULE	
Friday, April 17.....	Stanwood
Saturday, April 18.....	Cashmere
Sunday, April 19.....	Moses Lake
Sunday, April 19.....	Ephrata
Monday, April 20.....	Ritzville
Monday, April 20.....	Connel
Tuesday, April 21.....	Home

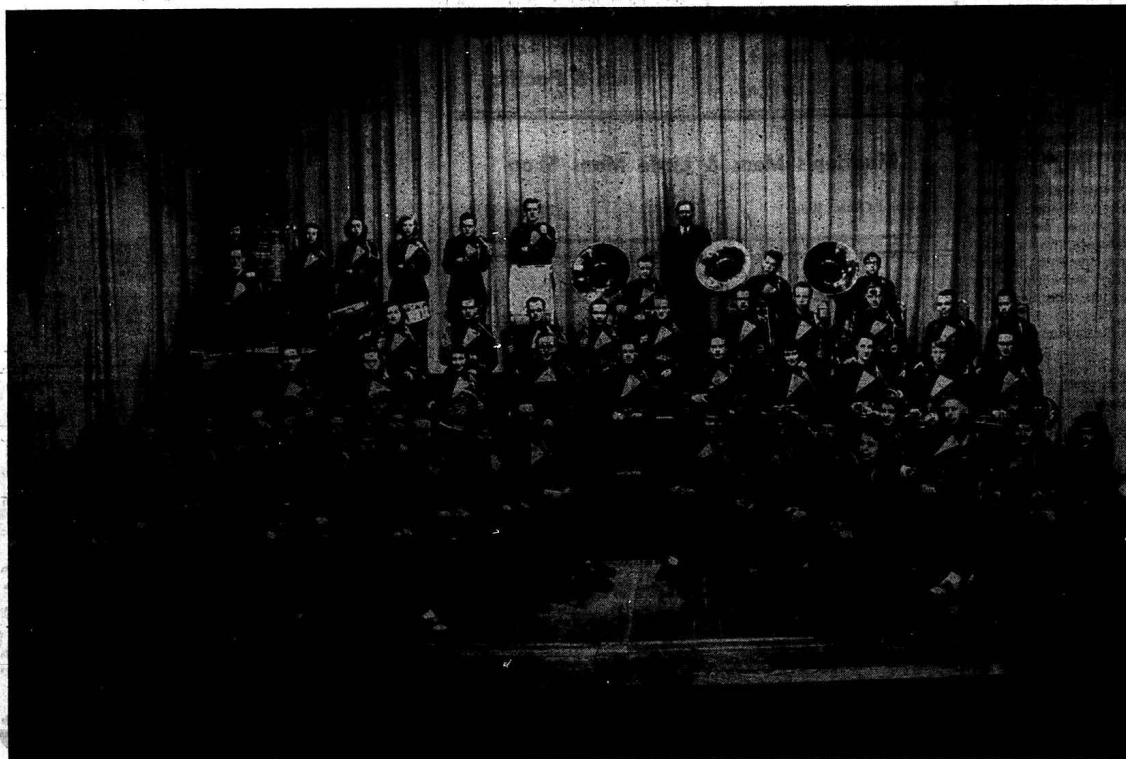
Bandmaster Harley Christophersen will arrange the concerts.

First cornetist, Paul Steen will direct the band at Cashmere. Another feature of the programs is the brass sextet which includes Marion Leonard, Glenn Hull, Bob Randoy, Joe Reitz and Paul Steen. Major-ettes Nadine Andresen and Cathy Schwerln will perform at the high schools.

Accompanying the group is Mrs. Edith Tandberg, wife of the Norwegian exchange professor, Carl Tandberg. "I'm looking forward to the trip, because it will give me

(Continued on Page 2)

## PLC's 52-Piece Concert Band



# The Mooring Mast

Published every Friday during the school year by students of Pacific Lutheran College  
 Entered as second class matter, October 2, 1952, at the Post Office at Parkland, Washington  
 Office: Student Union  
 Subscription price—\$1.50 per year  
 Telephone GRanite 8611  
 Printed by La Crosse Printers, 118th Pacific Ave.

## Rev. Olson Completes Talk On Prejudice

Dear Lutes:  
 Time ran out on me in Chapel a few mornings ago when I gave that talk on prejudices and so I didn't have an opportunity to read these lines entitled "Clearance Sale." Looking at them again after Chapel, the thought struck me that the thoughts expressed in them were just too good to just file, so here they are for whatever they are worth. It strikes me that if everyone of us would really ponder them a bit and then put the pondering into action, life here at P.L.C. which is very good indeed, would be much better still: What do you think?

Cordially,  
 Roy E. Olson  
**CLEARANCE SALE!**  
 A lot of Prejudices which have ceased to be of use to me;  
 A stock of envy of the rich,  
 Some slightly shopworn jealousy;  
 A large supply of gloom that I shall have no use for from today;  
 I offer bargain; who will buy?  
 Come, bid, and take the stuff away!  
 A lot of wishes I've outgrown,  
 A stock of foolish old beliefs;  
 Some pride I once was glad to own,  
 A bulky line of misfit griefs;  
 A large assortment of ill-will,  
 A job lot of bad faith and doubt;  
 Harsh words that have their stings are still;  
 Come on, come on I'm closing out. I need more room for kindness,  
 For hopeful courage and good cheer.  
 For sale, the hatred I possess,  
 The dark suspicions and the fear;  
 A large supply of frailties I shall have no use for from today.  
 I offer bargain—who will buy?  
 Come, bid, and take the stuff away!

Author Unknown

## Alumnae Luncheon For Seniors Sat.

All senior girls are invited to attend the Alumnae luncheon to be held Saturday, April 18, at one o'clock in the SUB. This annual affair, given by the Alumnae Club, is to encourage all graduating girls to join the club. By becoming a member of the Alumnae Club, they can keep in touch with affairs of the college for the rest of their lives.

General chairman of the luncheon is Mrs. Afton Schafer. Other committees include program, Mrs. Alice Wright; decorating, Mrs. Nina Larson and Mrs. Bernice Peterson; planning and serving, Mrs. Grace Lane Fink, Mrs. Orna Schuster, Mrs. Maria Larson, and Mrs. Lorraine Larson.

## M. Thompson In Recital Sunday

Miss Marguerite Thompson, junior at Pacific Lutheran College, will present a vocal recital Sunday, April 19 at 3:00 in the Student Union Building.

The talented contralto will present a varied program of both romantic and classical selections. The program will be as follows:  
 "Invocation of Orpheus," by Jacopo Peri; "Lasciatime-Morire," by Claudio Monteverdi; "Der Schmied," "Die Mainacht," "Vergebliches Standchen," by Johannes Brahms.  
 "Silent Strings," by Granville Bantock; "Where Blossoms Grow," by Gertrude Sans Souci; "Jig Elsker Deg" (I Love Thee), by Edvard Grieg.  
 Accompanying Miss Thompson at the piano will be Miss Jeanette Foss.  
 Mr. Dick Svare will assist Miss Thompson at the recital. He graduated from Pacific Lutheran College with the class of 1950.

## Band . . .

(Continued from Page One)

the chance to see some of this country before we go back to Norway, and because I love music," Mrs. Tandberg commented. Rev. Roy Olson will also accompany the band.

Instrumental in establishing the annual tour, Director Christopher came here in 1950. The band was composed of 15 members when the first group toured Northern Washington three years ago.

The 52 band members are: Nadine Andresen, Priscilla Asper, Alan Berglund, Kathy Biery, Dick Brandt, Steve Brandt, Darlene Bronkhorst, Faith Buelتمان, Sherman Byrne, Eldon Davis, Ilene Drivstuen, Joanne Emtman, Mary Estergreen, Donna Lou Erickson, Gerald Farness, Reid French, Clifford Hall, Roseanna Harthil, Charles Heimblinger, Ellen Hessen, Harold Hillesland, Tom Householder, Barbara Howard, Marlene Hovland and Glenn Hull.

Others include: Stanley Jacobson, Doris Johnson, Adrian Knutson, Diane Knutzen, Marilyn Krug, Herbert Lay, Bill Leed, Marion Leonard, Ellen McConnell, Dick Myking, Floyd Ohman, Bernice Olson, Roger Petersen, Robert Handoy, John Reay, Joe Reitz, Leland Roseburg, Cathy Schwerin, Jerry Sheffels, Ted Slek, Bob Sorensen, Helen Smeby, Paul Steen, Beverly Tranum, Roy Tribe and Jeanette Walter.

## Mission Meet . . .

(Continued from Page 1)  
 ford, Bobbe Birkedal, Dave Bjerkestrand, Carol Brace, and Ken Oscarson. The theme, "Christ in the Nations" will be carried out by displays in the various buildings on the campus, each display emphasizing Christ in a different nation.

Students who wish to confer with Dr. Syrdal may make appointments and do so in the Student Body office.

**Art's Shoe Shop**  
 Garfield Street  
 QUALITY  
 REPAIRING - DYEING

## Stop In at VERN'S

for a  
 DELUXE HAMBURGER  
 Old Fashioned Fish & Chips  
 Home-baked Pies & Cakes  
 Full Fountain Service  
**Ninth & Pacific**

## Madden's Mens & Little Mens Shop

Parkland Centre Bldg. GRanite 4242

## MEET YOUR FRIENDS AT

## JOHNSON DRUG

GRanite 7333 Parkland Centre

## THREE-DAY SERVICE.

On Laundry, Cleaning and Repairing  
 24-Hour Service At Plant

## Fashion Cleaners

Pick Up and Delivery  
 GARland 3372 3820 Yakima

## Glad About Town

The Adelphian Concert Choir of the College of Puget Sound entertained an enthusiastic audience in a very informal concert at CPS's Jones Hall Auditorium last Friday, April 10. The Adelphians have recently returned from a two-week tour, and this was their last home appearance for the year.

Three soloists shared the program with the choir. Two were students: Ardys Reed, a capable violinist, and Katherine Standifer, a soprano who possesses a lustrous voice, but whose singing, though admirable secure, lacked animation. Miss Margaret Myles of the CPS music faculty displayed a contralto voice of great range and genuine interpretive ability, particularly in her tone coloring in Debussy's "Beau Soir."

A varied program of sacred songs, spirituals, sea chanties, and novelty numbers, was sung by the thirty Adelphians, who appeared in tuxedos and white formals. Director Bruce Rodgers drew a well-balanced, bright tone from his group, but the higher potentialities of a small choir—true precision, beautiful pianissimo, near-perfect blend—were not often approached. The sacred songs received rather superficial interpretation, occasionally through oddly inappropriate dynamics. However, the enthusiasm of the singers made for good listening in the lighter songs, some of which included clapping and pantomime. On the whole, it was a fine, successful evening of entertainment.

—Ed Kennedy

PATRONIZE OUR ADVERTISERS

## PARKLAND XXX DRIVE-IN

Parkland Two Blocks North on Mt. Highway

## GENERAL AUTOMOBILE REPAIRING

## GLADIATOR GARAGE

122nd & Pacific GRanite 9946

## EQUITENNIAL HORSE SHOW

Plenty of Action!  
 Kent Erickson - Clarence LaCrosse  
 Producers

Saturday & Sunday, April 18th - 19th

1:30 Daily

## BAR NONE ARENA

SOUTH 84TH & PINE TACOMA

TUNE IN YOUR OWN  
 CAMPUS RADIO THEATRE  
 6:30 EVERY WEDNESDAY NIGHT

★ College of Puget Sound  
 ★ Pacific Lutheran College  
 ★ Shelton High  
 ★ Lincoln High  
 ★ Sumner High  
 ★ Puget Sound High

KMO  
 1950 on Your Side

★ Visitation High  
 ★ Federal Way High  
 ★ Clancy Park High  
 ★ St. Leo's High  
 ★ St. Martin's College

Sponsored By  
**TACOMA CITY LIGHT**

## Headquarters for

Quality  
 WATCHES  
 DIAMONDS  
 JEWELRY  
 SILVER

Since 1889

## MIEROW'S

1105 Broadway  
 Tacoma

### 3 Tie for First In Volley Ball

Volleyball	
Ivy Hall	4
Tacoma	4
Central	4
De Jardines	3
Western	2
Clover Creek	1
Tornadoes	0

Thru games of last Tuesday night Ivy Hall, Tacoma, and Central are all tied for first place in the intramural volleyball league with identical records of four wins and one loss. Still running close behind the leaders are the DeJardines with 3 and 2 and Western with 2 and 1. It is too soon to predict anything concerning the league, but Tacoma with Len Nelson, Donn Koesler and Dick Larson offers an imposing obstacle for the rest of the league as well as Central with Big Nick Kelterman and Paul Forseth. In contrast is the Ivy Hall varsity of six that play as one, a tough bunch to beat as evidenced by the records.

The league has finally settled down to seven teams of the nine that started the league. Two of the three entries from Central, the Bibs

## DANIELS HARDWARE

\* \* \*

ON THE HIGHWAY CORNER  
PACIFIC AVE. & GARFIELD

### Sensational New Advance in Golf Clubs



**Every club has identical contact feel... amazing ease of shot control**

*They will do more to save you strokes than any clubs you ever played.*

Using an entirely new and exclusivescientific formula, Spalding creates these clubs with centers of gravity in absolutely coordinated sequence. Every wood, every iron, has identical contact feel... gives you amazing ease of shot control!

You make tough shots look easy. Your timing is uniform. You get the ball away straighter. You shoot for the pin instead of the green. You get lower scores, consistently.

See your Spalding dealer or golf professional.

### WAA Tennis Tourney Will Find Top Player; Games Start Tomorrow

With Carol Hintze as manager, W.A.A. is sponsoring a women's single tennis tournament beginning this Saturday at 9:00 a.m. on the tennis courts near the gym. Those who will be competing for the title of "Top Tennis Player of 1963" include: Myrna Prannekuchen, Jane Peterson, Bernie Olsen, Joan Johnson, Marlene Hovland, Joan Murray, Bobbie Birkedahl, Myrna Berg, Faith Bueltman, Janet Olsen, Ruth Sather, Kathy Biery, Donna Watkins, Joan Emtman, Doris Johnson, Nancy Shinkoeste, Carol Edlund, Donna Simkins, Marcia Knott, Laetitia Basegore, Donna Dunn, Irefen Jeter, Lauretta Fraser, Anze Stray and Phyllis Graham.

The winner and runner up will each receive a prize. Spectators, come and give a yell for your favorite tennis player!

and the Married Men, have dropped from the league. All of the games of these teams will not count on the league standings but only as practice games.

**Badminton Tournament**  
Only one of the first round games had been played thru Tuesday in the singles badminton tourney. Dick Larson of Tacoma, won over Dick Nodtvedt of Western: 15-11, 10-15, and 15-12. All first round games must be completed with the scores turned in to Mr. Salsman by Saturday, April 18.

**Spring Sports**  
A reminder that men interested in any intramural spring sports can sign up now with Mr. Salsman for Horse-shoes, Tennis, Golf, and that the intramural Track meet will be held about the middle of May.

### Tennis Squad Blasts SPC 6-1

After a shaky start in its season's opener against Central Washington, the Lute tennis squad recovered quickly and blasted Seattle Pacific 6-1, at the Falcon courts Wednesday.

The PLC-Central match was halted because of rain last Friday at Ellensburg, with the Wildcats leading 3-1. The one singles and two doubles matches remaining will be made up when Central plays here next month. Victories in these three matches would give the Glads a victory. Pete Luvaas, who holds top spot on the ladder, won the lone match for PLC.

In the one-sided contest at Seattle, Ivan Seppals, number three man, was the only Lute who failed to win. He lost a tough one, 8-6, 6-2 to Gerald Northrup of SPC.

Results of the other matches are as follows, with PLC players listed first: Singles—Pete Luvaas, def. Paul Lobeell, 6-0, 6-1; Jim Jaeger, def. Phil Chin, 6-2, 6-0; Carol Hintze, def. John Bergman, 6-1, 7-5; and Adrian Knutsen def. John Cunningham, 6-2, 6-1. Doubles—Luvaas and Hintze def. Lobeell and Northrup, 6-3, 4-6, 6-2; and Jaeger-Seppala def. Chin-Bergman, 6-1, 3-6, 6-3.

Tomorrow the Gladiator racket-wielders will travel to Seattle again, this time to take on the highly rated Seattle University Chieftains.

### ICC Note

John Rydgren, chairman of the committee formulating plans for the recreation room to be made in the lower Old Chapel, reported that it is still in the preliminary stage and that much work is yet needed. Alpha Phi Omega is also to help in this undertaking, according to John.

Lloyd Eastman reminded all (Continued on Page 4)

## Top Man on the Totem Pole

Last Saturday, the 11th, saw more than the Daffodil Parade and rain, although the dampening quality of the latter mentioned obscured most of the happenings. The other event to which we make mention was the running of the three and a quarter-mile marathon race in Tacoma. Although the roses (or daffodils as the case may be) went to the Brothers Rader of Lincoln High, Tacoma and Washington State College, more than the thorns can be claimed by a Lute, one Ted Slek by name as he placed third in a field of thirteen. When one considers that these same brothers are two of the best in the state, the sun comes out in Parkland.

Tomorrow, if the same sun shines; will see the Lute thin-clads in their initial offing of the season at CPS. Of course Saturday is the authority but Oliver Magnuson, letterman, should take the discus-throw and place well in the shot-put-with newcomer Dave England. Ols has been getting the discus out around 130 feet and both he and England have been dropping the shot about 40 feet. Ted Slek figures to win the mile and two-mile events and may possibly even run the 880. Dick Brown and Stan Jacobson will prove strong in the half mile—possibly turning in times of 2:10, that should be good enough to win. Over all, the meet should be extremely close with a slight edge going to the Loggers.

By the way, you golfers and those of you who aren't, had better get that eye sharpened up. We have it that the Lettermen's Club is about ready to spring its annual Hole-in-one contest. In this event even the most amateur is on an even basis with the best. Big prizes, so we hear. Keep it in mind.

### Lutes Face Chiefs Sat.; WWCE Next

The Lutes face their toughest opponents tomorrow afternoon in Seattle when they meet the Seattle University Chieftains.

Seattle, now minus the O'Brien twins, still has a powerful baseball team. Kelly and Pastornicky are the top hurlers with the Chieftains and they have a well-balance team behind them according to Harshman.

Harsh said Wednesday that Ron Johnson and Vern Hanson will probably draw starting assignments. Don Chesterfield also may see mound action.

Next Thursday afternoon it's

### Fox . . .

(Continued from Page One)

more precise. Possibly the heaviest work on the program was the Sonata on the Ninety-fourth Psalm by Reubke, which was played with great feeling but which seemed not to be as much a vehicle for expression for Virgil Fox as had been the Bach and Handel. The less towering numbers were played with finished shading and penetration; often the listeners deemed it too mundane to clap their hands and hence remained silent in awesome appreciation.

As the audience joined the organist in closing the program with the singing of "The Church's One Foundation", one could not help but feel that a portion of humanity, led by a scintillating genius, was offering in praise of God an example of the high achievement of which is it capable.

PLC versus Western Washington at Tacoma's Cheney Field for a conference double-header.

**PARKLAND GRILL**

DINNERS - SANDWICHES - SALADS  
HOMEMADE PIES - CAKES & COOKIES

**Open Sunday 12 Noon till 8:00 p.m.**

**Campus capers call for Coke**



Rehearsals stretch out, for the big Glee Club tour is ahead. Work and worry call for a pause—so, relax... refresh with ice-cold Coke.



BOTTLED UNDER AUTHORITY OF THE COCA-COLA COMPANY BY  
**COCA-COLA BOTTLING, Inc.**

"Coke" is a registered trade-mark.

© 1953, THE COCA-COLA COMPANY



## Daffodil Float Earns a First

PLC's entry in the educational division of the Daffodil Parade won a first prize last Saturday. A certificate of recognition is forthcoming from the Puyallup Daffodil Committee.

"Thanks are due to many," claims Bob Johnson, general chairman. "Without the support of the student body and the cooperation of the local merchants, the entry would have been impossible".

"Those who worked all the last night on the float were: Eric Johnson, faculty adviser, Mrs. Rhoda Young, Carrol Kastelle, Ron Chase, J. P. Carlstrom, Jerry Sunby, Ernest Johnson, John Amb and Ed Roakvam, who was also pilot for the float. Ed sacrificed his sleep for 36 hours."

Dean Hauge expressed the thanks of the faculty and student body to all the people who had given their time to this project at Chapel Monday.

The planning of the float was done by Professor Robert Johnson and Bob Johnson. Technical drawing and design was also done by the professor, Jerry Sunby and Carrol Kastelle did the framing work. Roakvam did Mt. Rainier, Sig Tollefson and Ron Chase did the Horn of Plenty. Lettering was done by Shirley Molter. Harold Hendrickson and Bob Johnson solicited.

J. P. Carlstrom constructed the industrial scene, and the CMS was done by Carlstrom and Marian Taebe.

## Campus Calendar

Week of April 17-24, 1953  
Friday, April 17:

8:00—Curtain Call Night, SUB Saturday, April 18:

9:00—WAA Tennis Tournament; 7:00—Ski Trip, Steven Pass; 8:00—American Chemical Society Tri-School Convention, S-108; 1:00—Alumnal Luncheon for Senior Girls, SUB; 7:00—Junior Class Cruise Puget Sound.

Sunday, April 19:

Missionary Emphasis Week, Rev. Syrdal, Minneapolis, Speaker; 3:00—Recital, Marksville Theatre, S.D.E.

Monday, April 20:

12:10—DRG, Day Room; 12:30 Lettermen, M-109; 4:00—WAA, A. 5:00—Tassels, Fourth Floor Lounge; 6:45—Prayer Meeting, CMS-B; Missionary Emphasis Week.

Tuesday, April 21:

12:30—Mission Crusaders, TC 6:00—Spurs, Second Floor Lounge; 7:00—LSA Council, L-116; 7:30—Linne Society, S-108; 9:15—Holly Hall; Missionary Emphasis Week.

Wednesday, April 22:

6:30—Blue Key, ASB Office; 4:00—WAA, Gym; 7:30—Ski Club; AWS, SUB. Missionary Emphasis Week concluded.

Thursday, April 23:

12:30—Campus Devotions, TC 6:30—APO, CMS-122; 6:30—Student Council, ASB Office; 8:30—Alpha Psi, Speech Office; 9:30—Curtain Call, CMS; 8:00—Augustana College Choir Concert, Rock Island, Ill. CMS.

Friday, April 24:

9:00—Alpha Sigma Lambda, South Tacoma Roller Rink; LSA Retreat, Luthershaven, Couer d' Alene, Idaho.

### GUIDES NEEDED SUNDAY

Guides are still needed to take on campus tours the anticipated 300 Luther Leaguers who will be LSA's guests on campus Sunday afternoon and evening. Anyone interested is asked to contact either Erv Severson or Bob Keller.

### NEAL E. THORSEN

TRICKS - JOKES - MAGIC  
Costumes - Tuxedos - Serpentine  
926 1/2 Broadway MA 4861

### WEDDINGS - CORSAGES FUNERALS

STELLA'S FLOWERS  
Artistry in Flowers  
Parkland Center GR 7863

### Patty Ann Bakery

9 a.m. to 9 p.m.  
Opposite Nat'l Bank of Wash.

## "Moonlight" Cruise On Tap Sat. Night

Between 7 and 12 o'clock Saturday evening, April 18, the Junior class will sponsor a cruise to Quarter Master Harbour on the boat, The Gallant Lady. The boat will leave from the Tacoma Boat Mart and a program will be given on arrival at the Harbour. Free hot dogs and cokes will be served aboard ship.

The Junior class not only guarantees a good time for all, but also a clear beautiful night with a bright full moon. "How can any one afford to miss?" ask Don Kelth, president.

## PLCites To Do Campus Spring Cleaning Apr. 28

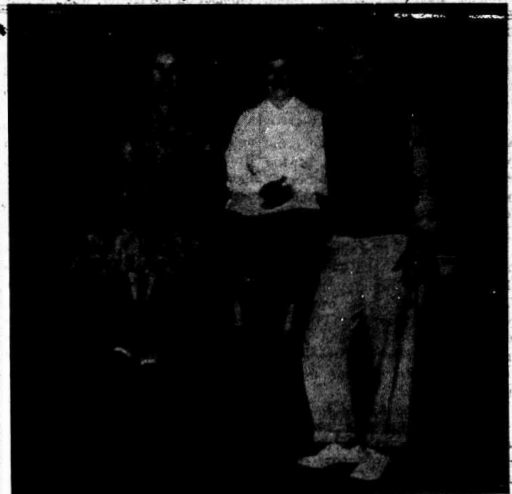
Shovels, rakes, and working clothes will replace pencils, books and regular campus attire on Tuesday, April 28, as the student body of PLC sacrifices a day of classes to improve the appearance of the college grounds, Campus day. After a morning of hard work, supervised by Alpha Phi Omega, the students will eat lunch, picnic style and then spend an afternoon at Bressman's park on Lake Spanaway engaging in activities sponsored by Blue Key. Dinner will be served at the park at a nominal cost for day students; dorm students will not be charged.

## Memorial Service Held For Dr. Tinglestad; Dr. Eastvold Sends Message

Telegram to: Mrs. O. A. Tinglestad 309 Center Street Decorah, Iowa

News of Dr. Tinglestad's death has reached us. Memorial Services were held at the College on Wednesday morning at ten a.m. Administration, Faculty, staff and students all joined with thanks and praise to God for the great leadership Dr. Tinglestad gave to home, church, and state through Christian Higher Education. We worshipped in the text found in Job 19:25-27. Our special greeting to you is found there. We thank God for our friend, vindicator, and comforter. Dr. J. C. K. Preus will bring greetings at the funeral service from all of us at the College. Mrs. Eastvold joins me in personal greetings to you in your bereavement and in your blessed hope. Memorial gift to be announced later. Blessed be the memory of this fine brother, friend, and husband.

S. C. Eastvold



CURTAIN CALL'S PLAY "East am East" featuring Lorje Zellmer, LaWanna Huber and Bob Nielsen. —Photo by McKewen

## Grace Foege Will Rule On May Day

Grace Foege, senior, has been chosen Queen of the May for this year's May Festival. Her attendants will be Nan Aageson and Marilyn Djarf. Other results for class attendants will be announced when the Mast can give biographical justice to each girl.

### ICC Notes . . .

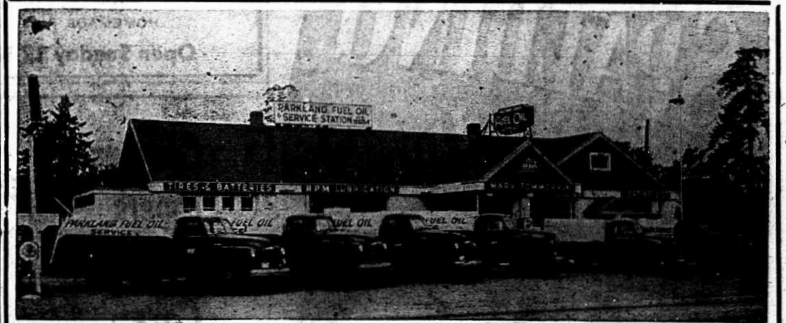
(Continued from Page 3) representatives that at the next ICC meeting the scheduling committee will start scheduling activities for the coming year. This committee will apportion out to each club or organization certain activities so that in the future there will be more variation in the productions on the campus.

### \$5 Tickets Going Fast

As of noon yesterday, one half of the special \$5 Drama-Music Festival tickets had already been sold. Karl E. Weiss, co-ordinator of the festival, said that beginning yesterday morning "the pressure was on."

### DRG Plans Weekend At Lake Wilderness

Look here, day girls! For the fee of \$3.00 any one of you can enjoy a weekend of fun at beautiful Lake Wilderness. When is this event? May 15, 16 and 17. For more information see Nadine Anderson or Eula Daily.





LET US  
CARRY THE BALL  
ON YOUR HEATING OIL

Enjoy That "PLUS" Service  
Lubrication - Tires - Batteries  
Auto Parts

MARV TOMMERVIK'S

# Parkland Fuel Oil Service

120th & Pacific Ave. Granite 8684

### PATRONIZE OUR ADVERTISERS

**Centre Cleaners**  
Laundry Service  
Parkland Centre Bldg.

To Go  
Shakes - Sundies  
**McCAY'S**  
ICE CREAMERY

**Top of the Ocean**  
In Old Tacoma

**C. Fred Christensen**  
STATIONER  
913 Pacific Ave. RR 4629  
Tacoma, Wash.

**DILL HOWELL**  
Sporting Goods  
929 Commerce St. Tacoma  
MA. 5665

**The Hob Nob — "House Of Interest"**  
ARTS — CRAFTS — MODEL SUPPLIES  
Located at the **PARKLAND DONUT BAR**

**GROCERIES & MEATS**  
**RUSLER'S MARKET**  
231 Garfield Street Granite 8560