



VOL 7 NO 23 Pacific Lutheran University April 2, 1970

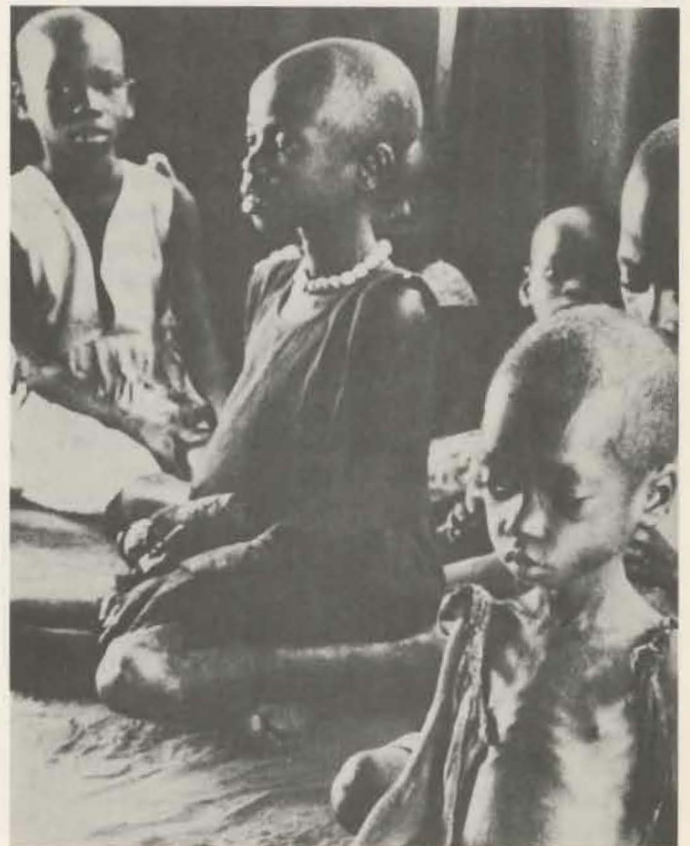
# PLU Hunger Symposium Begins Today

Problems of world hunger and over-population will be the subject of a student-sponsored symposium at Pacific Lutheran University Friday through Sunday, April 3-5.

Experts on different aspects of the subject have been slated for a series of lectures and discussions. Among them are Edward Hekman, an administrator for the United States Department of Agriculture; Jack Lealey, American Freedom from Hunger Foundation Administrator; Dr. Georg Borgstrom, professor of biology at Linfield College; and Rev. L. David Brown, former youth division director, American Lutheran Church.

The symposium, which will be held at Eastvold Auditorium, will open Friday at 1:30 p.m., with a discussion on the implications of the population explosion by Dr. Crook. Youth's role in the solving of the hunger problem will be explored by Healey at 3:30 p.m.

Food production capabilities will be the subject of a talk by Dr. Borgstrom following an afternoon luncheon in Chris Knutzen Fellowship Hall.



Hunger throughout the world

continued on page 2

## ROUNDTABLE

PHILIP NORDQUIST (hist.) will be the guest speaker at Ebenezer Lutheran Church in Lake Stevens, Wash., Sunday, April 12. . .the event is Christian College Sunday. . .Lake Stevens is his hometown. . .JON OLSON (alumni dir.) was recently elected annual fund chairman for District 8 of the American Alumni Council, which includes Alaska, B. C., Wash., Ore., Idaho and western Mont. . . in recent weeks he has attended alumni gatherings in Portland and Spokane. . . this week he and MILTON NESVIG (U. Rel.) are attending the Public Relations Association Convention in Minneapolis. . . THEODORE KARL (speech) recently served as master of ceremonies at the Washington State Speech Association Conference in Yakima. . .he was also a speaker at the National Secretary's Association meeting in Tacoma not long ago. . .MARK ANDERSEN (admissions) bid farewell to the campus this week after four years as a student and three years as admissions counselor . . .he is now at Fort Sam Houston, Tex., where he is being indoctrinated in the ways of the U. S. Army Medical Corps. . . WILLIAM R. HUTCHEON (bus. ad.) recently attended the Western Division Academy of Management Conference in Salt Lake City, Utah. . .MRS. THERES HEMMEN (nursing) attended a series on "Current Concepts in Nutrition" conducted by the continuing Medical Education Division, University of Washington School of Medicine. . .last week DR. J. A. SCHILLER (soc.) was in Washington, D. C. attending the meeting of the advisory committee to the Social and Rehabilitation Services Division of the Department of HEW. . .on his return he made stops in Columbus, Ohio and Chicago to interview prospective faculty members in the social sciences. . .DR. WILLIAM GIDDINGS (chem.) and DR. GEORGE ARBAUGH (phil.) attended a conference on liberal studies sponsored by the Committee on Liberal Studies in Seattle last week. . . WALTER SCHNACKENBERG was taken suddenly ill last week with a minor heart ailment he is doing fine and resting comfortably in Tacoma General Hospital room 3312. . . We wish him a most speedy recovery. . .



The PLU Choir of the West will appear in concert at the Seattle Opera House Friday, April 17, at 8:15 p.m. The event is the choir's Seattle "On to Bergen" concert.

HUNGER SYMPOSIUM cont. from page 1

Saturday's agenda includes a discussion by Hekman at 10:30 a.m. on hunger in America and what can be done, followed by a poetry-music session on the campus quadrangle at 1:30 p.m. Rev. Brown will discuss the theological aspects of the hunger problem at 3 p.m.

Films on hunger and population, a dramatic scenario directed by Prof. Richard Arnold of PLU, and a panel of the guest speakers will comprise the program between 7-10 p.m. Saturday evening.

The Sunday morning service at PLU, the final symposium event, will include a litany for the hungry written by Joe Bash, youth division, ALC, and a sermon by Rev. Brown.

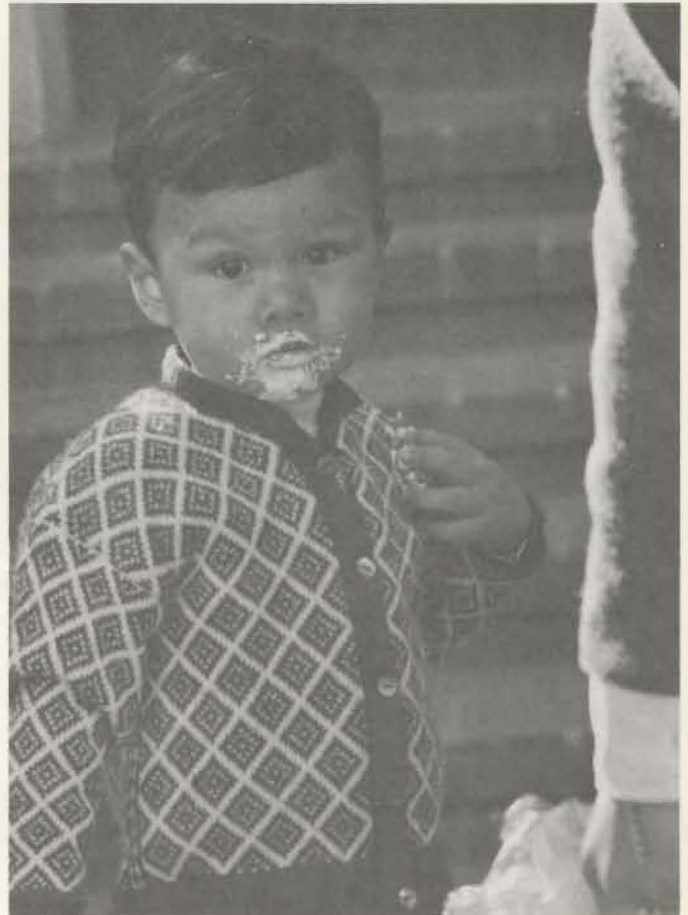
Students from nearby colleges and universities, as well as the general public, have been invited to attend the sessions, according to James Hushagen, chairman of the symposium committee.

\* \* \* \* \*

# Youngsters Enjoy Easter Egg Hunt



Delighted children surround President and Mrs. Wiegman following Easter egg hunt on campus Sunday.



Egg-on-the-face is a temporary problem for Billy Arbaugh at Easter egg hunt Sunday.

## CHILDREN'S BOOK ON EXHIBIT IN LIBRARY

An international exhibit of children's books is being shown in the Southwest Gallery of the Mortvedt Library April 1-30. The display commemorates the birthday of Hans Christian Andersen on April 2 and is from the PLU children's collection and the collection of Grace Blomquist.

## BIRTHDAYS

|  |         |
|--|---------|
| Judy Richardson                        | April 9 |
| Grace Blomquist                        | 10      |
| Stanley Vikesland and<br>Allene Wilson | 11      |

\*\*\*\*\*

Dear Dr. & Mrs. Wiegman,

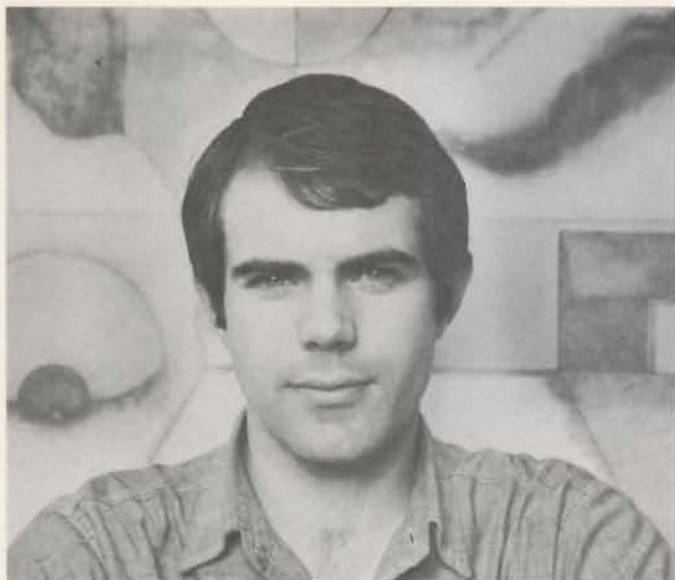
We had so much fun at your Easter Egg Hunt today! We especially enjoyed because it was a new thing for us. Thank you for showing your Easter joy by giving so many children happiness! We hope you had a Happy Easter too!

Sincerely,  
Your friends,  
Brenda  
&  
Sheila Huber



"Sorry, pal. all my records were lost in the flood!"

# Tomsic Featured In April Art Exhibit



An exhibition of the paintings and drawings of Walt Tomsic will be offered by the University Gallery for the month of April. This work should be of particular interest to the campus community as the artist will be joining the faculty starting with second session of summer school.

Tomsic's work utilizes many current idioms in painting, but always arrives at somethings unique and individual. Private symbols from a personal world of muted color frequently emerge as biting social comment of the contemporary scene. Blurred images combine with flashing lights to form symbolic monuments and shrines dedicated to man trapped by his own devices and distorted ambition.

Tomsic will be joining the faculty as an assistant professor of art and graphics coordinator for the university. In the latter position he will serve as designer for many of the promotional items produced for off campus distribution as well as much of the printed material used on campus.

At the present time Mr. Tomsic is director of visual arts studies at Prescott College in Arizona. Previously he taught at Arkansas State University and worked as a freelance designer. He received his M.F.A. degree from University of Colorado.

## GAMMA CHAPTER TO HONOR MRS. WIEGMAN

Mrs. Eugene Wiegman will be honored by the Gamma Chapter of Pacific Lutheran University at a Mother-Daughter luncheon Saturday, April 18.

The luncheon will be held at the Lakewood Terrace Restaurant beginning at 12:30 p.m.

Menu includes braised chicken breast in Burgundy, trio salad, and hamburger with French fries.

Reservations may be made by calling Linnea Hillesland, Marie Korsmo, Judy Kvinsland, Marion Lundgaard, Nan Nokleberg or Charm Van Beek.

The reservation deadline is Wednesday, April 15.

\* \* \* \* \*

## ELLEN SCHNAIBLE FEATURED IN SENIOR RECITAL AT PLU

Soprano Ellen Schnaible will be featured by the PLU music department in a Senior Recital Sunday, April 5, at 4 p.m. in Eastvold Auditorium.

Miss Schnaible, a candidate for a bachelor of music degree in vocal performance, will be accompanied by Philip Nesvig.

The program will feature music of contemporary American composers: Emily Dickenson poetry set to music by Aaron Copland, music of Samuel Barber and a modern interpretation of a visit to the mental institution of Saint Elizabeth's by Ned Rorem.

## ALPHA PSI OMEGA PRODUCTION POSTPONED

"The Physicists," originally scheduled to be presented by Alpha Psi Omega April 9-11, has been postponed.

The new production dates are April 23-25.

The spring musical, scheduled for that date, has been cancelled.

# PLU Thinclads Set 5 New School Marks

Five Pacific Lutheran University track records were broken at Tacoma's Spanaway Park last Tuesday as the Knights outclassed Seattle Pacific 83-62.

PLU's sparkling new array of cinder-men was headed by Rob Gray, senior distance man, who set new school standards in the mile and two-mile.

Freshman Glen Higgins won the 100 and 220 yard dashes, the long jump and anchored the victorious 440 relay team which set another school mark.

Freshman John Oberg set a school standard in the 440 intermediate hurdles but finished second, and Mike Greer, another frosh, finished second in the pole vault with a new school mark.

Junior Phil Tundel's winning javelin toss was not a PLU record, but exceeded the current listed Northwest Conference mark.

Freshman Dan Pritchard, senior Randy Jorgenson and junior Carl Peterson swept the shot put competition (winning toss 47' 6½") and Pritchard, sophomore Stan Pietras and Tendel were 1-2-3 in the discus (winning toss 145' 1½").

The Lutes also won the 120-yard high hurdles and the high jump.

Tuesday's record assault gave the 1969 squad seven new school marks in the first three meets of the season.

Saturday the Lutes meet Pacific at Spanaway Park, 1:30 p.m.

\* \* \* \* \*

FOR SALE

The University has a surplus 1966 Ford Custom V-8, 4-door white sedan with radio and automatic transmission. If interested please contact Mr. Phillips in Maintenance.



John Oberg takes the baton from Neil Martin on the second leg of the record setting 440 relay race last Tuesday.

## RANDY SENN EARNS ALL-AMERICAN SWIMMING HONORS FOR SECOND TIME

Senior Randy Senn returned this week from the NATA National Swim Meet in Minneapolis with an All-American rating for the second year.

Randy gained the status by finishing second in the 50 meter freestyle. The top three places in each event make All-American.

Senn also placed fourth in the 100 meter freestyle and sixth in the 200 meter breaststroke to give PLU 33 team points.

Diver Dave Hanson also entered the meet, but was injured and did not place.

\* \* \* \* \*

CHECK THE LIBRARY. . .

78 RPM records--left to be put on tape in the library audio-visual department--please contact Faye Lundblad.

MEMO TO FACULTY

I had the privilege of attending this year's National Conference on Higher Education (American Association of Higher Education) in Chicago recently. The theme was "The Troubled Campus: Mandate for Change". The Keynote speaker, Dr. Buell Gallagher, cataloged the principal causes.

The Conference then took up these factors related to the reason for the "troubled campus" and discussed them in depth. I was most impressed with the topic, "What changes are needed to secure control of the quality of the environment" in which our own Sen. Henry Jackson, Mr. Ralph Nader and Chancellor Weidner of the Univ. of Wisconsin, Green Bay, participated.

Another challenging and pertinent topic centered on "Who should decide who goes to college" and "Who should go to college". The third major area of concern focused on "How should higher education be financed"--and "Who shall pay the bill for higher education--society or the individual?"

I have placed in the faculty library reading room, L-102, copies of all of the speeches and discussions which were published and made available at the conference together with the program which will serve as a guide to the papers. You are welcome to read those papers which may be of special interest to you.

A. Dean Buchanan  
Vice President--Business and Finance

\* \* \* \* \*

LUTE DIAMOND SQUAD OFF  
TO A SLOW START

After scoring eight runs in a 10-8 loss to Whitworth in the season's baseball opener, PLU hitters have fallen into a team slump, scoring only one run in the past four games.

The drouth at the plate has resulted in a 7-0 and 12-0 losses to Eastern Washington, a 6-0 defeat by Pacific University, and an 11-1 loss to Linfield.

Senior Doug Nixon is the club's leading hurler to date with a 3.20 earned run average after five innings work. Center fielder Ron Toff is leading the hitters with a .357 batting average, two triples and three RBI's.

\* \* \* \* \*

Lowell W. Culver, Director of the University's Urban Affairs Program met with King County Executive John Spellman and Chester Biesen, Executive Director of the Association of Washington Cities, Wednesday on local government modernization. He and Donald R. Farmer (Political Science) are attending the annual meeting of the Western Political Science Association in Sacramento this weekend. Culver will be a participant on the panel on "Comparative Local Politics" at the meeting.

\* \* \* \* \*

The President's Inaugural message, Thoughts on Joy, is available at the Information Desk. You may also pick up additional copies of the Inaugural Program.