

'Choir Of The West' In 1938 Debut



WE have with us today, Prof. Gunnar Malmin, director of music at Pacific Lutheran college, Parkland, and the new "Choir of the West", official singing group of the college. Prof. Malmin, who succeeded Joseph Edwards as head of the college music department last September, has developed a well balanced group of 36 singers to carry on the Pacific Lutheran traditions.

The first concert appearance this season will be at Our Savior's Lutheran church, So. 17th and J, next Sunday evening, Feb. 6, at 8 o'clock. This is preparatory to the annual tour of the choir.

The following program is announced for Sunday night:

| | |
|--|--------------|
| "Blessing, Glory, Wisdom and Thanks" | Bach |
| "Hesanna" | Christiansen |
| "I beheld Her" | Willan |
| "Jesus, Friend of Sinners" | Grieg |
| "Art: All Things" | Arr. Malmin |
| "O Filii et Filiae" | Leising |
| "Angels' Voices" | Edwards |
| "O Lamb of God" | Kalinnikof |
| "O Savior" | Christiansen |
| "Spirituals" | Malmin |
| "Crucifixion" | "How" |
| "How" | Christiansen |
| "How" | Lutkin |

The public is invited. There is no admission charge, but a silver offering will be taken.

Members of the choir appear in the picture in the following order, reading from left to right:

Front row, left to right: Jenny Baidon, Eva Gjesdal, Marguerite Hansen, Jeanne Preus, Prof. Malmin, Astrid Anderson, Marion Johnson, Corinne Malmin, Maria Hageness.

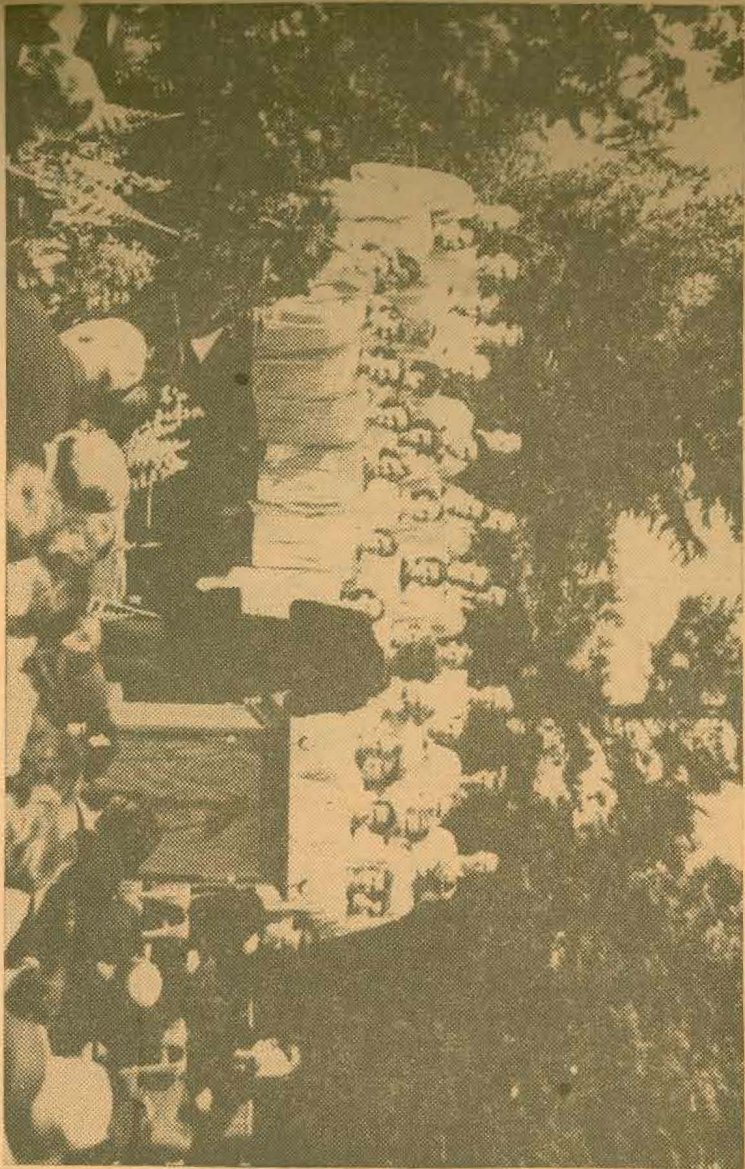
Second row: Alice Ramstad, Charlotte Gørlund, Zilla Miller, Gertrude Tingelstad, Caroline Hoff,

Beatrice Wade, Vera Taylor, Betty Peterson.

Third row: Dorothy Peterson, Elisabeth Reitz, Kenneth Johnson, Don Monson, Melvin McCutcheon, Gerhard Reitz, Goodwin Olson, Alfred Carlstad, Gerhard Carlstad, Elizabeth Stuen, Esther Norgaard.

Fourth row: Roger Pederson, Alvin Petersen, Alvin Lehmann, Lloyd Thompson, Rudy Elmer, Otis Grande, Robert Svare, Luther Boe, Thor Larson, Richard Wiesner, Orville Schlanbuech, Gerhardt Pfeuger.

PACIFIC LUTHERAN CEMETERY IS QUIET SETTING



In an amphitheater of evergreens, under a sunny May sky, Pacific Lutheran College's "Choir of the West" raised beautifully blended voices in song last Sunday afternoon as thousands of Lutherans from every part of the Northwest honored the memory of loved ones at impressive memorial exercises. Directing the choir was Prof. Gunnar J. Malmin. Seated immediately to the right of the pulpit is the Rev. C. S. Odell, of Immanuel Lutheran Church, Portland, who gave the memorial address.

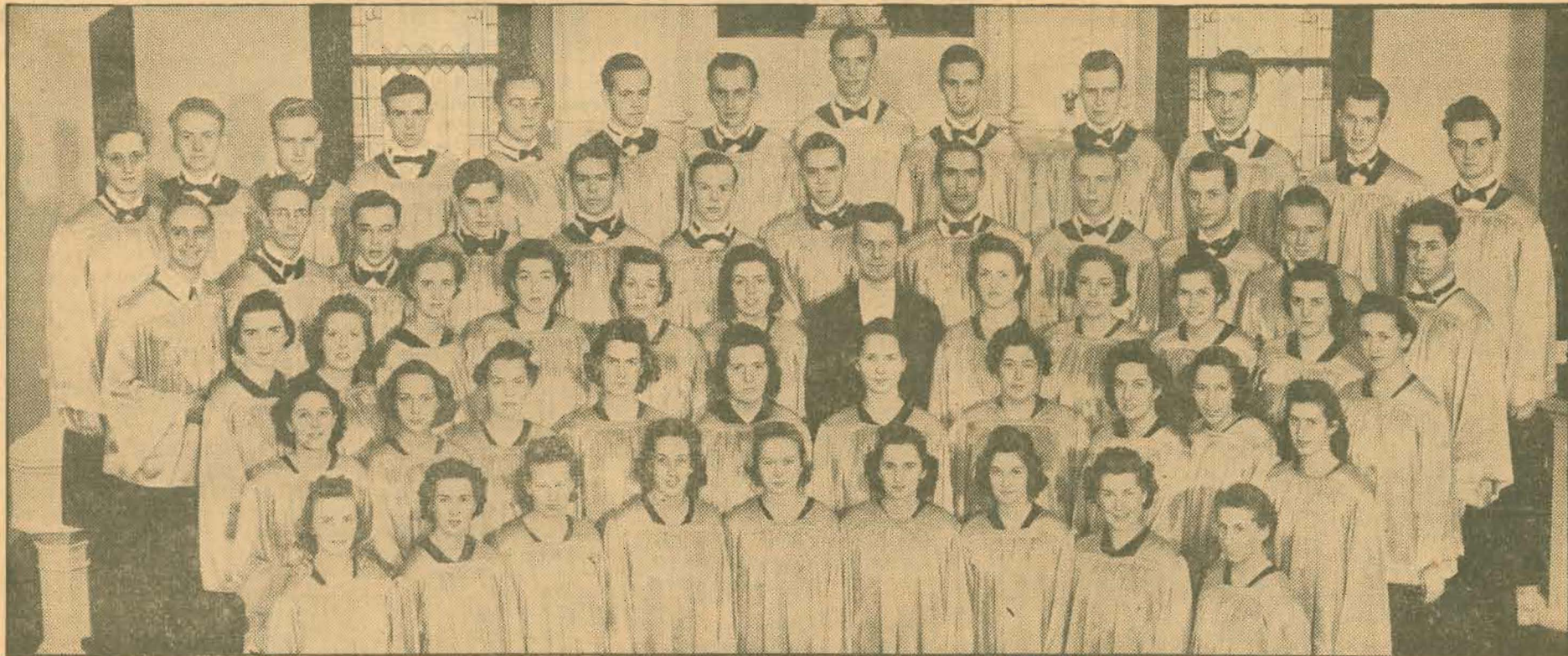
Plan Big Song Festival



A visitor in Tacoma, Thursday and part of Friday, was the Rev. Alvin A. Snesrud, right, pastor of Our Savior's Lutheran church, in Los Angeles, and assistant director of the International Lutheran Choral union. He is pictured with Prof. Gunnar Malmin, head of the music department at Pacific Lutheran college, as they talked over plans for the big Hollywood bowl concert to be given by the choral union in June.

College Choir Will Sing in Hollywood

P. L. C. "Choir Of The West," New 1939-40 Model



SOME are new, some you have seen before, in this photograph introducing the 1939-40 Choir of the West, official singing group of Pacific Lutheran college, Parkland. Members of the 55 voice group which will tour the Northwest this season appear in the photograph in the following order:

First row—Lorna Vosberg, Ruth Opstad, Avia Hoyland, Marjorie Glenn, Lenore Rasmussen, Carol

Haavik, Barbara Xavier, Mabel Scott and Lorena Poland.

Second row—Leola Lockwood, Florence Hopp, Priscilla Preus, Babette Brottem, Edith Christenson, Elsie Gunderson, Alice Ford, Virginia Schreuders, Ann Johnson and Florence Pflueger.

Third row—Marcella Frederick, Irene Schillios, Elisabeth Reitz, Sylvia Johnson, Lena Jensen, Nina Anderson, Prof. G. J. Malmin, conductor; Caroline Hoff, Virginia McFadden, Ruthene Haaland, Mar-

garet Grass and Margaret Heggem.

Fourth row—William Foss, Raymond Deetz, Raymond Pflueger, Neal Hoff, Gerhardt Svare, Phillip Norby, Edward Pedersen, Harold Falkenberg, Jos. Wherry, George Galbraith and Merle Pflueger.

Fifth row—Harmon Van Slyke, Forest Bryant, Russell Heglund, Wilfred Jewell, Edwin Valentine, Torger Lee, Arne Maki, Paul Smith, Gerhard Reitz, Lyle Jacobson, Goodwin Olson, George Galbraith and Merle Pflueger.

P. L. C. Choir Ends Season

Concert Demonstrates High Standards Have Been Maintained

By KATHARINE HUNT

That the 1939-40 Choir of the West has maintained and, in some phases of presentation even surpassed the high standards set by previous Pacific Lutheran college choruses was definitely established Monday evening when the 60 voice organization gave its concluding concert of the season at the First Lutheran church.

The a cappella chorus, directed by Gunnar Malmin, was in excellent trim and gave a program which, devoted entirely to sacred music, contained a wealth of interesting arrangements and a wide range of tonal effects. A fine blending of voices, careful attention to phrasing and timing and a refreshing enthusiasm of approach to each new number made for the achievement of an outstanding performance.

Opening Impressive

The opening number, Bach's "Jesu, Priceless Treasure," was one of the most impressive on the program and one of the most interesting for the manner in which the chorale was presented in different settings. Glinka's "Cherubic Hymn" was one of the finest songs of the evening, its measures richly rounded and Malmin's own arrangement of the Danish chorale, "Arise All Things That God Hath Made," with its introduction in octaves, was stirring in words as well as in music.

Men's voices, in which the bass section was especially notable, predominated at the opening of "Salvation Is Created," Tchesnokoff, and in contrast was the gentleness and in contrast was the gentleness of Fischer's "Marienlied" with its hummed portions.

Jacob Handl's "Alleluia" was a jubilant expression of worshipful praise. The always lovely "Beautiful Savior" was followed by the three movements of Christiansen's "Psalm 50," in which the bass and alto sections afforded some of the most beautiful passages, and Lutkin's "Nunc Dimittis," as always for Choir of the West programs, brought the concert to a close.

The only regrettable thing about Monday night's concert which ended a season in which the choir made successful tours of several Northwest states, was the smallness of the audience. The church should have been packed to hear the organization that has deservedly won an enviable reputation along the entire Pacific coast.

Choir of West Ends Season

With a program that expressed the religious atmosphere of a Lutheran service, the Choir of the West, singing group from Pacific Lutheran college, Parkland, closed the 1940 season with a concert at First Lutheran church Monday night.

Besides being the last formal concert appearance of the group this season, the presentation also was in the nature of a farewell gathering as a number of the singers have completed their college work and will not return to Parkland next year.

Seasoned by a recent Northwest concert tour, the chorus was led by Prof. Gunnar J. Malmin through a program of sacred numbers in which the spiritual significance predominated.

As expressed by Rev. Mikkel Lono, field secretary of the college, in a brief address during the intermission, the objective of the chorus is to emphasize in pleasing song the spirit of worship, a purpose which was accomplished particularly in such compositions as "Jesu, Priceless Treasure" (Bach); "Cherubic Hymn" (Glinka); "Salvation Is Created" (Tchesnokoff); "Marienlied" (Carl Aug. Fischer); F. Melius Christiansen's popular arrangement of the Crusader's hymn, "Beautiful Savior," and the concluding number, "Lord Now Lettest Thou Thy Servant Depart in Peace."

Altogether it was one of the best concerts in which Prof. Malmin's singers have been presented before a Tacoma audience.—E.T.S.

PLC Choir of West Ready for Tour

april 10, 1960



ENSEMBLE LEADERS—Four leaders concerned with details of the concert tour to be undertaken this week by the Choir of the West of Pacific Lutheran College are shown here. Left to right they are Gerald Erickson, choir president; Gloria Mitchell, soprano soloist; Olaf Malmin, student director; and Prof. Gunnar Malmin, director.

ON EMPTY STOMACHS

Pacific Lutheran Choir Sings for Its Supper

By KEITH ALLAN

Approximately 600 Santa Rosa music lovers were given a demonstration of how excellently sacred music can be performed by a well-trained choral group Sunday night at the Santa Rosa High School auditorium.

The Pacific Lutheran College choir of 60 voices, under the

direction of Gunnar J. Malmin, had difficulties on the road but none in the auditorium. The college chorists sang a program yesterday morning in Medford, Ore., and left immediately for Santa Rosa, only to have one of their buses break down at Redding.

As a result they arrived in time for the program but had to go onstage without dinner.

Opening with the Bach motet for double chorus, the group demonstrated a fine facility and pleasing interpretation of this complicated contrapuntal work.

For its 2nd number the choir leaped about 2 centuries in musical style to the free interpretation of Elgar's setting of the sacred text "Go, Song of Mine."

"He Wants Not Friends" by Shaw brought out the use of solo voices against a choral background and, judging from the quality of the individual voices it was easy to see what gave the choir its rich voice.

ONE OF THE most difficult but best done of the selections on the program was Brahms' "O Savior, Throw the Heavens Wide." The song opened with a sort of choral double canon, shifting into a full fugal treatment of the theme material.

In the next to last stanza opening with "here we suffer a heavy doom" the harmonic structure took on a modal quality and the selection wound up with a complicated Amen figure.

RACHMANINOFF'S "Glor y Be to God" had the quality of plainchant which was excellently handled by Director Malmin and his group, being ritual but not monotonous in its limited pitch range.

In Fischer's "Marienlied" sung in German, the audience was given an added surprise with the solo singing of Soprano Eleanor Hansen standing out rich and clear against the choral fabric.

In the number which followed, "Of Thy Mystical Supper" by Lvoff, Mr. Malmin made full use of the excellent pianissimo and rich tonal shading of his group.

Another excellent job of solo singing was that of Richard Svare in the Norwegian hymn, "In Heaven Above" as arranged by F. M. Christiansen.

One other number of this fine choir, who should be singled out for particular praise is Shirley Anderson of the first alto section. Not once did she miss an entrance in all the complicated music which was sung, nor did she miss any of the fine shadings employed by her director

or any of the rapid dynamic changes.

None of the other members of the choir made mistakes either, but Miss Anderson accomplished this without once looking at her director. Some members of the audience might have noticed this, but I wonder how many know why.

I GOT the clue when the choir shifted position after one of the numbers and noticed Miss Anderson rested her hand on the arm of the girl next to her. That's right—she is blind. Her performance was a feat of musicianship.

Mr. Malmin's talents were doubly demonstrated. Not only is he tops as a director, his composition, "Arise All Things," based on a Danish folk song, was a fine choral selection.

The group also presented 2 selections from Randall Thompson's "The Peaceable Kingdom" which left one with a desire for more. The choir closed with the fitting selection, "Lutkin's "Nunc Dimmittis" ("Lord, now lettest Thou thy servant depart in peace.")

'Choir of The West' Presents Stirring Performance Here

An appreciative audience at the high school auditorium Saturday night heard an outstanding concert presented by the "Choir of the West," a 56-voice choral group from Pacific Lutheran College, Parkland, Washington.

Under the direction of Gunnar J. Malmin, the twenty-third annual concert tour of the choir, enroute east, was well received by the Williston audience.

Director Malmin presented a versatile program which opened with the selection "Blessing, Glory, Wisdom and Thanks," by Bach, a motet for double chorus, and featured in several numbers Charles Martin, tenor, of Parkland, Washington.

Mr. Martin's solo work in "Who Is Like Thee," and "Saviour of Sinners," by Mendelssohn, was enthusiastically received.

Malmin's ability to interpret the selections with exacting precision from the youthful chorus members, was lauded by Williston music followers.

Two compositions, "Keep Silence Before Him," and "A Sigh," by Malmin were presented.

Harold's ads for best results!

Choir Is Splendid

Pacific Lutheran Group Greatly En- joyed in Concert

By KATHARINE S. HUNT

That the Pacific Lutheran college Choir of the West will be a truly fine representative of this state when it goes on tour to California in June under the official banner of the Washington Golden Jubilee association was proved beyond doubt Friday evening when the famous a cappella aggregation gave its only Tacoma concert of the season at Central Lutheran church.

Under direction of Gunnar Malmin, the surpliced choir of 46 carefully trained singers was heard in three groups of songs, all sacred music, but chosen with keen discernment to point the effectiveness of such a program. Shadings of tone and volume were finely drawn and full-voice climaxes were admirably accomplished. The choir is well balanced and has sufficient bass to provide satisfying support.

The Program

The choir opened with Bach's impressive motet for double chorus, "Blessing, Glory, Wisdom and Thanks," which was followed by the richly melodic chords of Christiansen's "O Sacred Head Now Wounded." Willan's "Hodie—Today Christ Is Born" voiced exultant rejoicing.

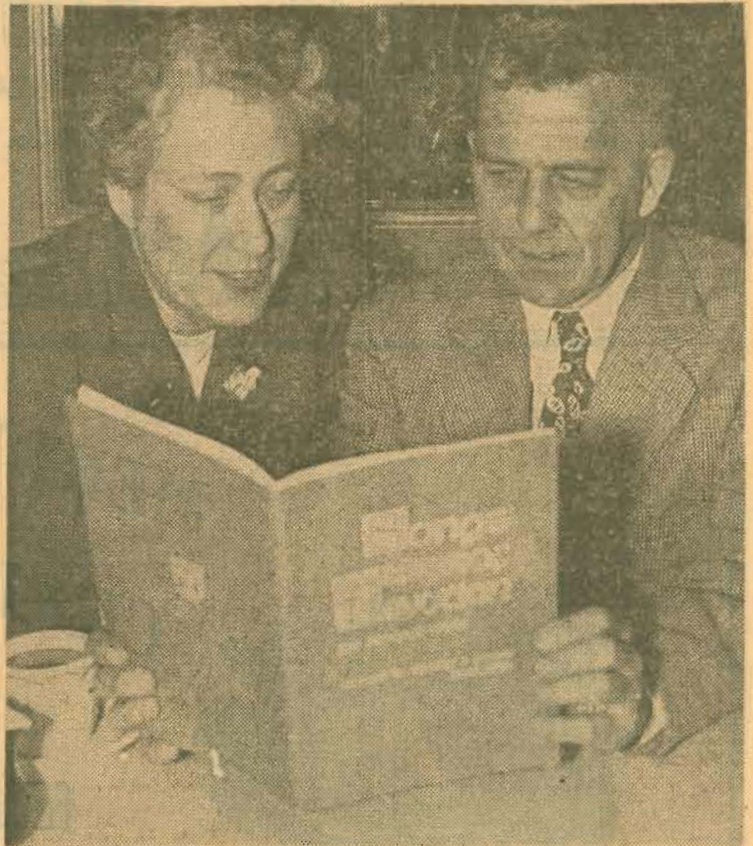
One of the most appealing songs presented was of interest because of its local production. "A Sigh," beautiful in melody and text, was composed by Director Malmin as a setting for an old Danish hymn which was translated into English by N. J. Hong, formerly of the Pacific Lutheran college staff. "Beautiful Savior" by Christensen, was noteworthy for the incidental solo which introduced Astrid Anderson, contralto, and there was lovely simplicity of melody in the concluding song, Lutkin's "Lord, Now Lettest Thou Thy Servant Depart in Peace."

Young Violinist

As assisting artist the choir presented Alice Stockton, 13-year-old violinist, who has been enthusiastically received by several Tacoma and Southwest Washington audiences recently. With Helen Congdon at the piano, the young musician was cordially applauded for her presentation of Sarasate's "Gypsy Airs," Mendelssohn's "On Wings of Song" and "Ave Maria" by Schubert.

An interested and interesting member of the audience last evening was Miss Bette Lee of Sumner, who attended the concert in her role of queen of next week's daffodil festival. She was accompanied by her two royal attendants, Miss Lucille Anderson and Miss Doris Anderson.

Tacoma Musicians Write Third Song Book



—Photo by P. L. C. Campus studio

MR. AND MRS. GUNNAR B. MALMIN P. L. C. Teachers Inspect Newest Work

Prof. and Mrs. Gunnar J. Malmin, members of the Pacific Lutheran college music faculty, have published their third collection of songs for junior choir singing. The book came off the presses of the Augsburg Publishing house of Minneapolis last week.

Entitled "Songs of Devotion," the new publication is written for two-part singing. It was compiled by special request of the Minneapolis publishing organization which is owned by the Evangelical Lutheran church.

The Malmins already have written two junior choir song books for treble voices, both published by Augsburg. Still in print, more than 50,000 of these books have been sold.

In the dedication, the Malmins have included the junior chor of Messiah Lutheran church, Tacoma, which they have directed the past five years. One song in the book, "Savior, Precious Savior," bears the caption, "To the Junior Choir, Messiah Lutheran Church, Tacoma, Wash."

Six of the songs in the collection of 22 in the book are compositions by Malmin himself. These include "Oh, Would My God," "The Narrow Way," "Mother's Day Prayer," "Praise to the Christ Child," "We Would See Jesus" and "Savior, Precious Savior."

Songs For Many Occasions

The 22 songs in the book include selections for Advent, Christmas, Lent, Easter, Pent cost and Mother's day. There are selections of a general nature for use on other special occasions in the church year.

Malmin has a B. A. from Luther

college, and his B. M. from St. Olaf college. He has done graduate work at Northwestern and the University of Michigan. For the past 14 years he has been on the music faculty at P. L. C., where he is director of the well known Choir of the West.

From 1928 to 1930 Malmin taught music at Drake university in Des Moines, Iowa. A talented musician, Dorothy Brann, was in some of his classes and was accompanist for his glee club. She became Mrs. Malmin.

Mrs. Malmin has a B. S. in music from Drake. She teaches organ at the college, is a charter member of the Tacoma chapter of the American Guild of Organists and is sponsor of the P. L. C. chapter of the A. G. O. She has done graduate work in organ at the University of Washington.

From 1930 to 1937 the Malmins were on the faculty of Dana college in Blair, Neb.

Lenten Music Presented By Noted Choir

"Choir Of The West"
Pleases Lovers Of
Sacred Music

Sixty happy college students pleased lovers of sacred music last night when they sang in the high school auditorium.

The "Choir of the West" presented a program ranging from Bach and the 17th century to a modern composition by its director, Gunnar J. Malmin.

Receiving most enthusiasm from from the audience were the two most familiar numbers — "Den Store, Hvide Flok" arranged by Grieg and "Beautiful Savior" arranged by F. Melius Christiansen.

Charles Martin, tenor soloist, showed unusual ability in several numbers, particularly in "Savior of Sinners" by Mendelssohn where his solo part and the chorus blended to perfection.

Eugene Ahrendt, the young violinist with a crewcut, varied the program with several selections. "Fantasy" and "Perpetual Motion" by Paganini showed well his technical ability. His numbers also included a modern selection from Copeland's "Rodeo."

The program opened with "Blessing, Glory, Wisdom and Thanks," a motet for double chorus by Bach and included several Lenten selections, such as "Of Thy Mystical Supper" by Lvoff and "Go to Dark Gethsemane" by Noble.

G. J. Malmin To Head Pacific Choir Here

The "Choir of the West" will appear in the Williston high school auditorium Saturday starting at 8:15 p.m. under the direction of Prof. Gunnar J. Malmin.

The choir is from Pacific Lutheran college and is being sponsored locally by the First Lutheran Choir.

Malmin, head of the college music department, has composed several numbers for church choirs and two of his selections are included in this year's tour programs. He also di-



rects a chorus at the Pacific college known as the "second choir."

Those in charge of local arrangements include George Everson, Dorothy Kaluza, Mrs. Harold Fosholt, Mrs. Elvin Larson, Sig Lervick and John Hoerauf, president of the First Lutheran choir, chairman.

Luther Steen, son of E. B. Steen, former pastor here, is a member of the choir.

Friday, March 31, 1950

Emphasize 'Effect'

Jennings Reviews 'Choir of the West'

By Ken Jennings

Last Saturday night the "Choir of the West" sang to a typically enthusiastic St. Olaf audience. The reaction was well-grounded for this disciplined choir sang convincingly and with beauty under Professor Gunnar Malmin, a former Ole.

No musical program can go far wrong by starting with Bach, and the PLC choir began their concert with Bach's joyously optimistic "Blessing, Glory, Wisdom and Thanks," a motet for double choir. What followed was an assortment of anthems of which the most interesting seemed to be "Who Is Like Thee," an arrangement of a Hebrew chant; "The Righteous," for the most part a good example of early homophonic writing by the son of J. S. Bach; "Of Thy Mystical Supper" by Lvoff; "Alleluia" by Randall Thompson, head of the music department at Harvard; and "Hodie-Christus Natus Est" by Heally Willan. The highlight of the program was none other than F. M. Christiansen's "Wake, Awake," a good, hearty number anytime, anywhere. Malmin's own effective and colorful compositions included "Keep Silence Before Him," "A Sigh" and "Praise to the Christ Child."

The choir as a whole had a lyric quality and could produce effective pianissimos. The words were clear and understandable. One could have wished for a more dynamic tone thus giving room

for more variety in expression.

The question of how far a choir can go in regard to effects comes up because of the frequent use of *storzando* and the antiphonal effect of half the choir in the front end of the auditorium used in one number. The answer lies in another question. Does the effect enhance the spiritual and musical content of the composition, or does the effect call attention to itself as being an effect? If it calls attention to itself, to borrow a phrase, it is self-contradictory. In music it is the duty of the musician to seek out the music, if any, in a composition, not to superimpose his own ideas on it.

A choir has a reason to exist not only for what it can bring to the people who hear it, but also for what it can bring to the people in it. The members of the PLC Choir had the enthusiasm and vitality for the concentration and consecration to the ideal and message of their song that comes when each one has caught the spirit and the intent of a real choir.

CHOIR OF THE WEST CONCERT AT ST. OLAF

By Oscar R. Overby

Choral music interests in the field were pleasantly fuelled Saturday when the touring choir of Pacific Lutheran college, Portland, Wash., stopped for an evening performance at the St. Olaf auditorium. This organization of college students has for a number of years been gaining prestige under the expert tutelage

of Gunnar Malmin, professor of music at the college and a brother of Dr. Marie Malmin Meyer of the St. Olaf faculty.

The ideals of a-cappella singing, which have become nationwide, were made evident in the choice of program and the method of procedure. Mr. Malmin fused technique and spirit to make the concert memorable.

In fitting memorial to the great Bach, the program opened with his well-known motet, "Blessing, Glory, Wisdom, and Thanks." Other numbers in the first group included, "Keep Silence Before Him," a worthy composition from the director's pen, the Hebrew chant, "Who Is Like Thee," with Charles Martin in a tenor solo role, Lvoff's "Of Thy Mystical Supper," and Randall Thompson's "Alleluia."

To intersperse the choral groups, the choir was ably assisted by the technically fluent student violinist, Eugene Ahrendt. He made two appearances in difficult selections from Bach, Paganini, and Copland.

The closing groups of the choral program, 15 songs in all, featured works by Leisring, Johann Christoph Bach, Noble, Malmin, Mendelssohn, Grieg, Willan, Christiansen, and Lutkin—a diet of fine balance and variation. A striking number was Mendelssohn's "Savior of Sinners," with the prominent solo part carried by the tenor, Charles Martin, a voice of mature strength and potential fiber which with more adjusting and polishing should prove exceptionally effective.

The singing of this choir has many points which make listening a real pleasure. The spirit, attacks, and nuances were impressive, although balance and blending of voices were not up to the general level of the group, due mainly to vocal methods and impurities of tone in the soprano section. The performance as a whole, places the choir in the ranks with the prominent concert troupes of our day.

The response from the friendly audience brought two excellent encores, each revealing a beautifully appropriate solo voice. The special numbers were "Praise to the Christ Child," by Malmin, and the popular, "I Wonder as I Wander."

The visit of "The Choir of the West" to the local campus fulfilled several anticipations and provided occasion for returning some of the hospitality which the Pacific Lutheran collegians have accorded the St. Olaf choristers on their several song journeys to the West coast.





P. L. C. Musicians Busy—These pictures, taken at Pacific Lutheran college, show a few of the groups and individuals in the Parkland school's busy and crowded department of music which eagerly awaits completion of the new conservatory of music. At the top is the newly organized Lettermen's chorus conducted by Gunnar Malmin, director of choral music. In the inset is Karl Weiss, director of instrumental music and piano instructor. Next is the uniformed band and then comes the orchestra directed by Harley Christopherson who also conducts the band. In the second from bottom row, at left, student Allen Laurson stands beside Mrs. Donald Dilts, voice teacher, and at right, Mrs. Gunnar Malmin, instructor in organ, gives pointers to Ray Tobiason. In the bottom row, at left, Frederick Newham, voice instructor, seems to have changed roles with Marilyn Hanich, piano student. In the center, student Kathryn Reule stands beside Mrs. Gudrun Ness Ronning, voice teacher, and at the right is R. Byard Fritts, piano instructor.—Photos by Richards.

Plays Fiddle Well But Ball Game More Fun



Isn't It Time Yet?

—Young Gary Malmin of Parkland is an accomplished violinist, but he'd just as soon be out playing basketball or baseball. Even when practicing, he never lets whatever sport is in season far out of mind—or sight. He is the son of Prof. and Mrs. Gunnar Malmin of Pacific Lutheran college. (News Tribune photo.)

By LEE IRWIN

Nine-year-old Gary Malmin of Parkland already plays a mean fiddle—but he'd much rather be out shooting baskets or fielding grounders.

Gary, son of Prof. and Mrs. Gunnar J. Malmin of Pacific Lutheran college, is a talented young violinist. He already has gone on tours as a featured soloist with the P. L. C. chorus.

But as far as young Mr. Malmin is concerned, playing basketball or baseball or football is twice as much fun. Any day now, he's liable to do his practicing with a baseball bat.

Gary has been playing the violin for about a year and a half although as much as three years ago he had composed a small piece for piano. He comes by his music naturally. His father is director of music at Pacific Lutheran while Mrs. Malmin teaches organ at the Parkland college.

Prof. Malmin also directs Pacific Lutheran's nationally known Choir of the West and Gary's introduction to concert music actually came with the choir.

Stars With Choir

Last January the regular choir violinist couldn't make a trip to Kent. Young Gary went along in his stead. He was such a hit that his father decided to take him along on a brief tour by the P. L. C. chorus to southwest Washington and northwest Oregon during late March.

Gary did himself proud again and now is likely to go on quite a few Pacific Lutheran junkets.

On his first night away from Tacoma, his father and their host suggested young Gary call his mother in Parkland just to say hello.

He didn't think too much of the idea, then changed his mind: "Gee, then I can ask her how Curly Kayoe is coming out."

And he did, too.

According to his mother, Gary is good about practicing on rainy days, "not so good" when the sun is out. Another deterring factor—a basketball hoop on a neighbor's garage right next door.

Usually, however, Gary—actually his name is Olaf Gerhardt Malmin—does his practicing after supper. He must practice daily, in order to keep up with the program outlined by his teacher, Charles Gestantas.

Gary talks sports well, best of all Pacific Lutheran basketball. He can recite Harry McLaughlin's record like a talking machine. His mother says Gary "practically memorizes" the sports pages nightly.

Gary was born in Tacoma and is in the fourth grade at Parkland

school. A brother, John, 6, is taking violin lessons also, while a sister, Anna Marie, 5, is just starting with piano. Another brother, David, 11, just has a paper route.

Prof. and Mrs. Malmin actually met through music. They first were introduced through the men's chorus at Drake university in Des Moines, Ia. Prof. Malmin directed the group and Mrs. Malmin was accompanist. They have been at P. L. C. for 12 years.

Gary doesn't have any particular choice as a favorite sport—just "whatever one is in season." Mary just think: Some day Mary Harshman may have the best violin-playing basketball center in the country.