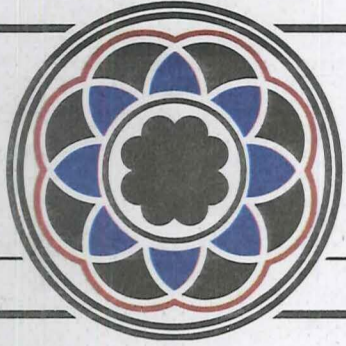




**SPORTS**  
Volleyball ranked 13th after  
two conference wins  
PAGE 12



**A&E**  
From Emmy's to 'Emily'  
PAGE 5



# THE MOORING MAST

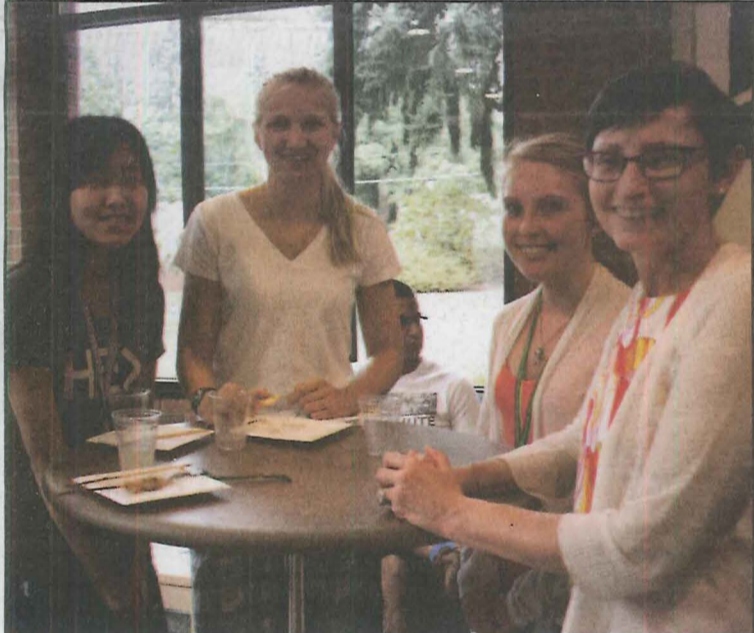
PACIFIC LUTHERAN UNIVERSITY

SEPT. 26, 2014

<http://mastmedia.plu.edu>

VOLUME 91 ISSUE

## Stuen reopens, revived and ready for residents



PHOTOS BY KATIE DEPRECKER  
TOP PHOTO, Left to Right: Vice President of Student Life and Dean of Students Joanna Royce-Davis, Resident Director Mercy Daramola, Resident Assistant with Additional Duties Tyler Dobies, President Thomas Krise, Resident Hall Council President Mollie Parce and Dean of Campus Life and Executive Director of Residential Life Tom Huelsbeck participate in cutting of the ribbon to freshly renovated Stuen Hall.  
LEFT PHOTO, Left to Right: First-years Hilary Vo, Katherine Nakasone, Emily Odegard and Miranda Wesen with Patricia Krise, who attended with husband and President Thomas Krise.  
RIGHT PHOTO: First-year, Marissa Modestowicz, center, celebrates the grand reopening of Stuen Hall with other residents.

By **RELAND TUOMI**  
Editor in Chief

Stuen Hall has been under construction since summer 2013 and was scheduled to be reopened the following fall. After much construction and scheduling set-backs, residents moved in Sept. 13.

Stuen residents had moved in on Sept. 4 with the rest of campus, but into Tinglestad. The whole hall fit on the eighth and ninth floors.

"The [Stuen] community really bonded in T-stad," said Tyler Dobies, Resident Assistant with Additional Duties. "We are really grateful to T-stad for sharing their space with us."

Stuen residents—often referred to as "Stuen-ites"—moved in Sept. 13 in the morning.

"RHC did a great job decorating both Tinglestad and Stuen," Resident Director Mercy Daramola said. "They really made it feel like home."

A ribbon cutting ceremony to officially open the building took place on Sept. 16. Executive Director of Residential Life Tom Huelsbeck was the master of ceremonies, where President Krise, Vice President of Student Life Joanna Royce-Davis, Resident Hall Council president Mollie Parce, Daramola, Dobies and Huelsbeck cut the ribbon.

Stuen comes with some upgrades in this remodel, such as LED lights in resident rooms, heated floors in the restrooms, steel plates to reinforce the walls and card access for residents' rooms.

"I love the card access because I kept losing my keys, so it's one less thing to carry," Dobies said. "It's really cool, too."

To learn more about Stuen's updates, visit:  
<http://www.plu.edu/residential-life/misc/residence-halls/stuen-hall.php>

### WHAT'S INSIDE

**Arts & Entertainment**

*Longing for Lute Lyricist: Alma mater song needs lyrics*

page 4

**Sports**

*Downing leads Men's Soccer to two victories (pictured).*

page 11

**Opinion**

*Student stresses importance of voting in congressional elections*

page 8

**Lute Life**

*Student Media Board and you*

page 6



PHOTO COURTESY OF <http://golutes.com> BY Jacqui Gutierrez  
LEFT: Mike Arguello RIGHT: Jordan Downing

# New food choices on campus

## Something for every picky eater

By DENAE MCGAHA  
Guest Writer

If you are what you eat, students are in for a transformation.

This year, students will notice changes in dining options such as extended Commons hours, a smoothie bar at Tahoma Bakery and Café and nearby off-campus dining alternatives.

Central to campus, the Commons dining service is open for dinner until 8:30 p.m., an hour later than last year. Junior Abbie Johnson, a longtime Dining And Culinary Services employee, finds merit in the change. She recognizes it allows more flexibility for students with busy schedules.

Johnson says the extended mealtime caters to a more solitary atmosphere, as many students who use the extra hour come in by themselves.

Johnson's Commons coworker, junior Amber Stokes, observes that fewer students come during that final hour, making it a quieter time to get dinner.

Anything but mellow during a rush, the Tahoma Bakery and Café now offers a smoothie bar. Already popular among students, the smoothie bar offers a wide range of flavors and supplements. Stokes views the smoothie bar as convenient and its options as plentiful and healthy.

From a fruity treat to a meal replacement protein shake, students can personalize their smoothies to cater to their nutrition, their sweet tooth or both. Track athlete Dominique Jackson, a junior, finds sustaining options in many of the smoothies, especially thanks to the variety of natural supplements. Even as the evening hours at Tahoma have been cut to make way for the extended time in the Commons, the new

smoothie bar has opened up Tahoma to a whole new world of possibilities.

More possibilities for off-campus dining are now available. The newly opened Pan-Asian Cuisine restaurant and Warthog Barbeque Pit are both within a five minute walk from campus, located on Pacific Avenue.

First-year Emma Bauman has already deemed the food at the Pit as delicious. Describing it as likable and affordable, sophomore Emma Southard says the Warthog Barbeque Pit offers students country-style cuisine. A tip from Southard, get your timing right and you could have your choice of one of the Pit's daily homemade pies, fresh from the oven.

As this new school year starts, the new culinary options on and around campus are sure to offer students new dining experiences.

## World News Trending:

### Miss America

Miss America, Kira Kazantsev, was kicked out of her Long Island sorority after a hazing scandal she admitted to on "Good Morning America" Tuesday morning.

### Alaska Reporter

Social Media went off the charts this week when a reporter from Alaska, Charlo Greene, quit her job on air, promoted legalizing marijuana and said the F-word.

### Scotland

On Sept. 18, Scotland voted on whether or not to separate from the United Kingdom and become independent; 55 percent of the votes came out in favor of staying part of the United Kingdom.

### Ebola Fever

In worst-case scenario, Ebola cases could reach 1.4 million in 4 months, CDC says.

### Orange is the New Black

Show writer divorces husband and begins dating actress Samira Wiley, who plays Poussey on the show.

### Urban Outfitters

Company apologizes for selling faux blood-spattered Kent State University sweatshirt.

### Emma Watson

UN goodwill ambassador, Watson promotes #HeForShe gender equality campaign

### President Obama

President Obama announces plan to attack Syria Sept. 23 on CNN.

# PLUTO pushing traditional boundaries

By KAITLYN HALL  
Copy Editor

Blended learning, a model that combines traditional, face-to-face instruction and online learning, is being incorporated

into PLU classes for the first time this semester.

Frank Moore, Associate Provost of Information and Technology Services, hopes that the Pacific Lutheran University Teaching Online (PLUTO) program will increase student retention rates and summer

revenue, allowing PLU to reduce budget cuts and invest money back into its students.

This fall's blended classes are a precursor to fully online classes, set to be offered in summer 2015. Moore recognized that students who don't live near campus or work during the summer may not have the ability to take in-classroom classes, making online courses crucial to revitalize what Moore called a withering summer semester.

"We're hoping next summer will be the first summer we have classes fully online," Moore said. "The interesting thing about classes online is if we don't do that for our students, somebody else is going to do that for our students, and that kind of defeats the purpose [of keeping classes on-campus only]."

PLU received a grant from the Benson Family Foundation to host the PLUTO Institute in June, which trained a discipline-diverse group of 10 faculty in teaching blended and online classes over four days.

Each of the 10 faculty who participated in the course is teaching a blended course he or she developed at the PLUTO institute. At the end of fall semester, students and faculty involved in the blended courses will be surveyed about their experience.

Moore said another PLUTO Institute is planned for January to prepare additional faculty to teach online courses in summer 2015.

Online classes will be completed through Sakai and will not come at an additional cost to the university, Moore said, because the infrastructure needed for online learning is already in place.

Moore emphasized that blended and online learning will not compromise relationship-building between students and faculty.

"I know that PLU prides itself on really important faculty-student interaction," Moore said, "but you can still be high-tech with high-touch."

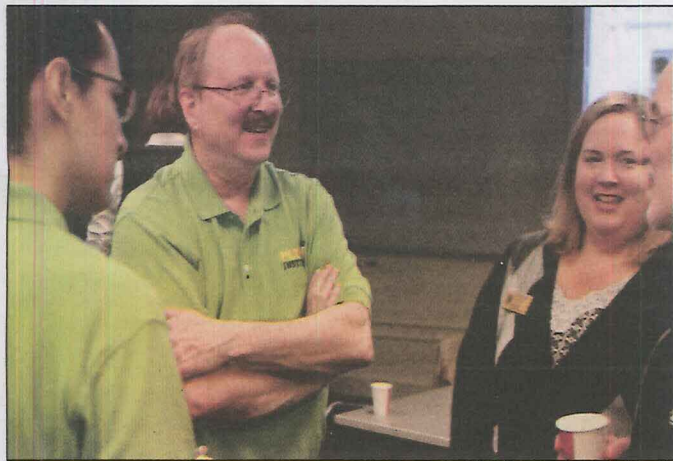


Photo Courtesy of Katherine Martell  
Frank Moore, Associate Provost for Information and Technology Services, at PLUTO programming seminar

# New Dean of Students joins PLU family

By MICHAEL DIAMBRI  
A&E Writer

Joanna Royce-Davis joined the Pacific Lutheran University community as the new Vice President for Student Life and Dean of Students this year. Royce-Davis brings a new motto to the offices of student life: the student-teacher investment is reciprocal, everyone has something to learn.

Royce-Davis was born in Boston, Mass. and predominantly grew up in New England. She said that the West Coast is the home of her heart and has a particular fondness for the Pacific Northwest. In her spare time, Royce-Davis loves to go outdoors, making PLU's closeness to numerous outdoor activities a perfect fit.

"I love adventure. I'm one of those people who will (try) most anything once: zip-lining, skydiving, camping and so on," Royce-Davis said.

After receiving her undergraduate degree from Indiana University, she earned her master's degree from San Jose State University and her doctorate from Syracuse University in rehabilitation psychology.

Royce-Davis was Dean of Students at Pacific University for 15 years, but was drawn to PLU by its mission.

"During the search process I felt a great connection to the students and faculty I met," Royce-Davis said. "This is a place that, in every way I have experienced so far, is fully invested in their students' learning, their experience and their outcomes."

Royce-Davis' daughter is a first-year student at PLU. She said it's great to see her daughter's experiences and it's an insightful look into the lives of students.

Royce-Davis said one of her goals is to make sure administrators are fully partnered with students and faculty to reinforce the support and experience of student learning. PLU students don't just learn in the classroom, Royce-Davis said.

It's important for PLU to stay rooted in its strong foundation, Royce-Davis said. She also pointed out that she wants to make sure those foundations are effective and bring good experiences for PLU's students.

Though Royce-Davis has received awards and recognitions throughout her career, she said her greatest professional accomplishments are when students come back to her and want to have a friendship.

"Having a community of care around is one of the best things I, or anyone, could ask for," Royce-Davis said.



Royce-Davis is a firm believer in the PLU mission statement and said diversity is crucial for developing critical thinking and understanding the richness of the human experience.

Royce-Davis strongly encourages all Lutes to engage with the people and organizations they find themselves in contact with throughout their PLU experience.

"Ask questions, get advice and support each other," Royce-Davis said.

## PLU News Trending:

### Meant To Live

MTL began in 2004 as a student-led conference supported by the Wild Hope Project. This conference's objective is to give students a place to connect with others besides their usual peers. Meant to Live is associated with Homecoming and will give students, alumni and "others" the chance for more informal conversation. Meant to Live lecture will take place Oct. 3 from 6:30-7:30 p.m. in the Scan Center.

### Homecoming

PLU's Homecoming, Oct. 3-5, will include something for everyone. 1964, 1974, 1989 and 2004 are the featured reunion classes.

### My Language My Choice

PLU Students will be featured in billboard ads around the South Sound, promoting awareness of offensive language.

# New Campus Safety shuttle policy promotes promptness

By SAMANTHA LUND  
News Editor

As the 2014-2015 school year kicks off, Pacific Lutheran University Campus Safety is headlining new policies and enforcing old policies in new ways. CSAF works to promote a safe environment and acts as PLU's enforcement agency for campus problems. CSAF is instating a new shuttle service policy, hiring off-duty police officers and hoping to make '14-'15 go smoother than previous years.

This year, the CSAF shuttle service is changing its hours and radius around campus. The shuttle service picks up students on or off campus in a PLU vehicle and transports them to another location. It runs 4 p.m. to 3 a.m. daily.

A CSAF officer will walk with a student to a location to ensure a safe arrival as part of the CSAF escort service, which runs 24/7.

With the new hours, CSAF also enforces a new shuttle pick up and drop off perimeter. The shuttle service can pick up and drop off at locations from to 116th St. to Tule Lake Road and from Pacific Ave. to Washington High School.

The shuttle perimeter was only shortened on the north and west sides of campus because the extended radius was not a good use of school time and equipment, said Greg Premo, Director of Campus Safety.

It seemed that the calls could be narrowed down to three or four houses in the extended perimeter using the shuttle service to and from class, Premo said. The new radius was worked out over the last year by CSAF, Resident Hall Association and ASPLU after holding open forums for students to be involved in the decision. "The new shuttle radius is the original radius that Campus Safety had before 2005," Premo said. "For some reason, it was changed in 2005, and it isn't the best use of our time."

According to Premo, the time it takes a shuttle to get to and from the far houses takes time away from responses to closer issues and can cause a backup.

This year, PLU is also hiring off-duty police officers to patrol campus and around campus in the afternoons and nights. Over the last year, CSAF has received a high number of complaints from the residents surrounding PLU about off-campus parties being loud and unsafe.

In response, CSAF hired a group of about 20 police officers to watch over campus for parties, illegal activity and speeding. The police officers are not working for PLU, so if an officer shuts down a party, it's to that officers discernment whether or not the house should be fined and whether or not to arrest students. Most parties usually are given a ticket at most, Premo said.

Off-campus parties are a major problem PLU faces. Premo said students disturb the community and leave parties drunk or high, disrupting the campus environment. PLU is a

dry campus, which means any students found drunk or high will be sent through Student Conduct. Tickets have already been given out to loud, off-campus parties during the first weekend of school.

CSAF will not call your parents, discipline you or find you guilty of any crimes. CSAF is the enforcement and safety group on campus; therefore, they will write down and report on issues and then send the reports through the necessary channels.

"Campus Safety addresses the small issues," Premo said. "We'll come and try to fix the situation, we'll call the Sheriff's Department or the fire department if it is necessary, but we are the first responders."

Currently, CSAF is seeing high numbers of bike thefts and unattended item thefts. Bikes, purses and backpacks are all crimes of opportunity, Premo said. Students should remember to not leave personal items

**If you need Campus Safety's assistance, call 253-535-7441**

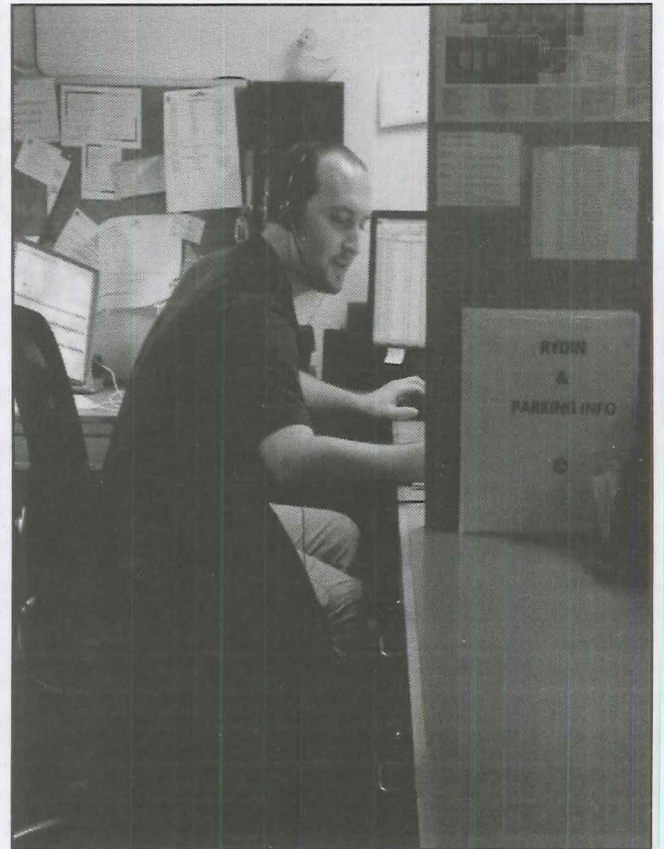


PHOTO BY SAMANTHA LUND

Adam Shreiber, Campus Safety Operations Supervisor, working at front the desk in CSAF headquarters, lower level Harstad.

unattended, always lock up their bikes and report any suspicious activity.

Weekly CSAF briefs can be found in *The Mooring Mast*.

## CSI: Campus Safety Investigations

Taken from weekly Campus Safety reports

### Theft at Tinglestad

Campus Safety (CSAF) was called due to theft report outside of Tinglestad on Sept. 8. After reviewing claims and footage, no suspects have been determined.

### Theft in Library

A student called CSAF to report a stolen purse from her backpack, which was left unattended in the Library on Sept. 8. After reviewing security footage, no suspects have been determined.

### Theft in South Hall

CSAF was called for a reported bike theft. The bike was left locked outside of South Hall on Sept. 9.

### Theft in Pflueger

Student reported to CSAF a stolen bike on Sept. 16. The bike was locked overnight to a rack outside. The lock was left behind. CSAF will review footage to find possible suspects, no additional actions have been taken at this time.

### Concern for People in Ingram

CSAF was called to Ingram Ceramics studio by a student on Sept. 19, reporting another student had been electricuted by a power outlet. The student did not need medical attention, but the outlet has been placed out of order.

### Alcohol Policy Violation

CSAF officers observed students in Tinglestad gated lot loading backpacks with beer on Sept. 19. Students were tracked to Pflueger hall. CSAF notified the Resident Assistants and the students were addressed in their rooms. The students cooperated and turned over their alcohol. An incident report has been forwarded to Student Rights and Responsibilities.

### Vehicle Theft in Harstad Lot

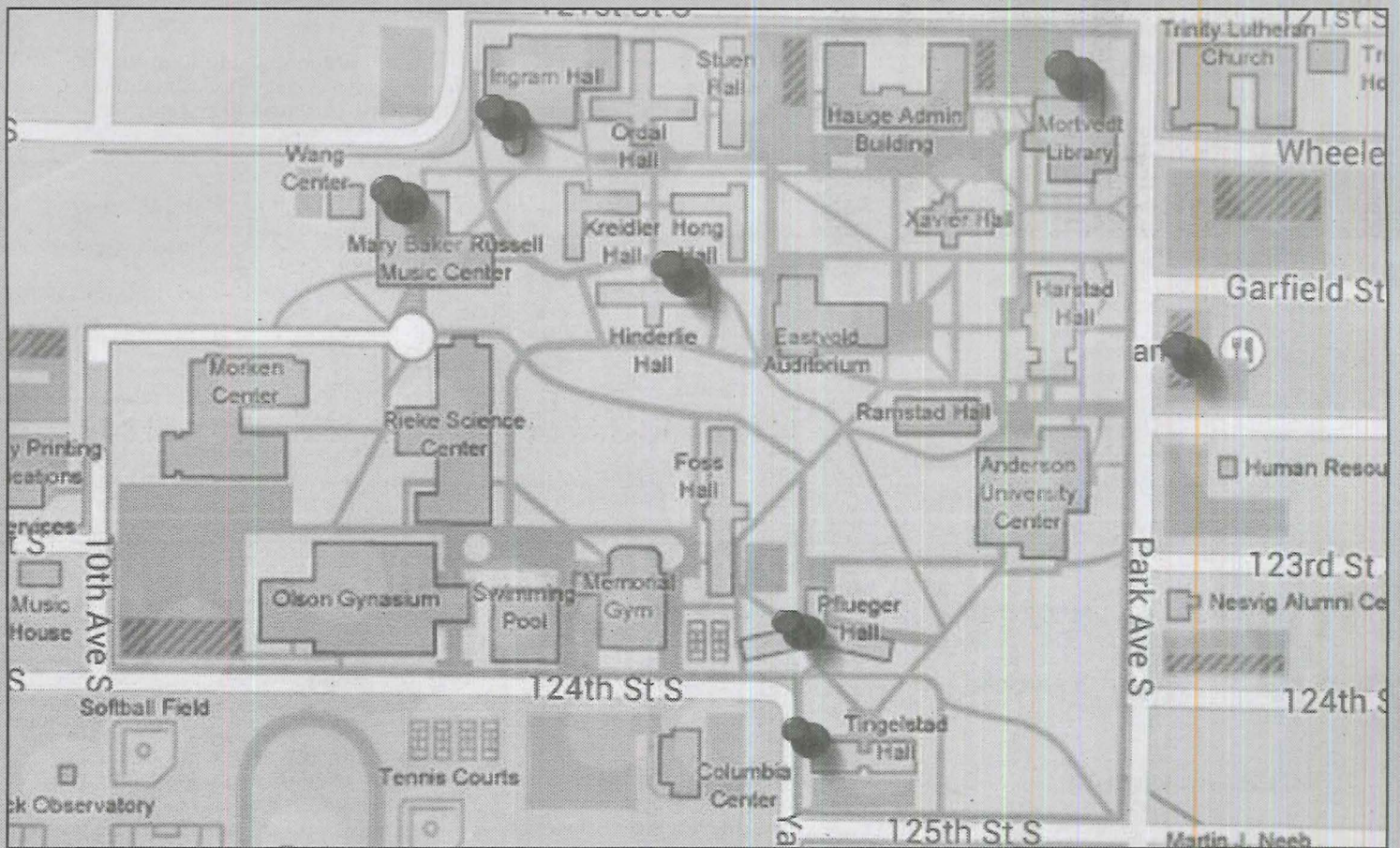
CSAF was called by a student whose car was stolen from Harstad Lot on Sept. 19. CSAF reviewed the surveillance footage and found two unidentifiable suspects. Pierce County Sheriff's Department has been notified.

### Medical Aid in Tinglestad

CSAF responded to a call from Tinglestad on Sept. 19, from a student who had sustained injuries while playing soccer in the Olson Field House. CSAF advised the student to go to the hospital and get X-rays. No further action has been taken.

### Alcohol Policy Violation

CSAF responded to a call from a Tinglestad RA on Sept. 19, who reported the odor of marijuana and no answer to a student's door after several knocks. CSAF officers and an RA entered the room and visually searched it, finding no marijuana, but finding alcohol cans in the trash. Later that night, CSAF and the RA returned to talk to the students. The students cooperated and handed over their alcohol, and said a guest had brought the marijuana and none was in the room anymore. A report has been filed to Student Rights and Responsibilities.



Martin J. Nech

# Dance delivers diverse options to PLU students

By **TERRAN WARDEN**

Guest Writer

Dance programs offered by Pacific Lutheran University give students a glimpse into a magical world of dance. Students are offered opportunities to audition for the Dance Team and Dance Ensemble, as well as minor in Dance.

## Dance Team 2014-2015

This year's Dance Team promises to be an amazing group this year, based off auditions for the team were held on Friday, Sept. 12.

"There is so much talent in the team selected this year," Dance Director Maureen McGill said.

The team is led by three captains: senior Elizabeth "Molly" Maloney, junior Amy Arand and junior Miranda Winter.

"The captains have outstanding leadership and talent," McGill said. "The keen leadership of the three captains will surely promote creative and challenging performances."

New members of the team, such as Lauren Castle, are excited to dance as a part of this team.

"The captains this year are so nice," Castle said. "I am so excited for the year!"

Team captains are proud of their selections.

"I am incredibly excited as it is my last year on Dance Team... The other captains and I are so proud of this talented group of dancers who bring a diverse set of strengths and styles to the team," Maloney said.

The captains of the team, along with Dance Director McGill, will be working on performances throughout the year in a

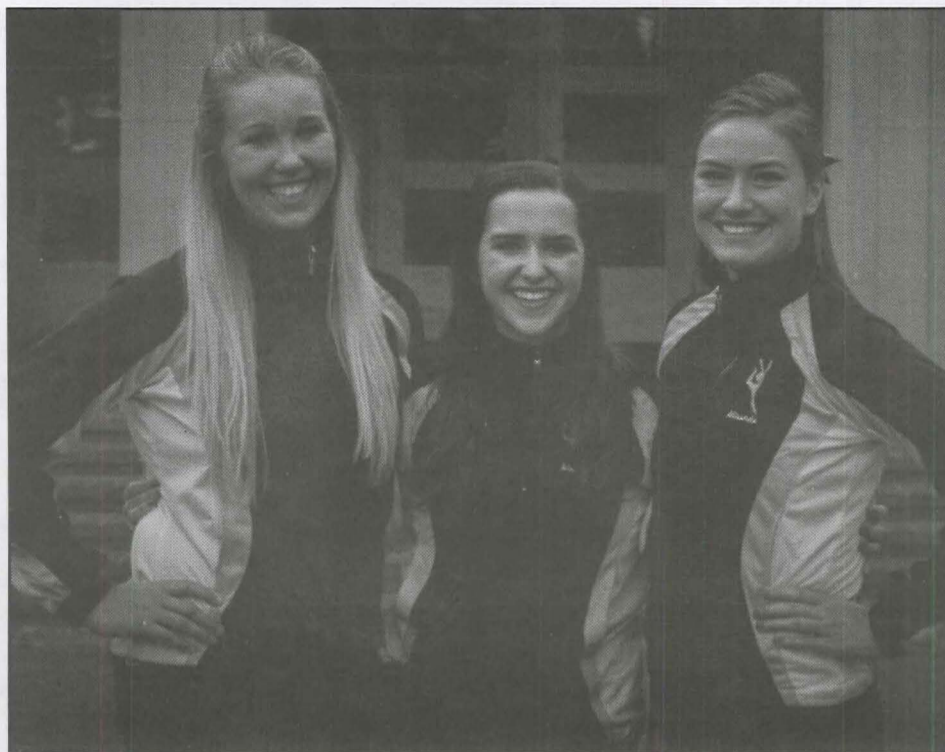


PHOTO COURTESY OF MOLLY MALONEY

This year's dance captains are junior Amy Arand, senior Molly Maloney and junior Miranda Winter (left to right).

variety of styles, including jazz, funk and modern. The team plans to perform six to seven routines this year, but the styles have yet to be determined. The hip-hop and pom routines will be new additions to the team's repertoire.

"The new styles should be an exciting challenge for us," Maloney said.

The 2013-2014 Dance Team competed in its first dance competition last year and is still discussing competitions for later in the 2014-2015 season.

The team will perform throughout

the year at Men's Basketball games, Fall Preview Day on Oct. 5 and Global GetDown on Nov. 21.

The Dance Team's second annual Winter Showcase will be held in the black box theater on Dec. 5.

## Dance Ensemble 2014-2015

PLU's Dance Ensemble is an opportunity for students to perform without being on the Dance Team and to choreograph their own routines, bringing their artistic visions to life in the

community.

The creative journey of the Dance Ensemble culminates with a final formal performance at the 2015 Spring Dance Concert.

To help create the exciting choreography for the final show, the PLU Dance page states Dance Ensemble will have help from dance faculty, alumnae and professional choreographers. The Dance Team is also involved and helps bring leadership and experience to the work of the Dance Ensemble.

Audiences of every technical dance level are invited to audition and participate. Auditions will begin on Nov. 7 in the Columbia Center Studio for student choreographers. Auditions for dancers will be held the first Friday of spring semester in the Columbia Center Studio.

"To anyone interested in choreography, bring your music, dance phrases and ideas," McGill said.

## The Spring Dance Concert

At the end of the Dance season, the Dance Team will join the Dance Ensemble for a final showcase. The show will be directed by Dance Director McGill and will showcase the student dancers, student choreographers and professional choreography of the 2014-2015 Dance season.

"The 2015 Spring Dance Concert promises to be a stellar one with so much incoming dance talent in the university," McGill said. "A variety of styles, music and ideas will wow the audience!"

For more information on Dance at PLU, contact Dance Director Maureen McGill via email at [mcgillma@plu.edu](mailto:mcgillma@plu.edu).

# Lyrics for Lutes: alma mater music needs words

By **KAITLYN HALL**

Copy Editor

Pacific Lutheran University is searching for lyrics for its new alma mater song commemorating the university's 125th anniversary.

Any member of the PLU community can enter the online lyrics contest, with the winning lyricist receiving two tickets to Teatro Zinzanni in Seattle.

"The idea is for people to essentially contribute to a crowd-sourced set of words," music professor Gregory Youtz said, "and anybody—current students, faculty, alum, staff—can throw lyrics against this tune, and somehow we will decide."

PLU's most recent alma mater tune — of the three or four songs used since PLU's inception—was composed in the 1950s and is clearly outdated, Youtz said.

By involving the PLU community, Youtz hopes the lyrics can have the same timeless, Lutheran quality as his piece. The selected lyrics will likely address themes of PLU, such as diversity, global education and sustainability.

"Every set of words reflects the values of the current generation, and maybe 50 years from now somebody will look at this and go 'Oh, this is so dated,'" Youtz said, "but what we're hoping is that at least for a while, these words will reflect who we are, what we value."

Youtz suggested potential lyricists

should avoid jargon and focus on words that invite people into the PLU community.

"They have to sound like we actually mean this," Youtz said, "so that when we sing it, we really do get that warm, gooey community feeling."

Youtz composed the new alma mater tune as part of his Lutheran Recessional, an alternative to PLU's beloved "Processional of Joy."

His recessional features folk music of PLU gateway program locations Trinidad, China, Mexico

and Norway in combination with famous Lutheran hymns, creating a piece meant to capture the identity of PLU. It can be superimposed on "O Day Full of Grace," which has a unique, antique three-phrase structure.

President Krise, who fronted the search for a new alma mater song, will partner with Youtz to select the lyrics. Krise felt it necessary that PLU develop a new piece of musical identity for students, staff, faculty and alumni, Youtz said.

Listen to the new alma mater song and submit lyric ideas to <http://plu.edu/lyrics>

# Movies with Michael

## 'Twins' shows depth, 'Lucy' feels hollow

By **MICHAEL DIAMBRI**

A&E Writer

### The Skeleton Twins

Rated R

Run Time: 1hr 33 min

As Maggie (Kristen Wiig) is about to down a deadly dose of sleeping pills, she receives a call from her estranged twin Milo (Bill Hader), who's in the hospital after a suicide attempt.

Maggie hesitantly makes room for Milo to come stay with her and her husband (Luke Wilson) in upstate New York. Realizing their lives are total messes, Maggie and Milo start looking for the reasons their lives went so wrong.

Those who like indie flicks will find this an enjoyable film, but it will not make sense for everyone. If you have never been estranged from someone who once meant the world to you, it's highly probable you will find no personal connection to the film.

Despite relating to it or not, one should be

able to notice Kristen Wiig ("Bridesmaids," "SNL") and Bill Hader ("Tropic Thunder," "SNL") manage to achieve a great balance of both perpetual sadness and quirky humor throughout the movie.

Along with the film's great stars comes great writing and a well-rounded supporting cast. "The Skeleton Twins" brilliantly portrays the bond of siblings and how familiar our dysfunctions seem.

One statement, made by Wiig's character, Maggie, sums up the melancholy vibe of the film: "Few people are stars, the rest of us are just walking around wondering how our lives got so bad."

Despite its sad premise, "The Skeleton Twins" shows us that sometimes when our lives fall apart, the most unexpected sources can be the ones to help put it back together.



### Lucy

Rated R

Run Time: 1 hr 29 min

Lucy (Scarlett Johansson) is a young American woman who's pressured by her boyfriend into carrying a mysterious briefcase to a Taiwanese gang leader. The contents of the suitcase are revealed to be a super-powerful drug called CPH4.

After being forced to take CPH4, Lucy is given access to a greater capacity of her brain than a regular human, slowly building up to 100 percent brain capacity throughout the movie.

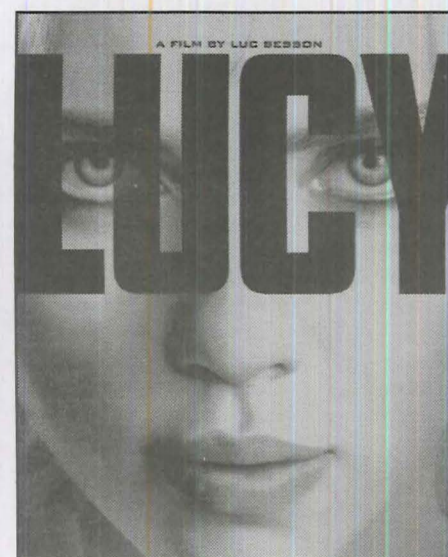
Lucy finds she needs the drug to survive and hunts it down. Lucy finds professor Norman (Morgan Freeman), an expert on the brain, to tell him all about her new abilities and knowledge. The action and intense pace continue to build as Lucy gains access to the powers of her brain.

This is the type of movie that might be better after smoking weed. "Lucy" captivates viewers with its great visual effects and intense action scenes, but the story line comes off as hollow, flawed, and bizarre. "Lucy" tries to make sense out of too many things at once, leaving much unexplained.

In addition, it's certainly not the best acting we have seen from co-stars Scarlett

Johansson and Morgan Freeman.

Overall, the film was entertaining but failed to meet the possibly great potential it possessed. It is worth seeing, but it's better saved for a Netflix night.



# From Emmys to 'Emily'

By **MATTHEW SALZANO**  
A&E Editor

The question every Lute is trying to answer: "What will you do with your one wild and precious life?" Juniors Camille Adams and Rachel Diebel are on their way, and students get to watch.

Diebel and Adams started answering the question in their freshman year. On assignment from *The Mooring Mast*, they created a video package together to accompany a story.

Former General Manager Storm Gerlock found out that Adams wanted to be a screenwriter. She encouraged Adams and Diebel to write and produce a show for Mast TV and they liked the idea.

"We literally just decided to," Diebel said. "If we had known what it entailed, we would have never had done it. But since we were so naive, we were like 'we can just film a thing,' like 'that's fine!'"

Two years later, Adams and Diebel are best friends, housemates and entering their third year writing original series for Mast TV.

Last year, their second show, "Impressions," contained six episodes, totaling sixty minutes of content. These sophomores' attempt proved to be quality.

"We submitted for a couple awards at the end of the year, and Camille

[Adams] ended up getting nominated for a Northwest Emmy," Diebel said.

She's making Adams a T-shirt about her Emmy nomination.

This fact is not well-known around campus, getting lost in the shuffle during end-of-year activities, so take note now. This is the first time in Pacific Lutheran University history that anyone has been nominated for a Pacific Northwest College Emmy in the Writing Category.

"We couldn't believe we were able to be there," Adams said. "Hearing all the speeches of professionals who have been in the business for twenty years, and this is [the professionals'] first Emmy, and they've been nominated

and nominated just waiting for this... It was phenomenal to think that we were just at the very beginning of that process at [the age of] twenty."

Their nomination has only fueled their wild ambition. Diebel, the director and producer said this year will be the most ambitious project yet.

"We want to win that Emmy!" she said. "This year's production is a lot more formal, planned and well put together than the previous years. We have a much bigger team than we've had in the past. The first year, it was literally just Camille and I doing everything. This year we have more official production team roles... It's going to look more official."

This year's show is "Dear Emily," a 24-episode adaptation of the children's book "A Little Princess" in a video blog style. It will premiere in the spring. The 18th-century book tells a hopeful story

of a young girl who, upon her father's death, loses everything but overcomes her miseries.

"The Little Princess' gets dark, as books of the 18th century for little girls go, like parental death is dark," Adams said. "So we're trying to get to some themes of privilege, and loss, and get those to an audience."

The production duo wants to get audiences to connect on a personal level.

"I think that it would be nice if people would consider their own privilege, especially in the United States attending, you know—its not Stanford, but PLU is a very nice university with a good reputation," Diebel said. "It's important for us to look at our own position. I hope that the show at least gives people some sort of pause."

Later this year, students can tune into "Dear Emily" on Mast TV. Students should pause and consider the grand, important themes of what is shaping to be another Emmy-worthy series and the nature of what Adams and Diebel are doing. They are passionate about their work, they are good at it and they are reaping in accolades.

In the words of junior Denae McGaha, actress in "Impressions" and "Dear Emily," "Look at the kind of results you can get if you just act on what you're interested in!"



PHOTO COURTESY OF CAMILLE ADAMS  
Juniors Camille Adams and Rachel Diebel at the 2014 National Academy of Television Arts & Sciences Northwest College Awards for Excellence ceremony.

## Center for Media Studies kicks off with mixer

By **ALLIE REYNOLDS**  
General Manager of Mast TV

The School of Arts and Communication hosted a party, celebrating the official opening of the Center for Media Studies (CMS) on Thursday, Sept. 18, at B Sharp Coffee House in downtown Tacoma.

Students, alumni, staff and faculty from the communication department, MediaLab and student media networked and caught up with one another, signaling the start of another busy school year.

During the event, MediaLab General Manager Amanda Brasgalla, MediaLab Faculty Adviser Rob Wells and Provost Steven Starkovich shared their ideas and hopes for CMS, which opened this semester in the School of Arts and Communication.

The CMS was created to bring the arts and communication departments, student media and MediaLab together and be a place where students can collaborate on different ideas in journalism, public relations, graphic design, art and theater.

By doing this, CMS will serve to improve the visibility of PLU as a place

where media convergence is not just talked about, but practiced daily.

Students will work on projects that are brought to the center from the community. As Communication professor Art Land explained, community members will come pitch their ideas to fellow Communication professor Joanne Lisosky, who then passes on her selections to Wells, who then decides what resources get allocated to this project—whether MediaLab, Graphic Design students, or any combination of the SOAC emphases.

"It's trying to bridge the campus and the professional world," Land said. "There's doing projects for class, which is all well and good, but we all know there's a different standard and a different expectation level for professional-level projects."

This new focus may

bring about more community-centered work that not only reflects PLU's mission of serving community, but invites more thoughtful inquiry. Students will take

a multidisciplinary approach in their SOAC education which faculty hopes will encourage fantastic results.

Matthew Salzano contributed to this article.



PHOTO BY ELISE ANDERSON  
Junior Camille Adams, senior Sam Horn, first-year Genny Boots and junior Natalie DeFord enjoy networking at the CMS Event.

## A glance at the Fall season

By **BRITTANY JACKSON**  
Copy Editor

Each fall, campus is buzzing with events, and this semester is no different. The calendar is full of performances by talented Lutes campuswide. Here is a look at some of the upcoming events.

Starting off the year is the University Jazz ensemble's first concert at 8 p.m. Oct. 3 in the Karen Hille Phillips Center. The ensemble will perform music ranging from classic big band jazz to modern contemporary styles. Tickets are \$8 for general admission, \$5 for seniors and free to the Pacific Lutheran University community.

A number of theatre performances will take the stage this semester. The first is the student-directed, dark comedy "The Play

About The Baby." This production blurs the line between reality and fantasy as a young couple must cope with the loss of a newborn baby and ultimately question whether the baby ever truly existed. Students can catch the show at 7:30 p.m. Oct. 10 and 11 in the Karen Hille Phillip Center.

Music will fill the air as the University Symphony Orchestra begins its busy season on Oct. 14 in Lagerquist Concert Hall. The performance begins at 8 p.m. and tickets are available through the Concierge Desk.

Students who enjoy singing can attend the Oct. 21 and 22 performances of the Fall Choral Concert in Lagerquist Concert Hall. Enjoy performances by the Choir of the West, University Chorale, University Singers and University Men's Chorus. Both performances are at 8 p.m.

Also on stage is the thoughtful play "The Boys Next Door," which explores the triumphs and frustrations of the daily lives of four developmentally disabled men. The cast features a group of fresh faces. With a total of eight spots, first-year students dominate the cast list. The show opens 7:30 p.m. Oct. 16 in the Karen Hille Phillips Center and runs through Oct. 26.

Musical theatre returns Oct. 30-Nov. 1 with the student-run production "Night of Musical Theatre." The production consists of a series of short musical sketches highlighting the funny and not-so-funny parts of being a young adult. Performances are at 7:30 p.m. in the Karen Hille Phillips Center.

The music continues with the talented voices of PLUtonic and HERmonic, PLU's men's and women's a cappella groups. Along with amazing voices, each group

### Fall Events

University Jazz Ensemble	Oct. 3, 8 p.m.
"The Play About the Baby"	Oct. 10 and 11, 7:30 p.m.
University Symphony Orchestra	Oct. 14, 8 p.m.
"The Boys Next Door"	Oct. 16, 7:30 p.m.
Fall Choral Concert	Oct. 21 and 22, 8 p.m.
"Night of Musical Theatre"	Oct. 30-Nov. 1, 7:30 p.m.
PLUtonic and HERmonic	Oct. 29, 8 p.m.

boasts regional and national achievements in high-level competition. Their first performance is 8 p.m. Oct. 29 in Lagerquist Concert Hall.

With all of these great upcoming performances this season, students should mark their calendars so they don't miss out on the fun.

# Welcome to Student Media

## The Mooring Mast

By **RELAND TUOMI**  
Editor-in-Chief

Welcome, fellow Lutes, to another academic year at Pacific Lutheran University.

PLU is known for its athletic department, music department and focus on social justice.

But one hidden gem at PLU is our Student Media. Social justice magazine *The Matrix*, literary magazine *Saxifrage*, radio station Lute Air Student Radio (LASR) and television station and newspaper combination Mast Media are all excellent outlets to express creativity and convey information.

This section of *The Mooring Mast*, "Lute Life," will showcase archived pieces from *The Matrix* and *Saxifrage* for those on campus who haven't seen them.

All student media at PLU is run by students, which means students are able to freely decide what they want to write about, rather than having a professor tell them what is considered "good" to write.

Student media is meant for the students, so go find something worth writing about, whether it's a news story, a work of fiction about birds,



PHOTO BY JESSE MAJOR

Reland Tuomi, senior, is the Editor-in-Chief of *The Mooring Mast*. She is a Communication major with an emphasis in PR and Advertising

an art piece representing a favorite TV show or anything you think other students would like.

Anything you would like.

## Lute Air Student Radio, a letter

By **OLIVIA ASH**  
LASR General Manager

Dear PLU,

Lute Air Student Radio may just be my favorite thing ever. Scratch that, LASR is my favorite thing ever. You may think LASR is just another college radio station. WRONG! We are also a family. We are passionate about music. We go record shopping together. We host concerts and open mics. And yes, we are also an online radio station.

LASR streams online at <http://www.plu.edu/lasr>. We have myriad shows— from ska to folk, and from pop to live ukulele tunes. We love it all.

To be a radio disc jockey, you don't need any particular major, or even have any knowledge of audio tech. We can teach you all that you need to know. The commitment is pretty minimal— each DJ hosts a show at least an hour each week; some overachievers do multiple shows or more than one hour. It's all up to you.

At the moment, LASR is not yet on air. We are doing a big tech overhaul, so it may be a few weeks until we are up and running. In the meantime though, if you are interested in joining the LASR family, please shoot me an email at [ashoj@plu.edu](mailto:ashoj@plu.edu).

LASR is a place to express yourself. It's a place to expand your musical horizons. It's a place to eat too much candy and meet new



PHOTO COURTESY OF OLIVIA ASH

Olivia Ash, senior, is the General Manager of Lute Air Student Radio (LASR). She is a Communication major with an emphasis in PR and Advertising.

people and relax with some tunes. It's your place. How's that for cheesy?

LASR love,  
Olivia Ash  
LASR General Manager

# A letter from social justice zine, The Matrix

By **ANGIE TINKER AND LAURA JOHNSON**  
Co-Editors of *The Matrix*

Campuswide, from conversations in the Commons to discussion in the Diversity Center, social justice is not just an expression heard only in passing. Rather, social justice is a thriving aspect of the culture at Pacific Lutheran University.

As a community, PLU has many strong voices and organizations centered on social justice promoting multi-faceted equality in our society and working as advocates and activists. The Women's Center, the Diversity center and Grass Roots Environmental Action Now (GREAN) are only a few of these organizations that enrich our campus. It doesn't stop there.

As PLU's social justice journal, *The Matrix* is more than just a publication. It's an opportunity for advocacy. We envision *The Matrix* as a significant aspect of our campus by being a platform for social justice dialogue, and, above all, a space for students to find their voices.

"A student-run, student-driven, and community-centered publication, *The Matrix* creates a space for multi-faceted conversations on social justice," said senior Ruthie Kovanen, a past editor of *The*

*Matrix*.

These conversations can take many forms: essays, poetry, artwork, music and much more. The power behind *The Matrix* resides in building an avenue and opportunity for truly united dialogue across campus.

The space we imagine *The Matrix* builds is important because it helps to rediscover our understanding of advocacy.

"*The Matrix* widens existing social justice conversations on campus and allows students to engage in a form of public activism that challenges the notion that rallies and protests are the only way to create change," Kovanen said.

As students, activism and advocacy can be as simple as picking up a pen or opening a computer. We at *The Matrix* hope to spark conversation and action instead of inaction in our community by encouraging students to participate, explore their passions for social justice and submit this year!

There is an exciting, new-beginning energy around campus this year. If you are interested in harnessing this energy to get involved, or are interested in submitting, check us out on our website. You can also find us on our Facebook page and on Twitter at @thematrixplu

We will be at the Open Mic



PHOTO COURTESY OF LAURA JOHNSON

Junior Laura Johnson is the Co-Editor of *The Matrix*, and is an English Literature major with a minor in Holocaust and Genocide Studies.

Night tonight, Friday, Sept. 26 and will be publishing our own upcoming social justice newsletter.

Let's start changing our campus one voice at a time!

Sincerely,

Angie Tinker and Laura Johnson  
Co-Editors of *The Matrix*

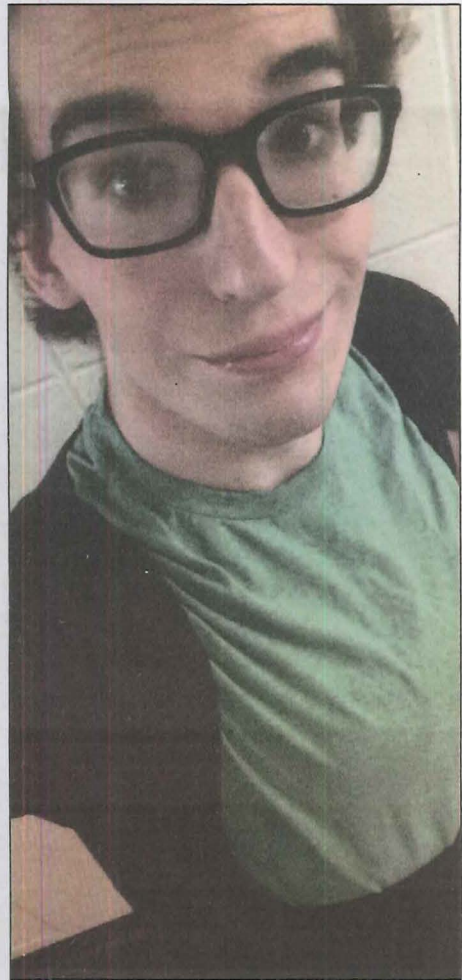


PHOTO COURTESY OF ANGELA TINKER

Junior Angie Tinker is Co-Editor of *The Matrix* and majoring in History with an emphasis in the Modern Era in China.

Like us on Facebook!

<https://www.facebook.com/PLUMastMedia>

Comments, questions or requests?

E-mail us at [mast@plu.edu](mailto:mast@plu.edu)

# An invitation from Saxifrage



PHOTO COURTESY OF JAKOB MAIR

Senior Jakob Mair is an English Poetry Writing and Philosophy double major and is a co-editor of *Saxifrage*.



PHOTO COURTESY OF MEG DOLDE

Senior Meg Dolde is an English Writing major and is a co-editor of *Saxifrage*.

By **JAKOB MAIR AND MEG DOLDE**

Co-Editors of *Saxifrage*

You may have seen copies of a book with a golden flower and the number 40 engraved on its kaleidoscopic cover.

You may have opened this book and found it full of student poetry, prose, photography, paintings and musical compositions. You may have been intrigued and asked yourself, "what is this beautiful artifact I find in my hands?"

Or you may not have even seen this

book, and are wondering exactly what this strange thing is.

The answer to both of these questions is this: that book is the latest edition of *Saxifrage*, Pacific Lutheran University's premier literary and art magazine.

Founded in 1975, *Saxifrage* has published 40 collections of poetry, prose, art, photography and music. *Saxifrage* is written by and for PLU students, faculty and alumni—a book by the people, for the people.

*Saxifrage* is also committed to fostering a community of artists on campus, hosting events throughout the year to offer a venue for creatives to showcase their work. Be on the lookout

for open mics, art gallery events and author readings—they're coming your way. *Saxifrage* is also proud to have a column in *The Mooring Mast* that showcases outstanding work from its past issues as well as entirely new creative work.

*Saxifrage* accepts year-round submissions for publication in the magazine and its weekly column right here in *The Mooring Mast*. Send all submissions, questions, rants, raves, ponderings, wanderings and general thoughts to [saxifrag@plu.edu](mailto:saxifrag@plu.edu). You can also find *Saxifrage* online at Facebook, Twitter and on the PLU website at <http://saxifrage.plu.edu>.

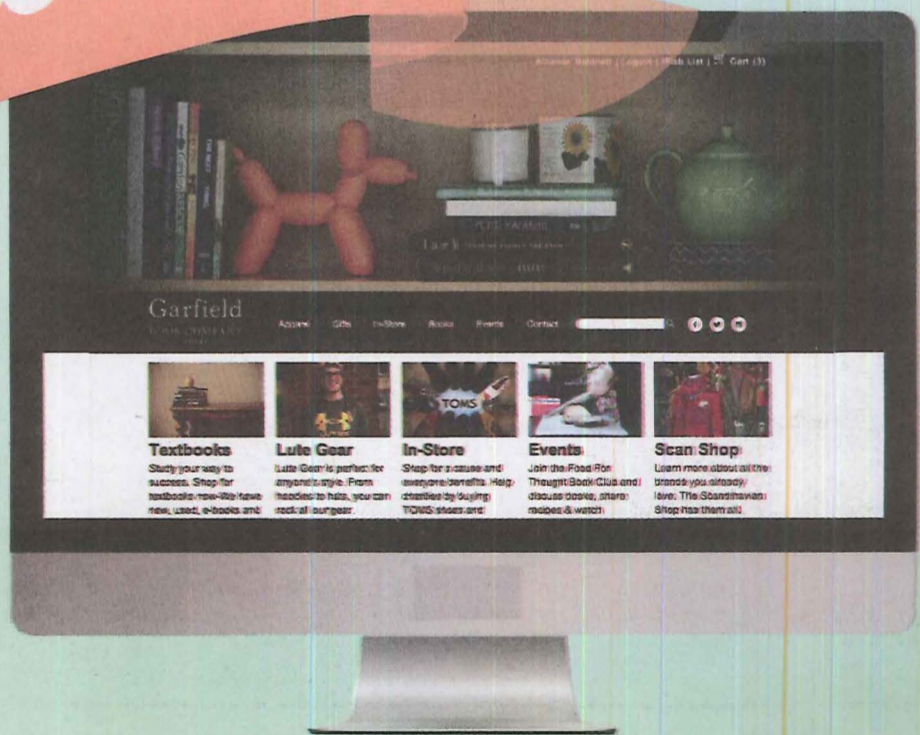
If you would like to join any of these organizations, look for them on Facebook, Twitter and each organization's website, or visit <http://www.plu.edu/studentmedia/>

## NEW WEBSITE

# Welcome

### 25% OFF YOUR TOTAL PURCHASE + FREE SHIPPING!\*

### ONLINE NOW



# [www.GarfieldBookCompany.com](http://www.GarfieldBookCompany.com)

\*Discount & free shipping is automatically applied to your order. Excludes textbooks and course materials. Online only.

Garfield  
BOOK COMPANY  
— AT PLU —



# Practice political participation this election

By PHILIP PASSANTINO  
Guest Writer

The results of Election Day on Nov. 4 will determine the path of the United States for the next two years, which is why it's so important to vote.

Some might not know that there's an upcoming election. The U.S. Constitution mandates that elections for the House of Representatives and for about one-third of the Senate be held every two years.

The last congressional election was held in 2012, at the same time as the presidential election, which means the next congressional election will be held this year. There will also be state and local races on the ballot, but I'm going to focus on what's at stake on the federal level.

Currently, members of the Republican Party control the House of Representatives, while members of the Democratic Party control the Senate. This has led to legislative deadlock

where few bills are agreed upon by both houses. When there's a deadline for Congress to act, a compromise bill is often passed at the last minute or even after the deadline, evidenced by last year's government shutdown.

This isn't a fault of the system, because it makes it difficult for one group to completely control the government and abuse its power. If members of the same party controlled both houses of Congress, though, they'd be able to get along more easily than they do now.

The House isn't likely to switch party control this year. This has to do with numerous factors such as gerrymandered congressional districts, according to Larry Sabato, the director for the University of Virginia Center for Politics. Regardless, it's still important to vote in House elections.

"The reason to vote is not because of a big issue, it is an act of citizenship," said Michael Halvorson, Pacific Lutheran University associate history professor.

The big issue for Senate elections is that Republicans can gain the majority. The Republican Party needs a net gain of six seats to take control of the Senate. There are seven states holding Senate elections currently represented by a Democrat, but were won by Governor Mitt Romney in the last presidential election.

A Republican in each of these states has a realistic chance of defeating the Democratic incumbent or winning an open seat that a Democratic senator currently holds. It's even a possibility that Republicans can defeat Democrats in states that President Obama won in the last

presidential election.

If Republicans take control of the Senate, they'll make sure President Obama does not overstep his authority by using the Senate's committees to investigate abuses of power, according to David Nather from POLITICO.

It's entirely possible that President Obama and congressional Republicans are able to compromise and get things done, like President Bill Clinton and congressional Republicans did in the 1990s, but there's also a chance that they'll be unable to get along and few things will get done legislatively.

If Democrats maintain control of the Senate they'll focus on raising the federal

minimum wage, even though Senate Republicans will block them because they believe it'll burden businesses and lead to layoffs. The difference between a Republican Senate and a Democratic Senate will determine what issues Congress tackles for the next two years.

It's true that one vote will almost certainly not make a difference in a federal race, but if thousands of people think like that and do not vote, that'll make a difference. Many brave Americans have died protecting our freedoms. It'd be a shame if we didn't take advantage of our freedom.

PLU LuteVote is a project branched from ASPLU that encourages students to vote and increase civic participation. Visit their website at <http://www.plu.edu/asplu/misc/Lute-Vote.php> to register to vote!

Please  
recycle your copy of  
The Mooring Mast



follow us on Twitter  
@PLUMastNews

## Student Media: Back in full force

By ALLIE REYNOLDS  
Mast TV General Manager and Online  
Editor

After a rough summer and late beginning, student media is back and ready for another year here at Pacific Lutheran University. When the new media outlet heads were hired at the end of last year, we honestly had no idea what we were in for.

Cut to the summer and the student leaders of Mast Media, *Saxifrage*, *The Matrix* and Lute Air Student Radio are meeting with our various faculty and staff advisers about changes for this year, including pretty big budget cuts and a new class to add to our already hectic schedules.

That isn't stopping us from making the best of a situation. We're lucky to have a great, dedicated team of student media leaders who are open to new ideas,

working together as a team and the idea of convergence.

That's why while student media will be producing the same newspaper, news program, radio shows and magazines you know and love, we'll also be mixing it up a little bit to work closer together with one another and work on PLU's student media convergence.

So here's what you can expect from student media this year: Mast Media will still produce a weekly newspaper, *The Mooring Mast*, but you'll now find new section "Lute Life" in the middle of the paper.

"Lute Life" aims to reach all aspects of the PLU campus we don't usually see, like archives from *The Matrix* and *Saxifrage* as well as columns from current LASR disc jockeys and more news from Morken and Rieke, the science-centered buildings on lower campus.

Mast Media is also now part of the Northwest News Connection, a coalition between other private universities in the area including Whitman College, George Fox University, Willamette University and Whitworth University.

Each week, we'll be featuring a story from each school on our website in order to form a better connection and friendship with colleges in our area while also sharing their stories with the PLU community.

Mast TV has gotten some new upgrades including a new Tricaster, which will improve the quality of our weekly news broadcast, News @ Nine, which will begin sometime in the next couple of weeks. Stay tuned!

We'll also be airing a new entertainment series, "Dear Emily," which is written and produced by juniors Camille Adams and Rachel Diebel and will air on Mast TV later in the spring semester.

In addition to "Dear Emily," other entertainment shows are also in the works, so Mast TV will not only be your source for PLU news, but also a place where you can gather around the TV with your friends and enjoy stories fellow Lutes have created for the small screen.

PLU's social justice magazine, *The Matrix*, will be producing a newsletter as well as a magazine at the end of each semester.

Literary magazine *Saxifrage* will be having more of an online presence this year and will co-host Open Mic nights with LASR and *The Matrix* where students can showcase their creativity and talent in any form they wish. The first one will be tonight, Sept. 26, with more to follow throughout the semester.

This year, you'll see a lot more convergence between the various student media outlets on campus. We're excited to bring the PLU and Parkland community events, news, entertainment and a source of creativity.

One of the reasons why student media is so important on the PLU campus is that it helps create a community. This year you'll notice a cohesive bond between media outlets on campus.

Stay tuned, Lutes! Student media is coming at you full-force this year.

"This year, you'll see a lot more convergence between the various student media outlets on campus."

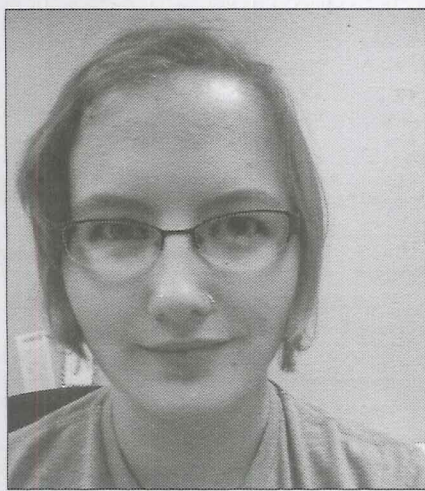


PHOTO BY ALLIE REYNOLDS

Mast TV General Manager and Online Editor Allie Reynolds (left) taking a selfie with 2013-2014 Mooring Mast Editor-in-Chief Jessica Trondsen (middle) and current Mast Editor-in-Chief Reland Tuomi (right).



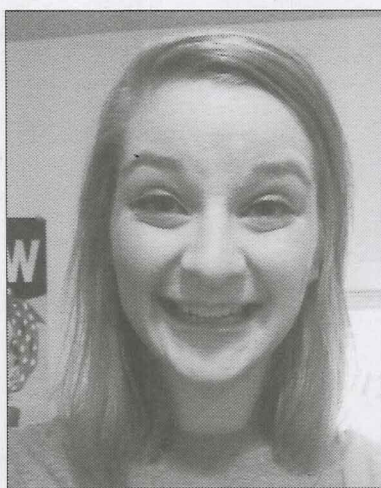
# Meet Mast Media



**RELAND TUOMI**

*Editor-in-Chief*

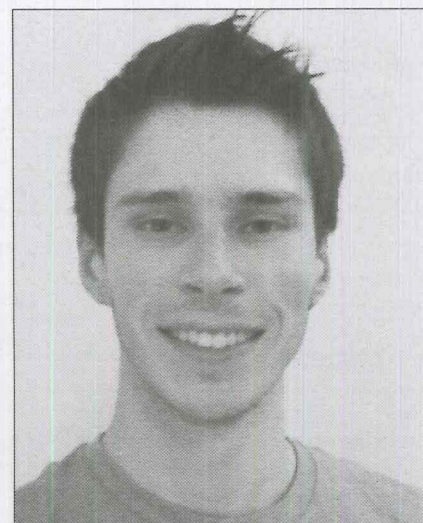
Reland is a senior majoring in PR and minoring in Marketing. She loves corgis, Chipotle burritos and being sassy.



**ALLIE REYNOLDS**

*Mast TV General Manager*

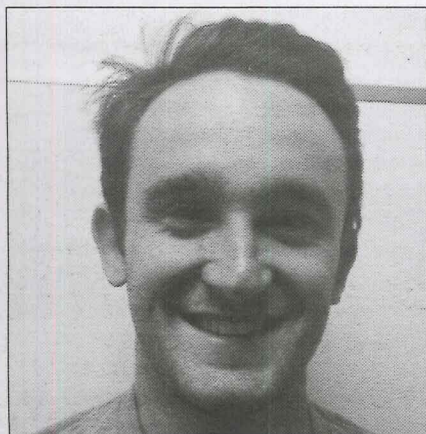
Allie Reynolds is a senior majoring in Journalism and minoring in Women and Gender Studies. Allie enjoys playing Nancy Drew computer games and pretending she's best friends with Mindy Kaling and Leslie Knope.



**CAMPBELL BRETT**

*Multimedia Editor*

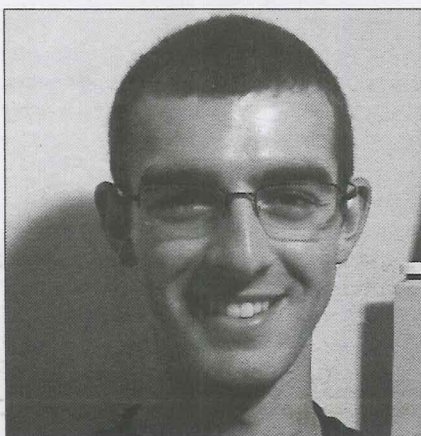
Campbell is a Senior Business major, enjoys spending his time editing video and composing music. He is also a student DJ and involved with the PLU Swing Dancing Club.



**ZACHARY BOYLE**

*News @ Nine Producer*

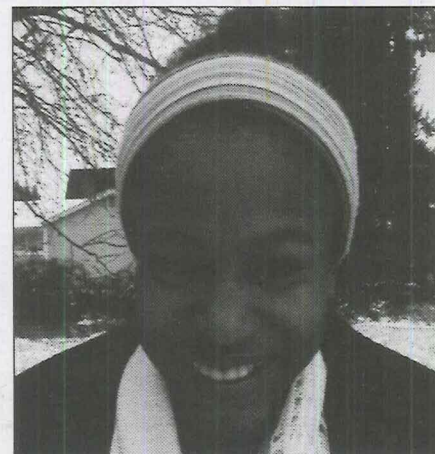
Zachary Boyle is a senior Biology major. This is his second year involved in student media. In his spare time, Zach likes to add Sriracha to every food imaginable and make bad pun jokes.



**BJORN SLATER**

*Business and Ads Manager*

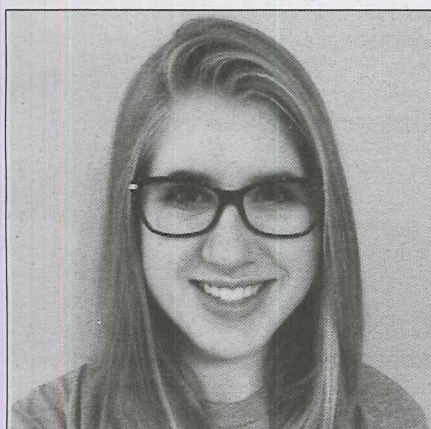
Bjorn is a senior Business major with a concentration in Finance. He's also a men's ultimate frisbee team captain and loves to barbecue.



**BRITTANY JACKSON**

*Copy Editor*

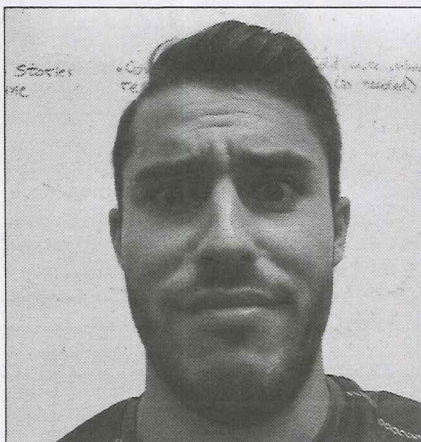
Brittany is a senior English major and Communication minor. She loves quoting *Harry Potter*, traveling and chai tea lattes.



**KAITLYN HALL**

*Copy Editor*

Kaitlyn is a first-year Journalism and Hispanic Studies major. She also plays violin in USO. Read and follow her blog, <http://alogophileslexicon.wordpress.com>.



**GIANCARLO SANTORO**

*Sports Editor*

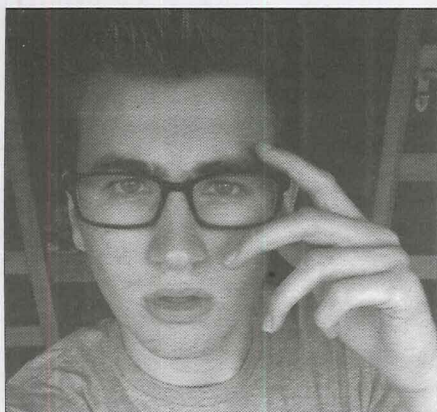
Giancarlo is a senior Journalism major and sports enthusiast.



**ASHLEY GILL**

*Opinion Editor*

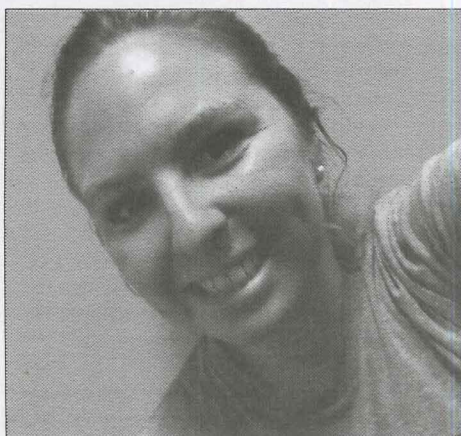
Ashley is a senior Social Work major with a minor in Sociology. She also enjoys video editing for News @ Nine.



**MATTHEW SALZANO**

*A&E Editor*

Matthew Salzano is a first-year Communication major coming from Spokane, WA. He serves as President of the Foss Residence Hall Council. Make sure you follow him on twitter — @matthew\_paul.



**SAMANTHA LUND**

*News Editor*

Samantha is a junior Journalism major. She is the captain of the Women's Tennis team, and thinks all puns are awesome!

POSITIONS  
AVAILABLE  
Apply online at  
<http://www.plu.edu/career-connections/>

# SPORTS SCOREBOARD

## Football

TEAM	WINS	LOSSES	TIES	CONFERENCE	STREAK
Whitworth	3	0	0	1-0	Won 3
Linfield	2	0	0	0-0	Won 2
Willamette	2	0	0	0-0	Won 2
PLU	1	0	0	0-0	Won 1
Puget Sound	1	1	0	0-0	Lost 1
George Fox	0	2	0	0-0	Lost 2
Pacific	0	2	0	0-0	Lost 2
Lewis & Clark	0	1	0	0-1	Lost 3

LUTES' UPCOMING GAME: Sep. 27 vs. Trinity (Tex.), 4:00 p.m.

## Women's Soccer

TEAM	WINS	LOSSES	TIES	CONFERENCE	STREAK
Lewis & Clark	4	1	2	2-0-1	Tied 1
Whitman	4	2	1	2-0-1	Tied 1
Puget Sound	4	1	0	2-0	Won 4
Linfield	5	1	0	2-1	Won 1
PLU	3	2	1	1-1	Won 1
Pacific	4	3	0	1-1	Lost 1
Willamette	2	5	0	1-2	Won 1
George Fox	0	4	2	0-2	Lost 3
Whitworth	1	5	1	0-3	Lost 4

LUTES' UPCOMING GAME: Sep. 27 vs. Lewis & Clark, 12:00 p.m.

### AROUND THE LEAGUE...

**FOOTBALL:** Northwest Conference football coaches named Linfield as the pre-season favorite to lift a sixth straight NWC Gridiron title. The Wildcats took last year's title with a perfect 6-0 record and went all the way to the NCAA Division III Playoffs before losing to the eventual champions.

**MEN'S GOLF:** Willamette senior Ryan Kukula took first place at the Pacific Fall Opener at the Quail Valley Golf Course with a career best score of 64 over 18 holes, helping Willamette finish in second.

**CROSS COUNTRY:** The PLU Men's and Women's Cross Country teams competed in the 2014 University of Washington Sundodger Invitational over the past weekend that featured over 400 student-athletes and 20 programs. PLU junior Arnie Wilson was the women's top racer with an 88th place finish.

Courtesy of <http://www.nwcsports.com/landing/index>

## Men's Soccer

TEAM	WINS	LOSSES	TIES	CONFERENCE	STREAK
Puget Sound	5	2	1	2-0	Won 5
PLU	5	3	0	2-0	Won 4
Whitworth	6	0	1	1-0-1	Won 1
Linfield	3	3	1	1-0-1	Won 1
Willamette	4	4	0	1-1	Lost 2
Pacific	3	4	0	0-2	Lost 2
Whitman	3	4	0	0-2	Lost 2
George Fox	2	14	1	0-2	Lost 2

LUTES' UPCOMING GAME: Sep. 27 vs. Linfield, 2:30 p.m.

## Volleyball

TEAM	WINS	LOSSES	TIES	CONFERENCE	STREAK
PLU	9	2	0	2-0	Won 2
Linfield	3	4	0	2-0	Won 2
Willamette	6	5	0	1-1	Won 1
Pacific	5	5	0	1-1	Won 1
Whitman	5	6	0	1-1	Lost 1
Puget Sound	2	9	0	1-1	Won 1
George Fox	2	10	0	1-1	Lost 1
Whitworth	7	4	0	0-2	Lost 2
Lewis & Clark	6	5	0	0-2	Lost 2

LUTES' UPCOMING GAME: Sep. 26 vs. George Fox, 7:00 p.m.

# Santoro Speaks... Change is good

By **GIANCARLO SANTORO**  
Sports Editor

To be as cliché as possible, with every new year comes new responsibilities. As students and student-athletes are starting to get more and more settled in for the long haul that is the school year, they are also becoming acquainted with their scholarly and social obligations.

It is a time for change for everyone, whether first-year or senior, and *The Mooring Mast* is no different. There has been a change of guard here at *The Mast*, but the quality of the paper will always be a constant in the ever changing landscape of Pacific Lutheran University.

While writing for *The Mast* as a staff sports writer last year, I learned a lot about the ins and outs of student media.

As a senior, I have become accustomed to people relying on me to get things done to the best of my ability, and part of what makes PLU great is that it expects this out of the entire student body.

As the new Sports Editor, I will be taking on a leadership role which I am not familiar with but am excited to be part of. Lute student athletes are some of the best and most feared competitors in the state and they demand excellence every time they step out to compete.

For those that don't know, *The Mast* is an award-winning, student-run newspaper with a staff dedicated to getting the news to the PLU community. My job is not only to make sure that PLU sports teams are covered in an accurate and timely manner, but that they are interesting and

worth reading.

As with any organization, we will make mistakes. But we will be sure to hold ourselves accountable for correcting those mistakes as quickly as possible.

After playing on the PLU Men's Soccer team and going out to support my fellow Lutes for the last four years, I know what it is like to be both an athlete and a fan. The sports section will do its best to reflect that.

Sports have the ability to bring people together in ways that other things can't, and the PLU sports tradition is only getting stronger every year. I hope you will join me and the rest of *The Mast* staff in welcoming the new school year, and I hope to see you on the court, field, pool or track in full voice.

Go Lutes.

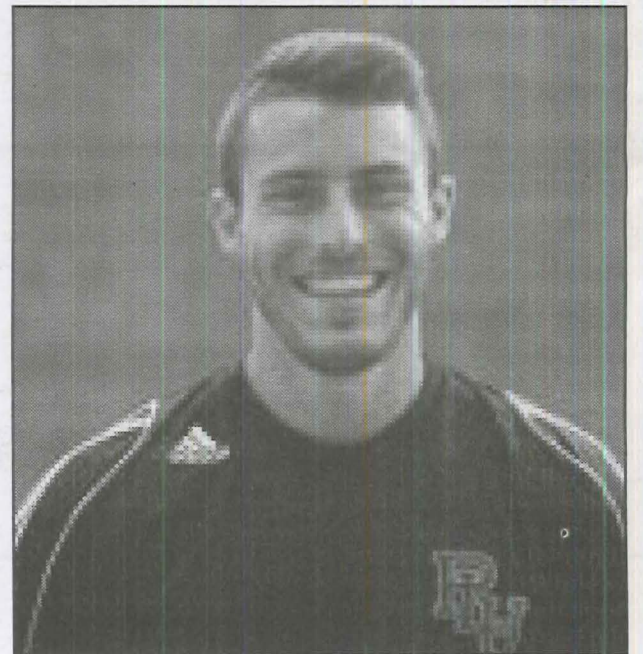


PHOTO COURTESY OF ATHLETICS COMMUNICATIONS

## Women's Golf takes fourth at Pacific Fall Opener

By **TYLER SCOTT**  
Director of Athletics Communications

Senior Emily Cook's second-place performance paced the Pacific Lutheran Women's Golf team over the weekend, as the Lutes finished fourth at the Pacific Fall Opener at Quail Valley Golf Club.

Cook followed Saturday's first-round 74 with a second-round 81 to finish with an 11-over 155, three strokes behind Whitman's Kelly Sweeney (71-81-152), who took medalist honors. Jeankie-Jhen Aczon tied for eighth at 19-over 163 (83-80), while Desirae Haselwood was two strokes behind her (85-80-165) to tie for 13th.

Madison LaVergne (91-91-186) and Kadyr Coltom (92-102-194) rounded out the PLU quintet, while Anna Jessen played as an independent and finished with a weekend total of 177 (87-90). As a team, PLU posted rounds of 333 and 336 to finish at 669, 93-over-par. Whitman won the team crown at 632 (309-323), with Willamette taking second (324-

334-658) and Whitworth taking third (334-328-662). Lewis & Clark placed fifth (353-352-705), followed by Linfield (374-356-730), Pacific (403-394-797) and Puget Sound (440-447-887).

PLU has next weekend off before heading to the Whitworth Invitational on Oct. 4-5 at Canyon Lakes Golf Course.

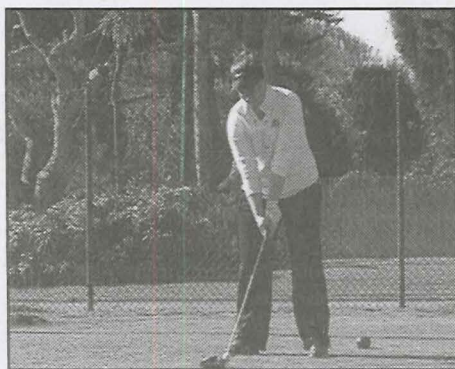


PHOTO BY ATHLETICS COMMUNICATIONS

Emily Cook, senior, leads PLU to a fourth place finish in Oregon.

## Lutes finish 11th at St. Martins Invitational



PHOTO BY ATHLETICS COMMUNICATIONS  
PLU's Justin Lee takes a shot at the Saint Martin's Invite. Lee finished 11th against mostly NCAA Division II schools.

By **TYLER SCOTT**  
Director of Athletics Communications

The Pacific Lutheran Men's Golf team concluded the Saint Martin's Invite ranked 11th on the team leaderboard following three rounds in two days at Olympia Country & Golf Club.

Taking on almost exclusively NCAA Division II programs, the Lutes wrapped

the weekend 63-over-par with a team score of 915 (298-309-308) at the par-71, 6180-yard course. Western Washington claimed the team title with a weekend total of 838 (14-under-par), while Simon Fraser placed second (844, 8-under) and British Columbia placed third (850, 2-under).

Junior Justin Lee was the Lutes' top placer, following a first-round 72 with back-to-back rounds of 77 to finish with a 13-over 226 to tie for 44th. First-year Mitchell Baldrige was one stroke behind (76-73-78-227) to tie for 47th. Junior Zach Martinson tied for 55th (76-79-75-230), with sophomore Thomas Huddleston tying for 60th (74-81-78-233) and junior Ryan Fenton (77-80-80-237) and junior Sevrin Modahl (78-80-79-237) tying for 66th. Western Washington's Anthony Allen and British Columbia's Evan Holmes shared medalist honors at 6-under 207 for the weekend.

The Lutes have the next two weekends off before returning to action Oct. 11-12 at the Culturame Classic down in Aloha, Ore., at The Reserve Golf Club.

# Men's soccer breezes through competition on first weekend of Northwest Conference play

By **GIANCARLO SANTORO**  
Sports Editor

The Pacific Lutheran University Men's Soccer team got off to a flying start in the opening games of Northwest Conference play at home against Oregon schools George Fox and Pacific.

## Game 1

Eager to push on from back-to-back preseason wins last week, a youthful Lutes team were quick and efficient against George Fox and opened up Northwest Conference play with a 2-0 home win.

"We knew coming in that with such a young team and so many new players that it might take us a while to gel," PLU head coach John Yorke said. "The fact that we played three consistent top 25 teams in the nation in preseason from around the West Region has really helped get us ready for conference play."

After a scoreless opening 30 minutes, the Lutes' hard work finally paid off when junior Jordan Downing found the net in the 34th minute. A thorn in the side of the Bruins all game, Downing collected a pass from sophomore KC Phillips and made no mistake with the finish, blasting it into the upper corner for the Lutes' first goal of conference play. It was Phillips' first assist of the season.

"Scoring the first goal is always the hardest part, but after that it gets easier," Downing said. "I'm just happy it came early in the season, and it gives me a boost of confidence for the rest of the year, which is something that didn't happen my first two years."

Both teams had a couple of decent chances but went into

halftime with the score 1-0 for PLU.

Picking up where he left off in the first half, Downing added his and PLU's second goal of the game just three minutes after the restart to make it 2-0.

Sophomore Junior Loreto got his first assist of the season when he picked a pass to Downing who hit a low drive across the keeper from the top of the box to put the game beyond the Bruins.

"The first win is always good because it provides confidence within our team," senior Justin Manao said. "It shows the team that every game means something in conference play."

The Lutes were dominant on offense and came away from the game with 13 shots, three on goal compared to George Fox's nine and two on goal. Both goalkeepers were relatively untested, with PLU junior goalkeeper Mike Arguello making two saves, while George Fox's Ricardo Sotelo made only one.

"I was happy with the team's performance overall," Yorke said. "We are nowhere near what our potential is yet, but we keep making progress and continue to get better. I was happy with how the game went."

With the win, PLU improved to 4-3 overall and 1-0 in NWC play. George Fox fell to 2-4-1 overall and 0-1 in conference.

## Game 2

Despite going a goal down to start the second half, PLU roared back with three unanswered goals to snatch a 3-1 Northwest

Conference victory against the Pacific University Boxers on Sunday at East Field.

For the second day in a row, junior Jordan Downing could not be kept off the scoreboard and his two goals, the first a game winner, earned all three points for the Lutes.

"It was very important to come out and get two wins especially because the team is young this year," Downing said. "We are trying to develop as a unit and prove that we can win just like the classes before us."

Although a whopping 38 shots were taken by both teams combined throughout the game,

Elan Yogi.

The goal seemed to wake the Lutes up, and it was one way traffic from then on.

It didn't take long for PLU to level the score, and they did so after Pacific goalkeeper Leyton Thommasen took down sophomore Junior Loreto inside the box. Loreto scored the third goal of the season from the penalty spot to tie the game 1-1 in the 63rd minute.

With the game looking destined for overtime, sophomore transfer Nate Popp found Downing on a run through the Boxer defense in the 82nd minute. Once again, Downing made no mistake with the finish and buried it from close range.

Downing wrapped up the scoring two minutes later in the 84th minute to make it 3-1 after scoring on a clear shot following a pass from senior Justin Manao. It was Downing's team-leading fifth goal of the young season.

"George Fox and Pacific both had down years last year, but I think both of them were much improved," Yorke said. "It is really important that we continue to beat the teams that we have finished ahead of in recent years."

PLU junior goalkeeper Mike Arguello finished the game with six saves compared to five for Pacific's Thommasen. With the win, PLU improves to 5-3 overall, 2-0 in NWC, while Pacific falls to 3-4 overall, 0-2 in conference.

"It was huge to get six points at

"We are nowhere near what our potential is yet but we keep making progress and continue to get better."

**John Yorke**  
Men's soccer head coach

the first half finished scoreless at 0-0.

"We had to make some mental adjustments," PLU head coach John Yorke said. "I believe the players were also forced to realize the need for playing at a higher intensity and speed of play, and that really helped."

The Lutes' quick passing game and speed of Downing left the Pacific defense exposed numerous times, but it was the Boxers who took the lead against the run of play in the 50th minute. Pacific's Andrew Tanaka scored off a shot from 10 yards on an assist from



PHOTO COURTESY OF ATHLETICS COMMUNICATIONS

PLU junior Jordan Downing (15) prepares to kick the ball downfield. Downing scored two goals in each game this past weekend to help the Lutes go 2-0 in opening NWC play.

home in the first weekend," Yorke said. "It creates excitement and belief within the team and gives us some juice to carry through the week as we prepare for our trip to Oregon."

The Lutes return to action this weekend when they head to Oregon to face off against Linfield and Willamette.

# Golden goal gives women's soccer first win



PHOTO BY DAVID MAIR

Rozell (grey) attempts to steal the ball from a Pacific defender and send the Lutes on the attack. The Lutes are hoping to improve on last season's third place finish and are off the mark in Northwest Conference play.

By **DAVID MAIR**  
Sports Writer

Coming off the back of a 1-0 Northwest Conference loss to rivals University of Puget Sound earlier in the week, the Pacific Lutheran University women's soccer team bounced back last Sunday against the Pacific University Boxers at home on East Field.

It was a bright and sunny afternoon and the stands

were full in anticipation of the Lutes' first home conference game.

The game kicked off with PLU taking charge of the field and both teams playing well and moving the ball quickly. The Lutes kept pressing the ball inside the Boxer half for the better part of the game, but the Boxers looked dangerous on the counter.

Although the Lutes were able to prevent the Boxers

from scoring in the first half, they couldn't open the scoring either despite taking seven shots. The first half ended 0-0.

"We especially moved first to the ball and won it in the air the majority of the time, which helped us keep possession more than Pacific," first-year forward Kelsey Hathaway said.

During the second half, the Lutes were even more aggressive. After taking seven shots in the first half, compared to just one for Pacific, PLU continued to look dangerous going toward goal.

Despite taking seven shots again in the second half, PLU could not find a way past a stubborn Boxer defense.

PLU came close to winning it with two minutes left in the game off shots from Hathaway and junior Emily Hanna, but both missed wide, guaranteeing the game would go to overtime.

Hoping to make their statistical dominance count, the Lutes came out strong again in overtime. With both teams starting to tire, PLU junior Lauren Larson kept running at the Boxer defense, causing near goals.

Against the run of play, it was Pacific who almost stole it

in the 95th minute off a shot by Deanna Quadrel that went just wide. The game would go to double overtime with the the score still tied at 0-0.

As the heat began to take a toll on both teams, PLU got their winner in the 106th minute of double overtime when senior Blake Warner crossed to Larson for the golden goal, sparking the Lute bench to rush the field in celebration.

Hathaway credited PLU's drive and perseverance as

what the team will take away from the win.

PLU sophomore goalkeeper Takara Mitsui made three saves in the game compared to five for Pacific's Kristina Morris.

With the win, PLU improved to 3-2-1 overall and 1-1 in NWC. Pacific dropped to 4-3 overall, 1-2 in conference.

PLU will prepare to face off against Oregon schools Lewis & Clark and George Fox at noon Sept. 27 and 28.



PHOTO BY DAVID MAIR

Sophomore forward Kaylie Rozell dribbles the ball toward the Pacific defense. The Lutes needed a goal from junior forward Lauren Larson in double overtime to defeat the Boxers.

# Lutes hold off Whitworth in Northwest Conference opener

## Pirates force a fifth set but lose 3-2

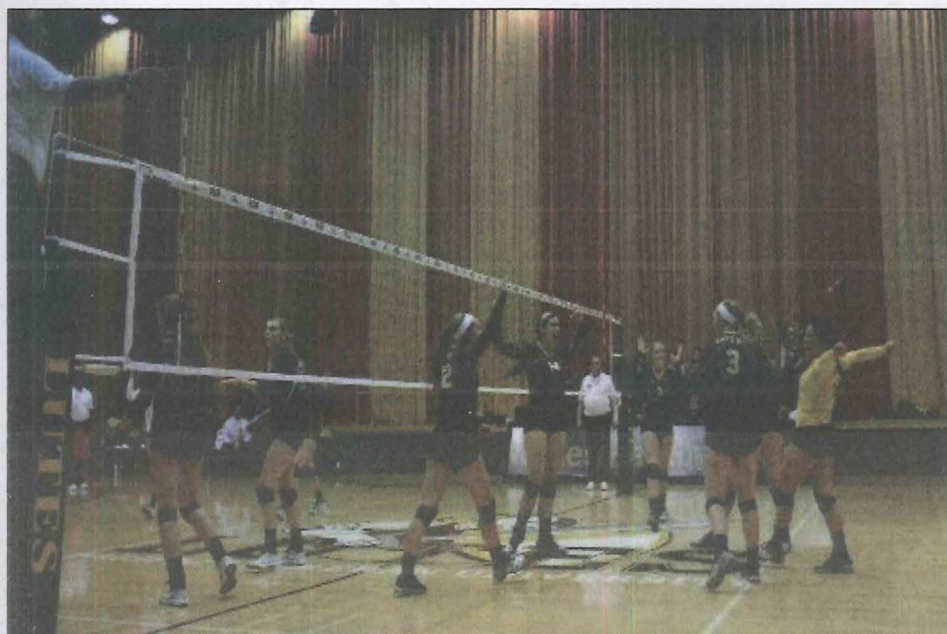


PHOTO COURTESY OF ATHLETICS COMMUNICATIONS

PLU players Kylai Cooley (12), Gabrielle Alley (5), Lauren McClung (14), Lucy Capron (3) and Amber Aguiar (yellow) celebrate after scoring a point against Whitworth. The Lutes went up 2-0 before losing the third and fourth sets to take the game to a fifth set. PLU outlasted Whitworth and came away with a 3-2 victory at Names Family Court.

By **GIANCARLO SANTORO**  
Sports Editor

Defending Northwest Conference volleyball champions Pacific Lutheran University started their march toward another title by winning their first six preseason games in a row, eventually finishing with a record of 7-2 going into NWC play.

Conference play started off with a bang for the PLU volleyball team, ranked No. 13 in NCAA Division III, after defeating Whitworth in five sets at Names Family Court last Friday.

"I thought the match against Whitworth was great," head coach Kevin Aoki said. "We played pretty well and that

the home crowd was fantastic, especially from the baseball team."

The emotionally charged crowd was in full voice to cheer on the Lutes, who started the match in commanding fashion by taking the first two sets over the Pirates and eventually claiming the win.

"I think it is important for the team to win the opening NWC match because it establishes who we are and what we hope to accomplish this season," junior transfer Kylai Cooley said. "We hold ourselves to a high standard, which involves winning the conference."

Both teams played out a grueling first set that featured 12 tie scores, but the Lutes didn't look back once the score was even at 20-20. After taking five out of the

six final points to win the first set 25-21, PLU jumped out to an early 6-1 score in the second.

The Lutes were in no mood to let Whitworth back into the match, and finished the second set 25-16. Not ready to give up despite the lopsided score, Whitworth fought back to take the third and fourth sets 17-25 and 22-25 to ensure a grand finale in the fifth and final set.

With Whitworth riding a wave of confidence, the Pirates did their best to silence the boisterous crowd by pulling out a quick 4-6 lead over the Lutes. PLU would not be denied, though, and rallied to win the set 15-12 and the match 3-2.

"In volleyball, like any other sport, it is important to be focused and checked in every play," Cooley said. "I thought the team did a fantastic job bouncing back and forgetting their mistakes in the fifth set after a rocky start to come away with the win."

Aoki echoed Cooley's analysis of the match.

"We came back after losing sets three and four, to win set five, and that says something about the team," Aoki said. "I thought we passed, served and set pretty well, but we need to improve our overall hitting percentage."

Senior libero Amber Aguiar finished the match with 41 out of 112 digs for the Lutes compared to 30 digs for Whitworth's Maddye Dinsmore. PLU senior Samantha North notched 45 assists on the night while Cooley, first-year Gabrielle Alley and junior Lucy Capron tallied 13 kills each.

PLU's record improved to 8-2 overall and 1-0 in NWC. Whitworth dropped to 7-3 overall, 0-1 in conference.

## STAT SHEET

The Women's Volleyball team has finished in the top two of the Northwest Conference every year since 2006 and has been crowned champions five times since then. The Lutes are going for their third straight title in 2014.

Statistics courtesy of <http://www.nwcsports.com/sports/wvball/archive>

# Volleyball sweeps Whitman, goes 2-0 on weekend

## Lutes now ranked #13 in NCAA

By **DEBRAH CABANOS**  
Sports Writer

Olsen Auditorium was full of activity as the Pacific Lutheran University Women's Volleyball team hosted the first two home Northwest Conference matches last weekend.

The Lute volleyball team, previous conference champions, won both of their matches.

The 18-woman team, comprised of six first-years, two sophomores, five juniors and five seniors, fought a tough battle against Whitworth University.

"Based off of the preseason records, Whitworth seems to be our best competition," said Samantha North, senior captain and setter.

The game could have gone either way, with the Lutes winning the first two sets and the Pirates winning sets three and four. PLU kept fighting during set five, which led to a well-deserved victory.

"Coach reminded (us) that competition like that is why we play the game," junior middle blocker Michaela Edgers said.

"A win against a good team like Whitworth can only help our confidence," head coach Kevin Aoki said. "The team knows that we will get everyone's best shot."

The following day, the volleyball team returned to play a game against Whitman University.

The girls came out strong and energetic for match No. 2 and swept the floor by winning all three sets: 25-18, 25-15 and 25-17.

"We did very well when it came to serving, serve receive passing, and defense," senior outside hitter Ariana Judson said. "Without a strong back row, a team cannot do as much offensively."

Once again, the Lutes played in front of an enthusiastic student section.

"While playing, we were definitely feeding off the crowd's energy," said senior Amber Aguiar, senior captain and libero. "Seeing our student section being so involved and supportive contributed to our win for sure."

Students also commented about how much fun they had supporting their fellow Lutes this weekend.

"Throughout the duration of the game, our student section was really pumped up and loud," first-year Jacob Bockelie said. "Our whole baseball team went out to support them to set the standards for the rest of the games."

The team has set their goals high by striving to win the conference title and advance to postseason.

"We believe that you can only reach your one team goal if you set daily and weekly goals for yourself and individually as a team," junior outside hitter Kylai Cooley said. "We would eventually love to go to nationals but it is going to take us doing little things daily to win conference games, (and) then to win the NWC."

With two wins last weekend, the volleyball team improved to 9-2 overall and 2-0 in NWC. Whitman fell to 5-6 overall and 1-1 in conference.

The Lutes travel to Oregon this weekend to match up against George Fox and Linfield. Their next home game is at 7 p.m. on Oct. 10 at Names Family Court.

"Seeing our student section being so involved and supportive contributed to our win for sure."

**Amber Aguiar**  
Senior libero



PHOTO COURTESY OF ATHLETICS COMMUNICATIONS

Junior Lucy Capron (3) led the Lute offense with 13 kills.

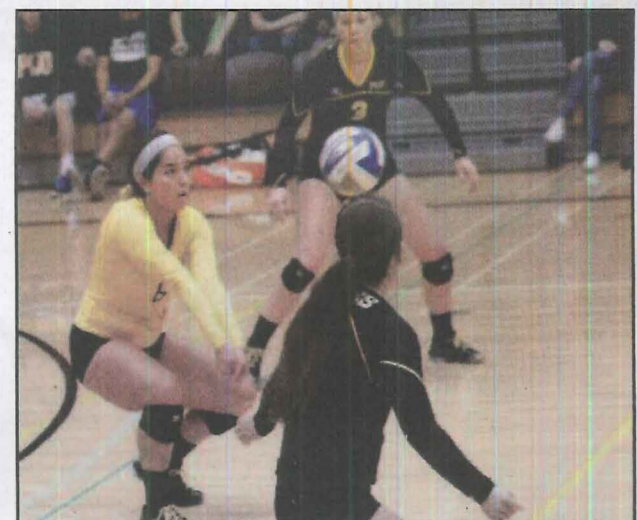


PHOTO COURTESY OF ATHLETICS COMMUNICATIONS

PLU's Amber Aguiar (6) prepares to set up a teammate. Aguiar came away from the weekend with 62 digs in two games.